



## Draycott Place, SW3

£550,000

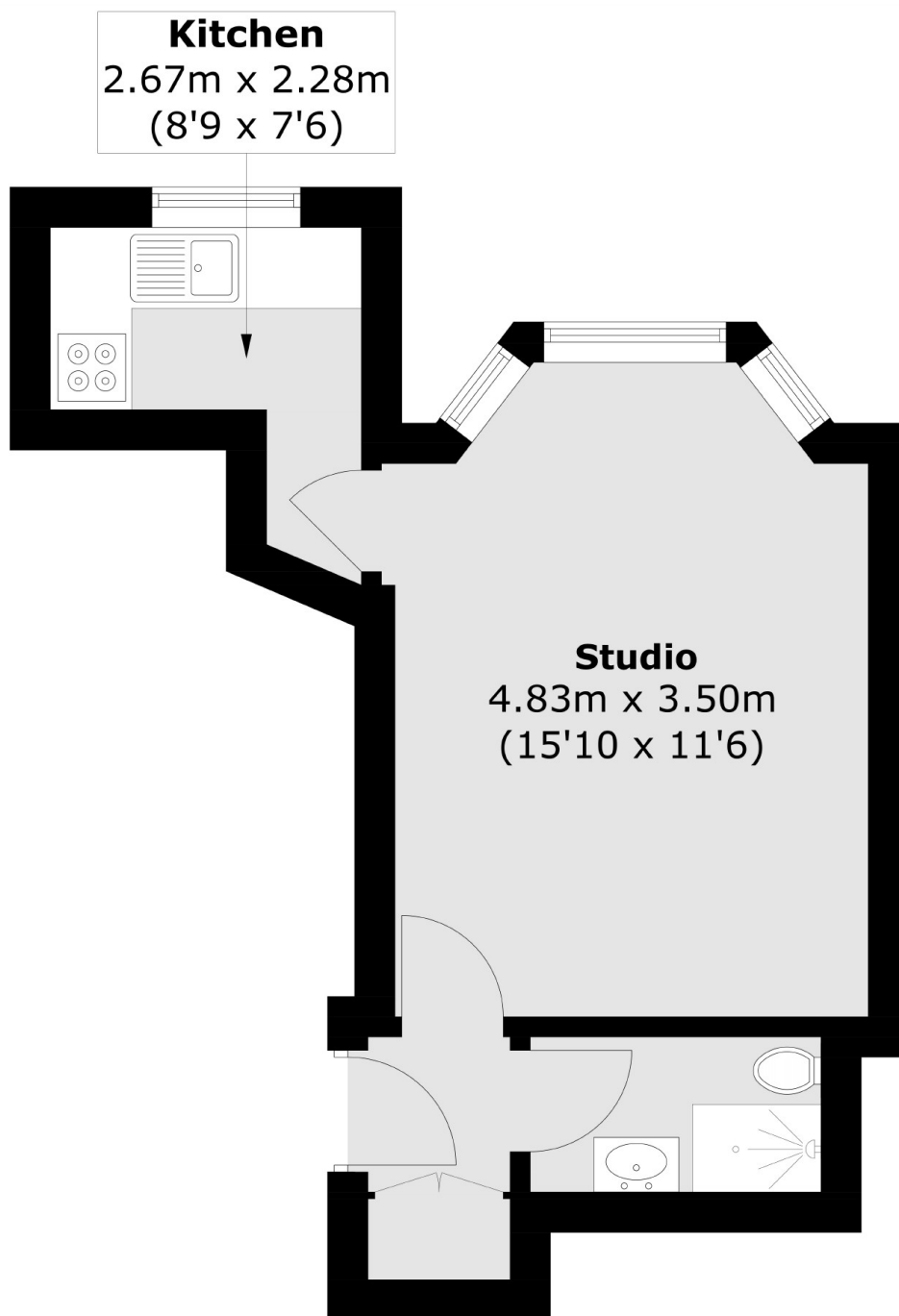
A beautifully refurbished apartment located on the raised ground floor of a handsome building. This property would be ideal as a long term investment or London pied-à-terre.

Draycott Place runs parallel to the King's Road which is home to plenty of boutique shops and restaurants. Duke of York Square, Burton Court and South Kensington tube station are all within walking distance.

### Features

- Share Of Freehold
- High Ceilings
- Raised Ground Floor
- Excellent Condition
- Ideal Investment
- Popular Location

# Draycott Place, London, SW3



## Raised Ground Floor

Total area (approx.): 25.2 sq. m (271.2 sq. ft)

**Dexters**

Chelsea and Belgravia  
45 Sloane Avenue  
London  
SW3 3DH  
Sales  
020 7590 9510

Energy Rating: E. We aim to make our particulars both accurate and reliable. However they are not guaranteed; nor do they form part of an offer or contract. If you require clarification on any points then please contact us, especially if you're traveling some distance to view. Please note that appliances and heating systems have not been tested and therefore no warranties can be given as to their good working order.

 **RICS** | Regulated  
Estate Agent  
and Letting Agent

[dexters.co.uk](http://dexters.co.uk)