



## Edith Grove, SW10

£600 Per week

A well proportioned two bedroom flat in a stucco fronted Victorian house just off Kings Road and close to Chelsea Embankment. Perfect for a single professional or couple looking to be in the heart of all the action that Chelsea has to offer!

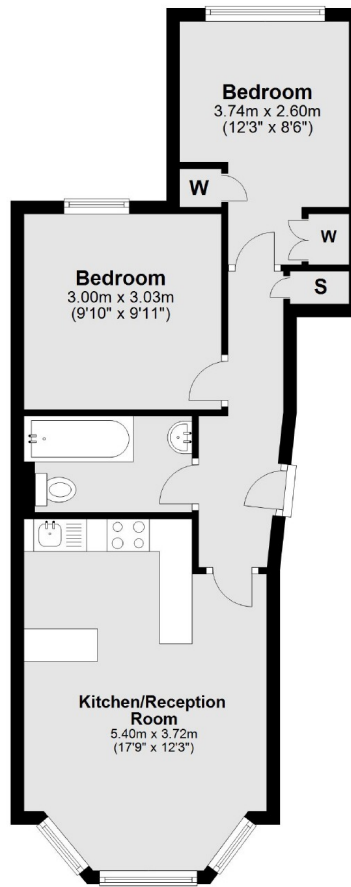
Close to a variety of shops on Kings Road. There is a 24 hour Tesco in Earls Court and Sloane Square is within easy reach with an array of cafes and restaurants including The Chelsea Brasserie and The Aural café.

### Features

- Two Bedrooms
- Raised Ground Floor
- Wood Flooring
- Fitted Wardrobes
- Open Plan Kitchen
- Period Building

# Edith Grove, London, SW10

## Raised Ground Floor



Total area: approx. 46.5 sq. metres (500.8 sq. feet)