



Franklins Row, SW3

£831 Per week

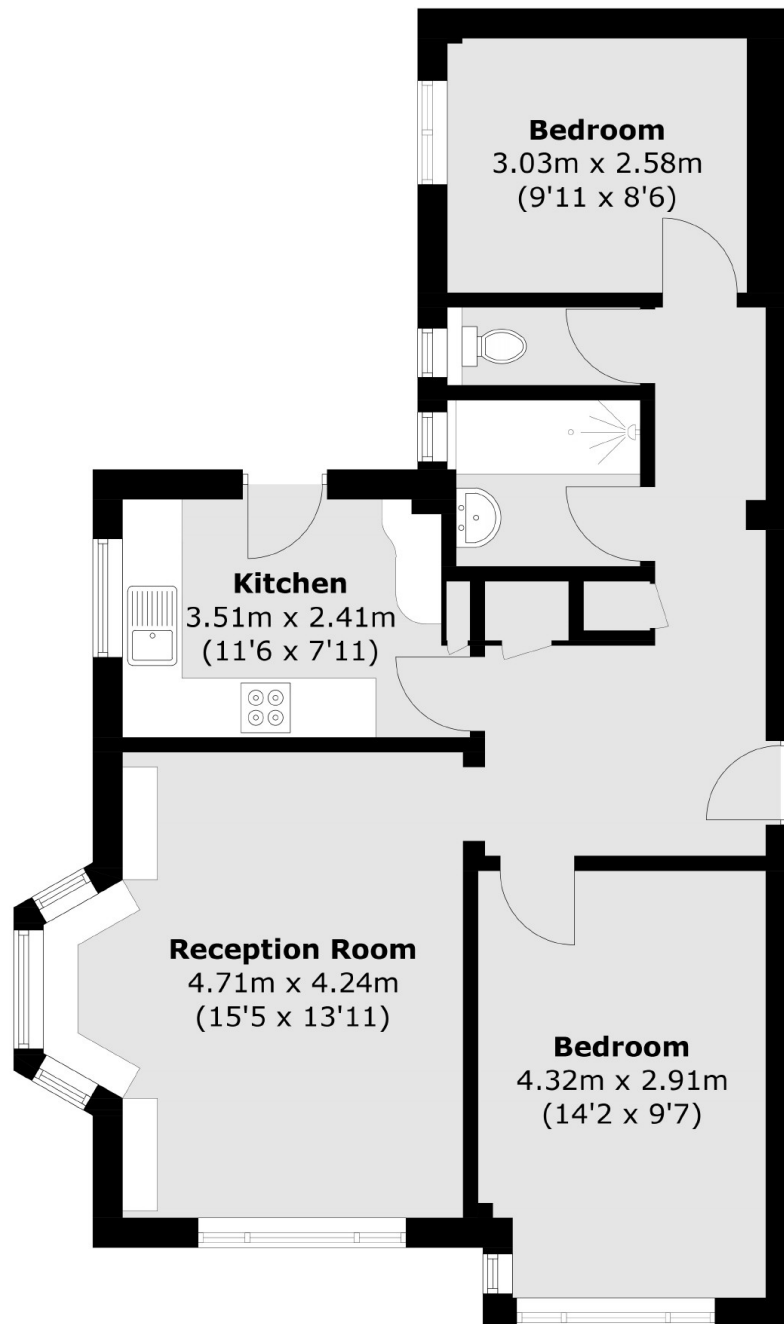
A two double bedroom apartment to let in a prestigious portered block in the heart of Chelsea overlooking Burton Court. The property has been refurbished by the current owners to exacting standards.

Burton Court is located just moments from the shops and restaurants of Kings Road, Sloane Street and Duke of York Square. The property is moments away from Sloane Square Underground.

Features

- Two Bedroom
- Newly Refurbished
- Porter
- Lift
- Attractive Location
- Separate Kitchen

Franklins Row, London, SW3



Ground Floor

Total area (approx.): 66.0 sq. m (710.4 sq. ft)