



Culford Gardens, SW3

£795,000

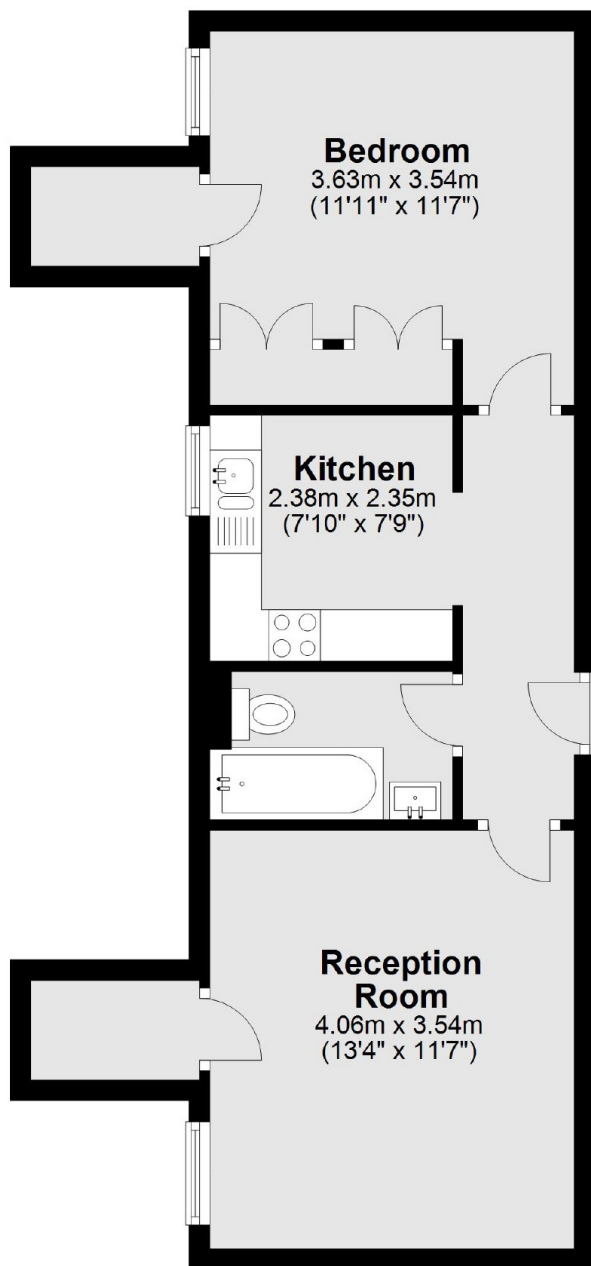
A charming one bedroom apartment within a handsome, portered building. This property has lovely views over Chelsea's rooftops and would work excellently as a London base.

Tennyson House is located on Culford Gardens, which is a very quiet one-way street moments from Pavilion Road, Duke of York Square, the Kings' Road and Sloane Square tube station.

Features

- Porter
- Rooftop Views
- Lift
- Long Leasehold
- One Bedroom
- Good Condition

Culford Gardens, London, SW3



Fourth Floor

Total area: approx. 45.1 sq. metres (485.5 sq. feet)