



Franklins Row, SW3

£1,096 Per week

A two double bedroom apartment to let in a prestigious portered block in the heart of Chelsea overlooking Burton Court. The property has been finished to a very high standard making it the perfect property for a professional couple or sharers looking to live the high life in Chelsea.

Burton Court is located just moments from the shops and restaurants of Kings Road, Sloane Street and Duke of York Square. The property is moments away from Sloane Square Underground.

Features

- Two Double Bedrooms
- One Bathroom
- Immaculate Refurbishment
- Ground Floor
- Onsite Porter
- Quality Fixtures and Fittings



Franklins Row, SW3

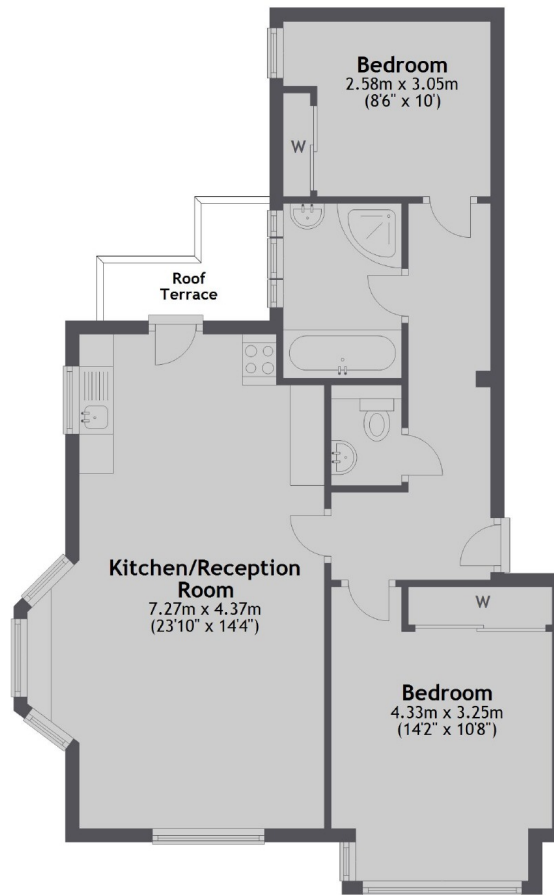
Upon entering the property on the raised ground floor is a spacious living room with wood floors, high ceilings, bay windows overlooking Burton Court and a dining area. The kitchen is open plan with all modern integrated appliances and has a door opening out onto a Juliet Balcony.

Further down the hall are two double bedrooms. The master bedroom has views overlooking the park and built in storage. The second bedroom is towards the rear of the flat with good storage too. There is a spacious bathroom with a walk in shower.



Franklins Row, London, SW3

Ground Floor



Total area: approx. 62.7 sq. metres (675.4 sq. feet)