



Richards Place, SW3

£1,250,000

A newly built one bedroom house in the heart of Chelsea. Designed and finished to the highest of standards, this rarely available property is truly unique.

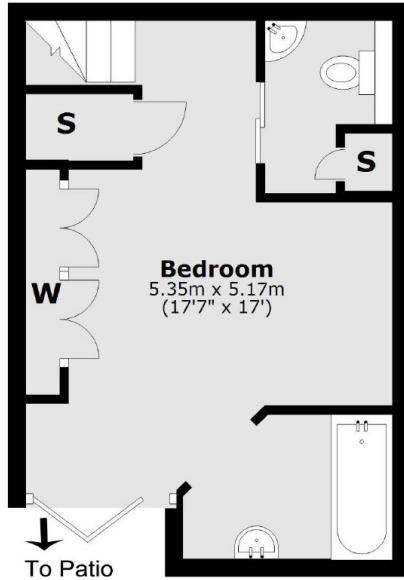
Richards Place is a pretty residential street located in between South Kensington and Sloane Square tube stations. The boutique shops and famous restaurants located on Walton Street are moments away.

Features

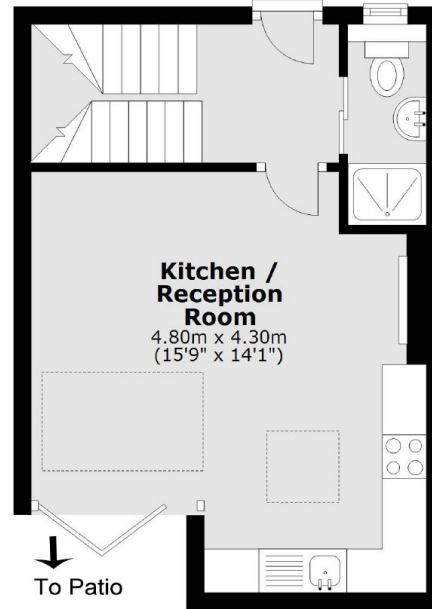
- Freehold House
- Patio
- One Bedroom
- Separate Study
- Excellent Condition
- Popular Location

Richards Place, London, SW3

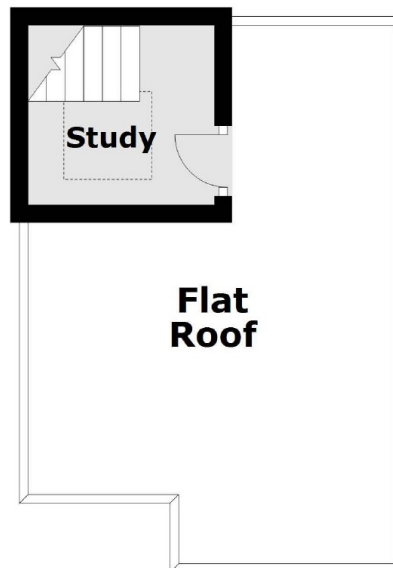
Lower Ground Floor



Ground Floor



First Floor



Total area: approx. 55.6 sq. metres (598.0 sq. feet)