



## Walton Street, SW3

£1,100,000

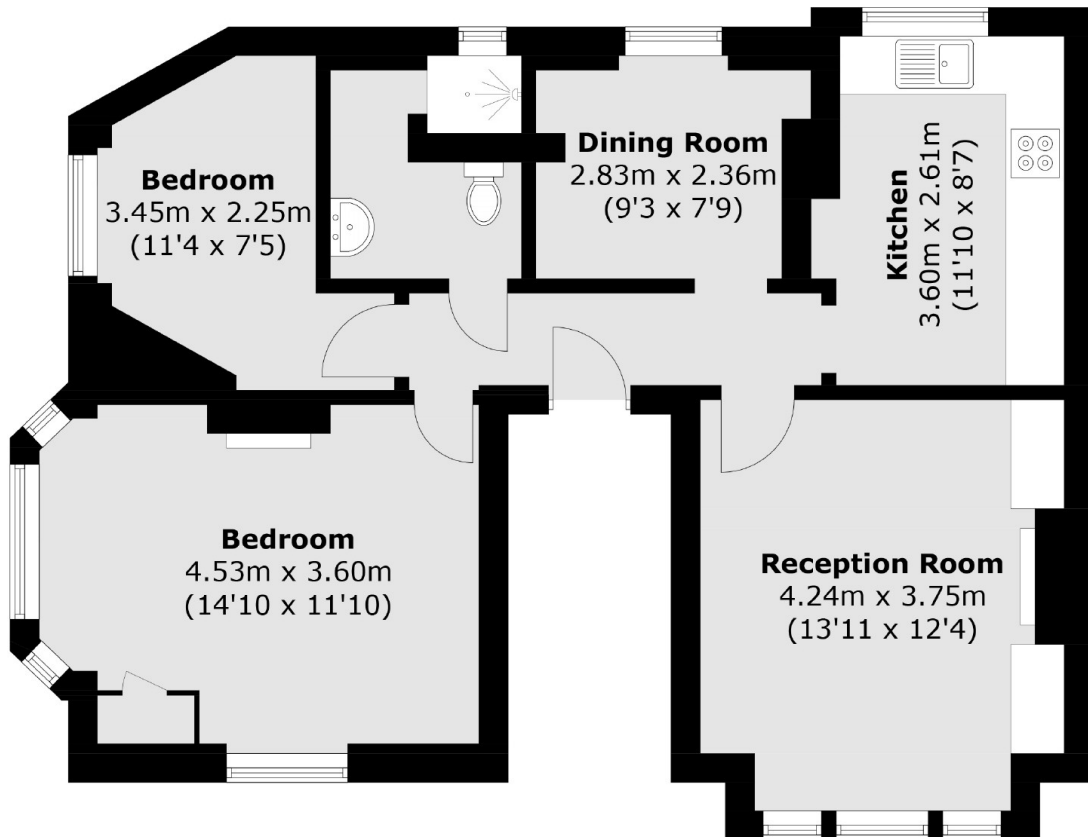
A fantastic two bedroom apartment located on the first floor within a secure, gated development. This property is filled with natural light and benefits from a share of the freehold.

The Marlborough is a sought after, gated development on the border of Chelsea and Knightsbridge, ideally located for all that the local area has to offer.

### Features

- Share Of Freehold
- First Floor
- Two Bedrooms
- Porter
- Gated Development
- Ideal Pied à Terre

# Walton Street, London, SW3



## First Floor

Total area (approx.): 66.1 sq. m (711.5 sq. ft)