



Draycott Place, SW3

£875,000

A beautifully designed one bedroom apartment with access to private gardens and a long lease. This property has high ceilings, a utility room and is approached through smart communal areas.

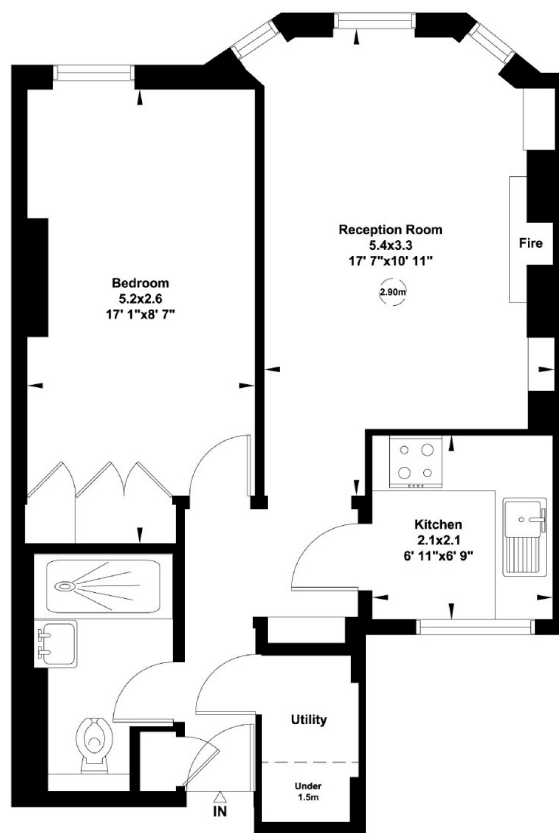
Draycott Place runs parallel to the Kings Road which is home to plenty of boutique shops and restaurants. Sloane Square and South Kensington tube station are both within walking distance.

Features

- One Bedroom
- Long Leasehold
- Separate Utility Room
- High Ceilings
- Beautifully Interior Designed
- Access To Communal Gardens

Draycott Place, London, SW3

Gross internal area (approx.)
46 Sq m (497 Sq ft)
For identification only, Not to Scale



Second Floor