



## Sprimont Place, SW3

£2,150,000

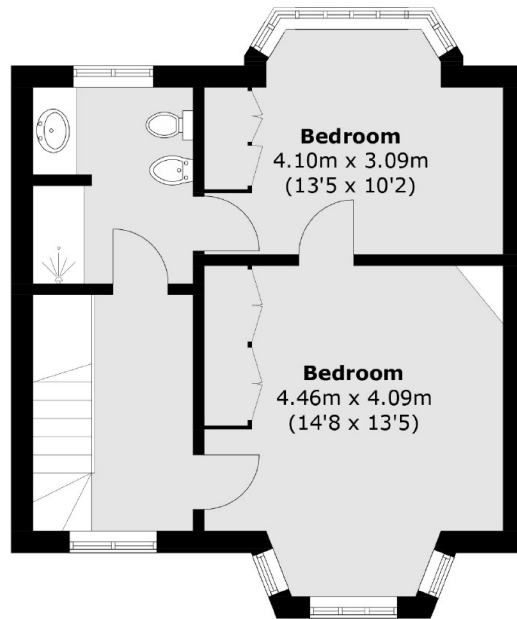
A charming freehold house within The Gateways which is a Grade II listed development. This property has two bedrooms, direct access to a communal courtyard and is in good condition throughout.

The Gateways (built in 1934) is a well-regarded Grade II listed development, moments from Chelsea Green, Sloane Square and Pavilion Road.

### Features

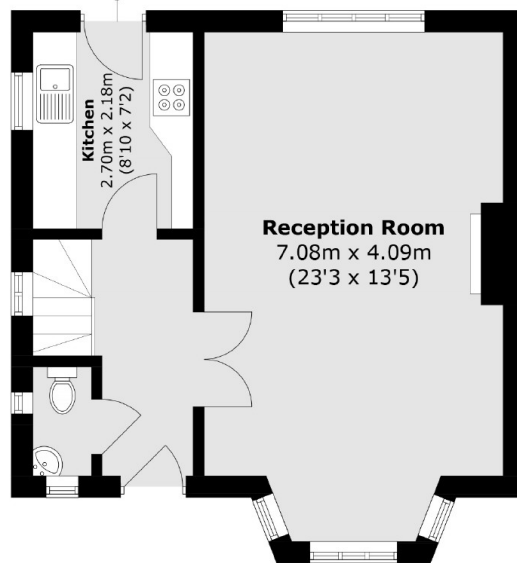
- Rarely Available
- Freehold
- Communal Courtyard
- Good Condition
- Private Development
- Grade II Listed

# Sprimont Place, London, SW3



**First Floor**

To Communal Courtyard



**Ground Floor**

Total area (approx.): 84.5 sq. m (909.5 sq. ft)