

Culford Gardens, SW3

£865 Per week

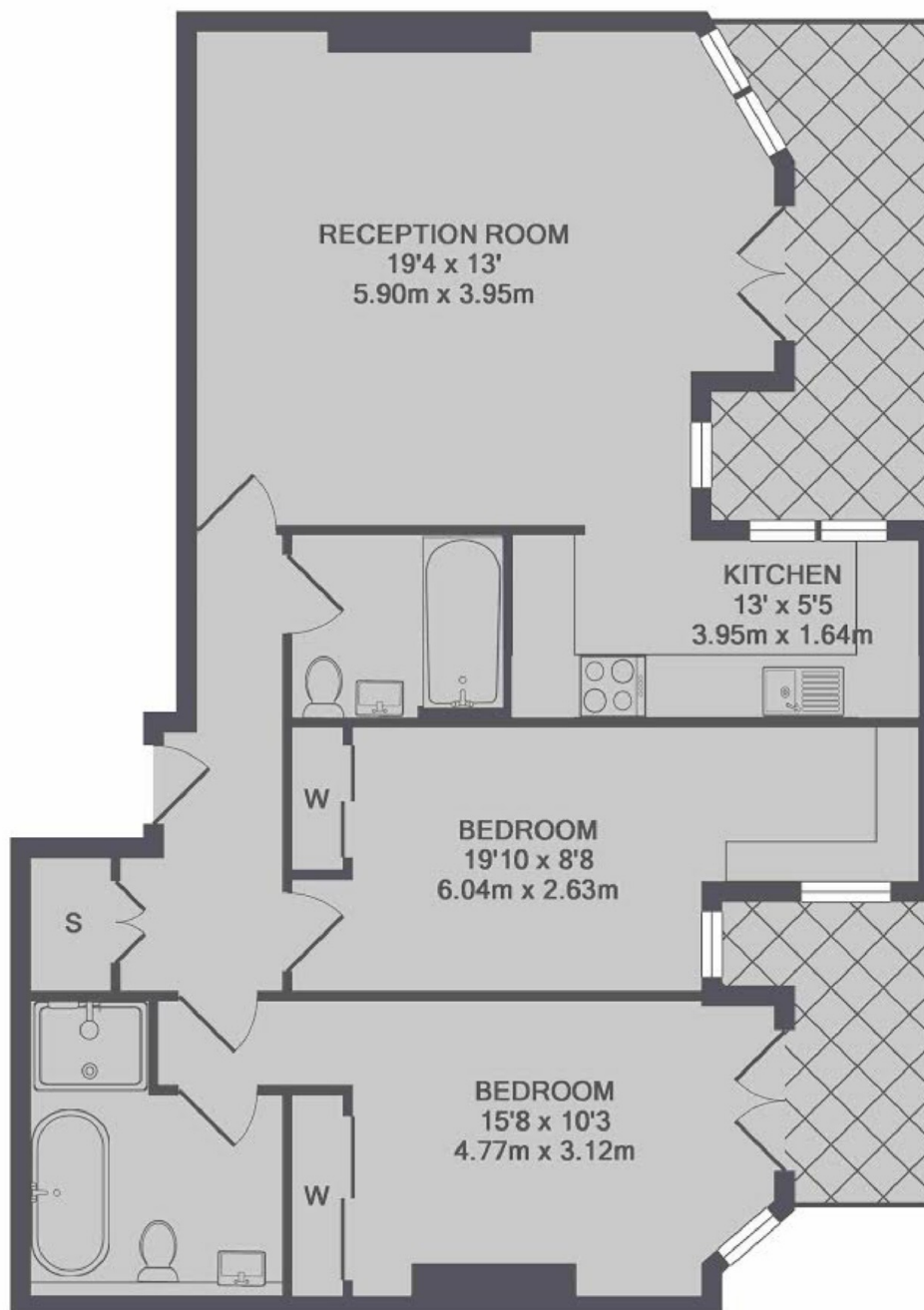
A two double bedroom property moments from Sloane Square. This flat is wonderfully arranged with plenty of light, a private patio and a residential porter.

Culford Gardens is a quiet one-way street parallel to the Kings Road. The local amenities and Sloane Square tube station are both within walking distance.

Features

- Porter
- Two Bedrooms
- Private Patio
- Quiet Location
- Excellent Condition
- Wooden floors through-out

Culford Gardens, London, SW3



TOTAL APPROX. FLOOR AREA 857 SQ.FT. (79.6 SQ.M.)

Dexters

Chelsea and Belgravia
45 Sloane Avenue
London
SW3 3DH
Lettings
020 7590 9500

Energy Rating: C. We aim to make our particulars both accurate and reliable. However they are not guaranteed; nor do they form part of an offer or contract. If you require clarification on any points then please contact us, especially if you're traveling some distance to view. Please note that appliances and heating systems have not been tested and therefore no warranties can be given as to their good working order.

 **RICS** | Regulated
Estate Agent
and Letting Agent

dexters.co.uk