



## Park Walk, SW10

£1,475,000

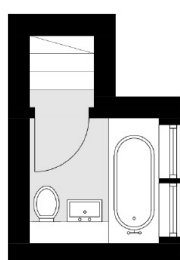
A bright and spacious apartment located on a charming street in Chelsea. The property has two double bedrooms, a separate kitchen and its own private entrance.

Park Walk is a tree-lined street situated between the King's Road and Fulham Road. Moments away is 'The Beach' which is home to delicatessens, restaurants and boutique shops.

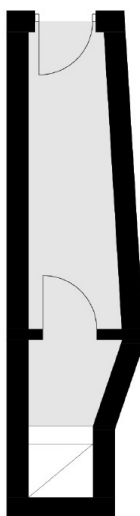
### Features

- Private Entrance
- Two Bedrooms
- First & Second Floor
- Long Leasehold
- Popular Location
- Plenty Of Natural Light

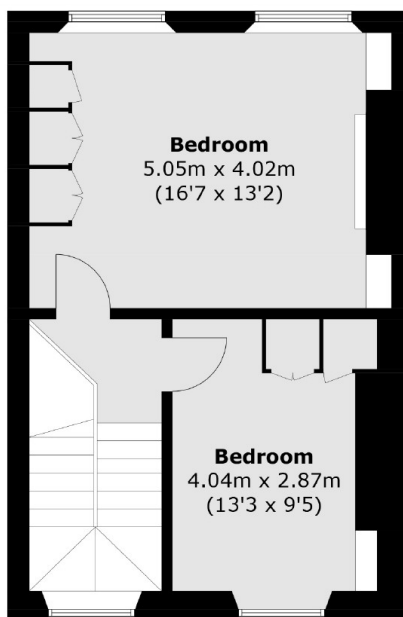
# Park Walk, London, SW10



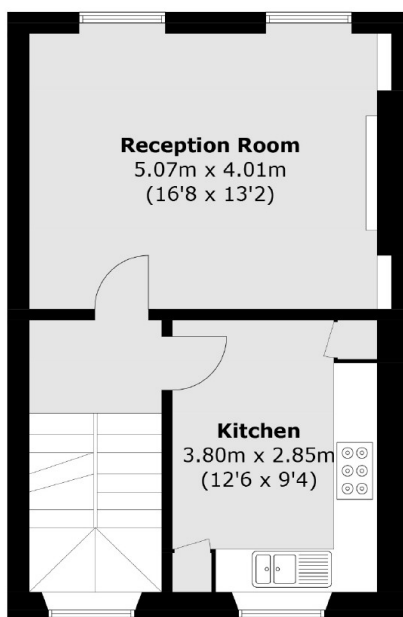
**Half Landing**



**Ground Floor**



**Second Floor**



**First Floor**

Total area (approx.): 89.4 sq. m (962.2 sq. ft)