



Coleridge Gardens, SW10

£850,000

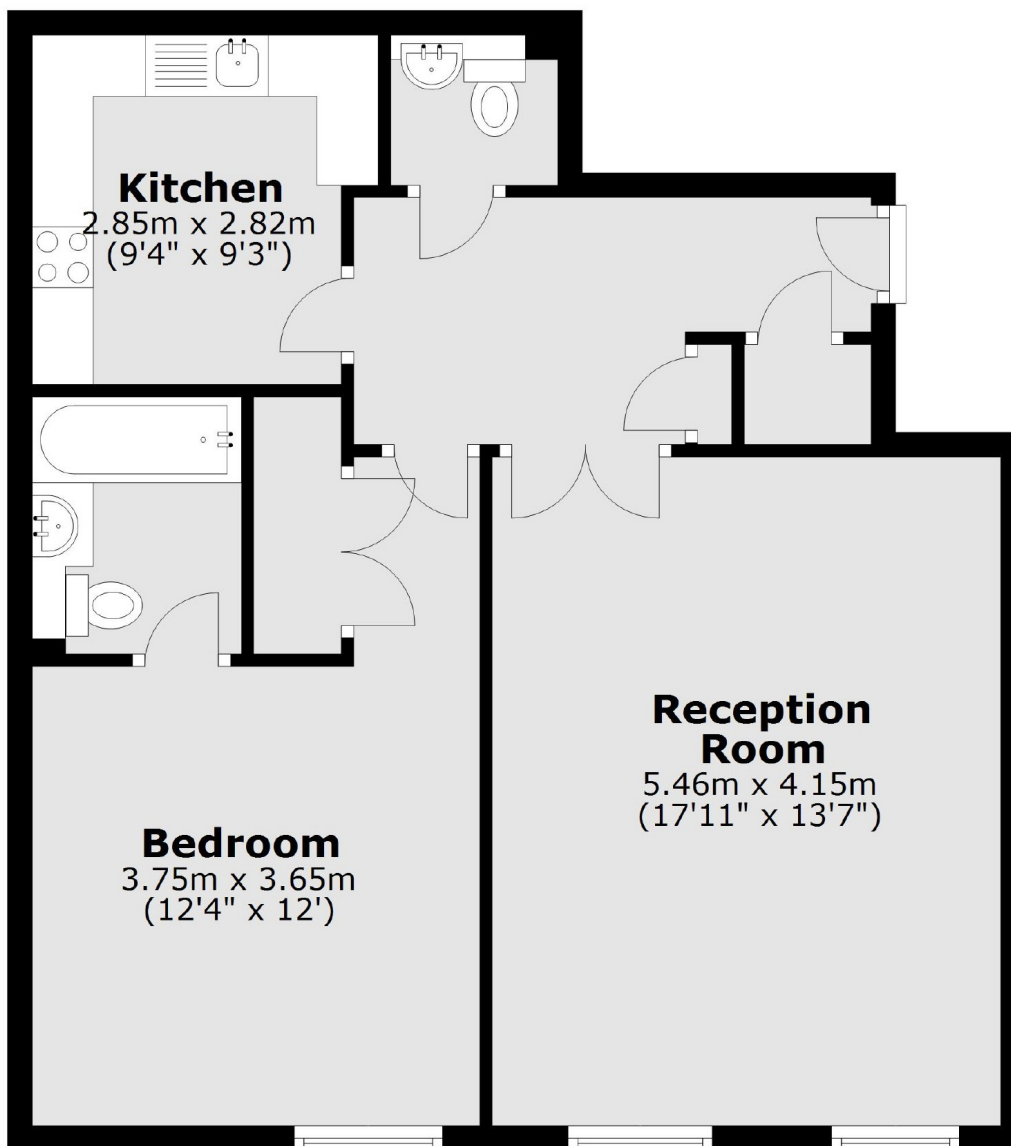
A large one bedroom property measuring nearly 700sqft within an exclusive development in Chelsea. This apartment has excellent proportions, lovely views and a secure parking space.

Coleridge Gardens is a private development boasting a gym, communal gardens and a swimming pool, ideally located between the Kings Road and Fulham Road with shops, transport links and restaurants close by.

Features

- Share Of Freehold
- Tennis Court
- Secure Parking Space
- Gym & Swimming Pool
- Porters
- Gated Development

Coleridge Gardens, London, SW10



Second Floor

Total area: approx. 63.3 sq. metres (681.0 sq. feet)