



## Tedworth Square, SW3

£1,500,000

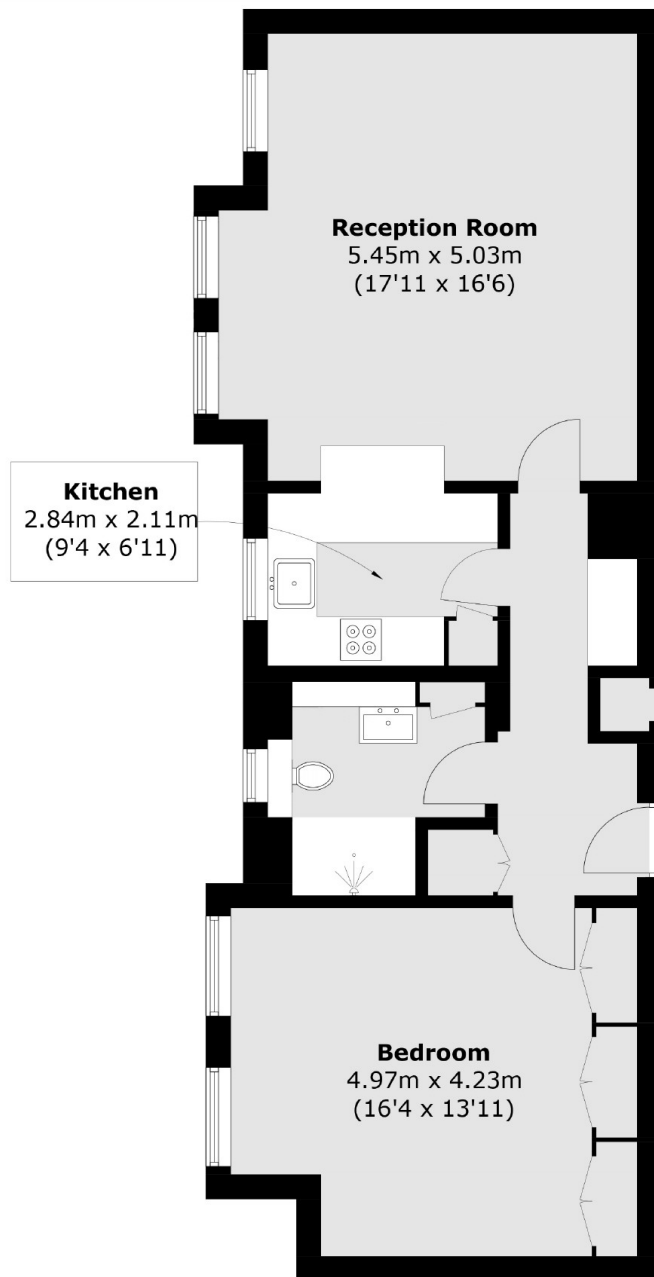
A stunning one bedroom apartment with fantastic views and communal garden access. This property has been completely refurbished to the highest of standards by the current owners.

Tedworth Square is ideally located south of the King's Road. Local boutique shops, famous restaurants and cafés are all within walking distance.

### Features

- Share Of Freehold
- One Bedroom
- Newly Renovated
- Large Reception Room
- Quiet Location
- Access To Communal Gardens

# Tedworth Square, London, SW3



## First Floor

Total area (approx.): 68.9 sq. m (741.6 sq. ft)  
External Storage (approx.): 0.4 sq. m (4.3 sq. ft)