



Sloane Avenue, SW3

£315,000

A studio apartment located on the third floor of a sought after Chelsea Block. This property would work excellently as a pied-à-terre or rental investment.

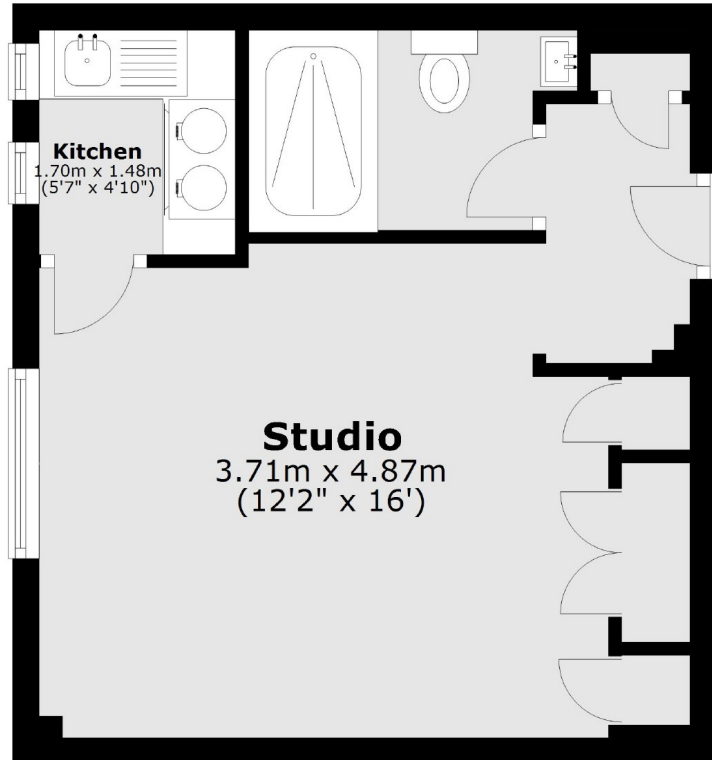
Sloane Avenue Mansions is an attractive Art-Deco block positioned moments from Sloane Square, Chelsea Green, the King's Road and and South Kensington Station.

Features

- Share of Freehold
- Porter
- Lift
- Perfect Pied-à-Terre
- Separate Kitchen
- Art Deco Building

**Sloane Avenue,
London, SW3**

Third Floor



Total area: approx. 26.3 sq. metres (283.0 sq. feet)