



Draycott Place, SW3

£1,153 Per week

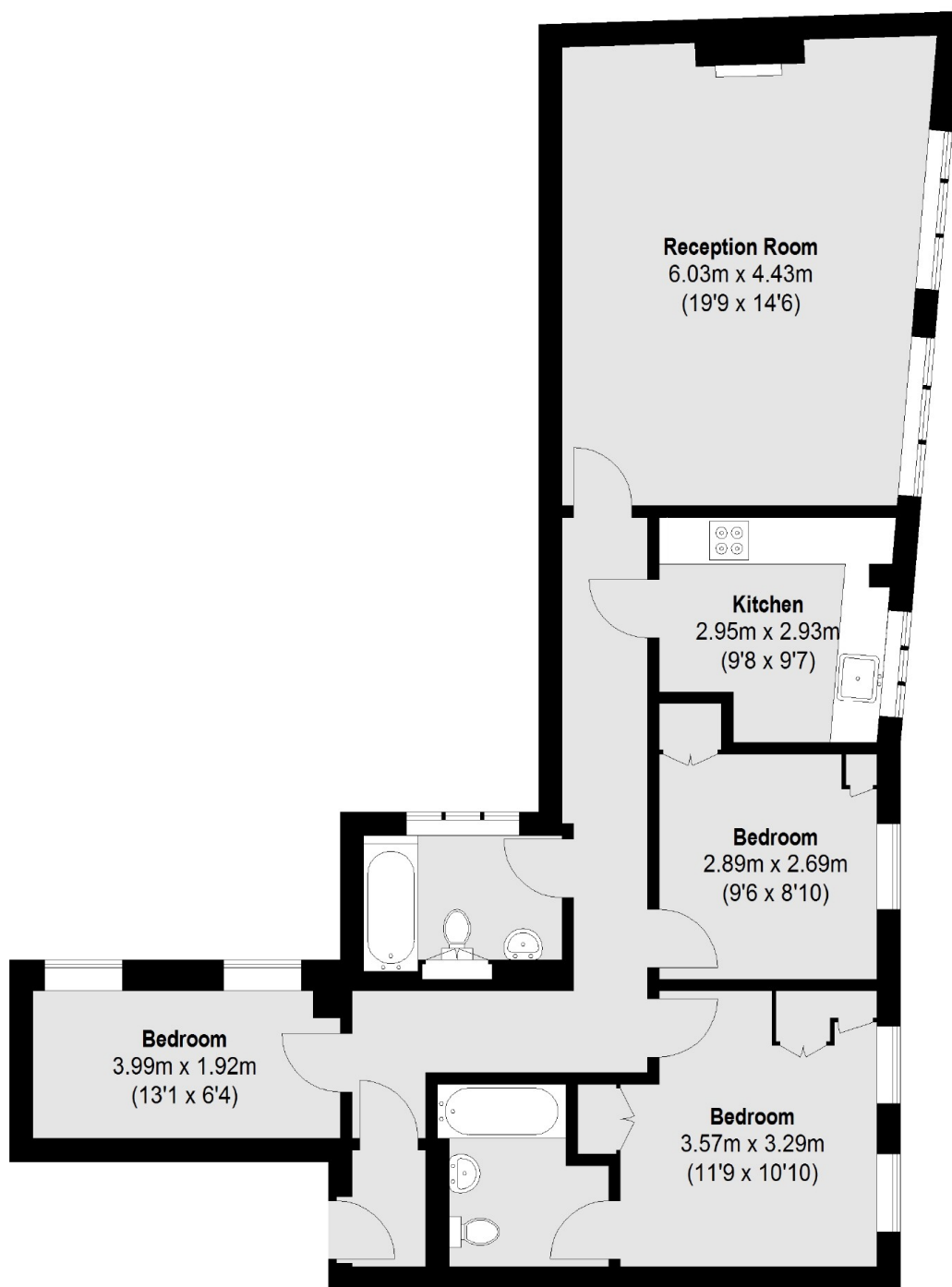
A beautifully presented three bedroom property moments from Sloane Square. The apartment is positioned on the third floor (with lift) and benefits from lovely views as well as plenty of natural light.

Rutland Court is positioned on the corner of Blacklands Terrace and Draycott Place which runs parallel to the Kings Road. Sloane Square and Chelsea Green are both within easy reach.

Features

- Three Bedroom
- Two Bathroom
- Third Floor
- Lift
- Separate Kitchen
- Lovely Views

Draycott Place, London, SW3



Third Floor

Total area (approx.): 89.99 sq. m (969 sq. ft)