



Sloane Avenue, SW3

£595 Per week

Situated on the third floor of a purpose built block on Sloane Avenue with lifts and porters. This recently renovated one bedroom flat benefits from wooden floor throughout with the heating and hot water also being included in the rent.

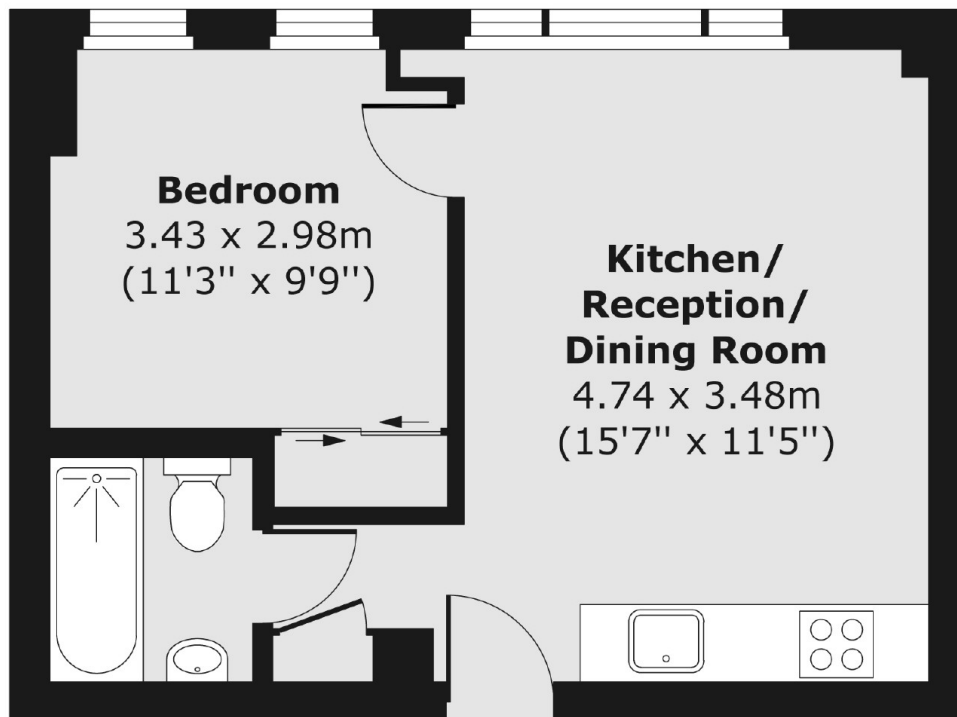
Nell Gwynn House is located between Sloane Square and South Kensington tube stations. The world famous shops and restaurants of the Kings Road are also within walking distance.

Features

- Third Floor
- Lift
- 24 Hour Porter
- Wooden Floors Throughout
- Recently Renovated
- Heating & Hot Water Included

**Sloane Avenue,
London, SW3**

Third Floor



Total area (approx.) 31.19 sq. m (336 sq. ft)