



Lower Sloane Street, SW1W

£600,000

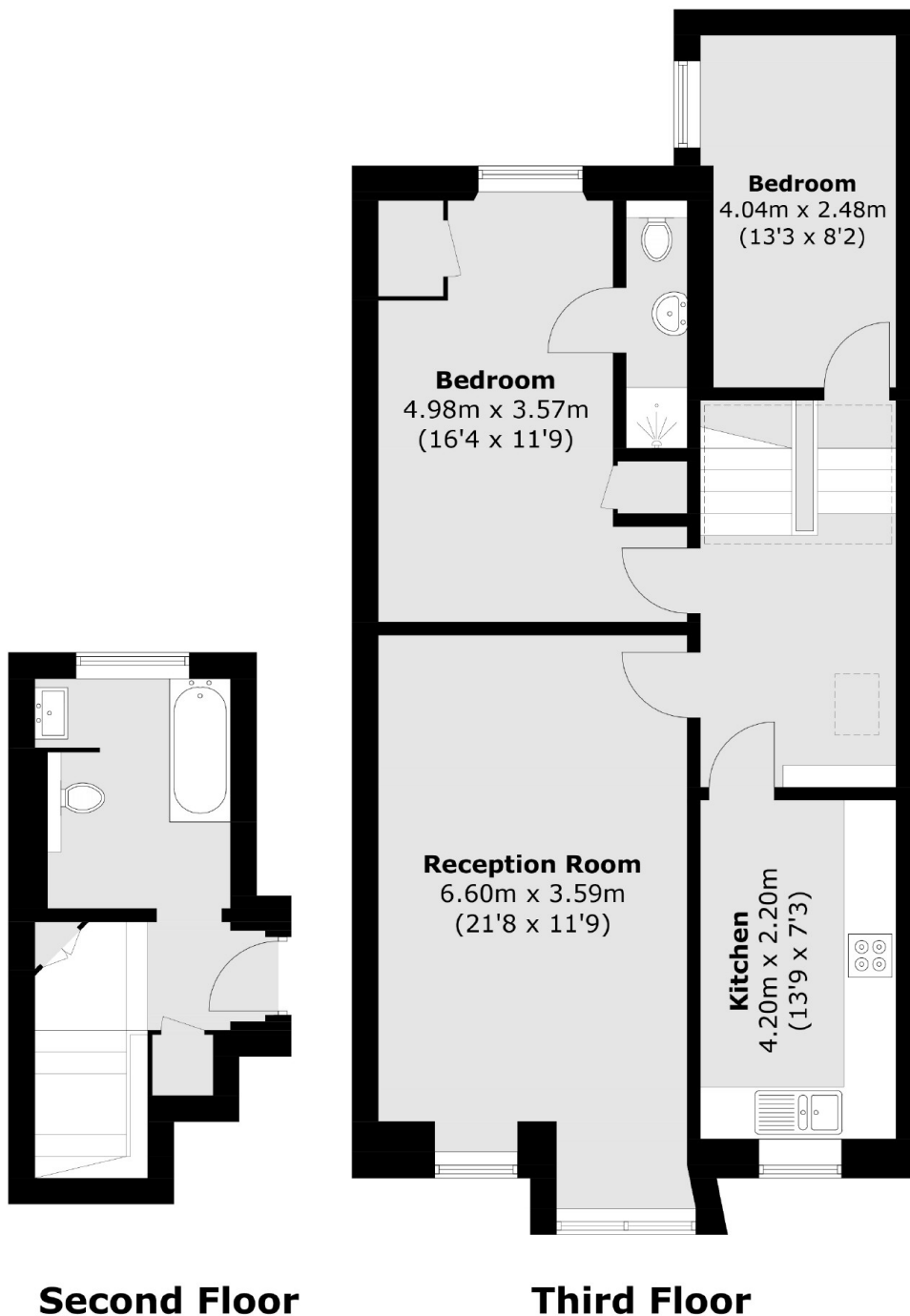
A two bedroom apartment moments from Sloane Square. This split-level property is filled with natural light and would now benefit from being updated.

Lower Sloane Street runs from Sloane Square towards Chelsea Embankment. Burton Court, The King's Road and The Chelsea Physic Garden are moments away.

Features

- Two Bedrooms
- Popular Location
- Separate Kitchen
- Large Reception Room
- Two Bathrooms
- Short Lease (Approximately 20 years remaining)

Lower Sloane Street, London, SW1W



Total area (approx.): 82.8 sq. m (891.2 sq. ft)