



Rosemoor Street, SW3

£695,000

A charming two bedroom flat within a smart apartment block on a quiet street. The property benefits from a spacious living space, an abundance of natural light and access to a south facing patio garden.

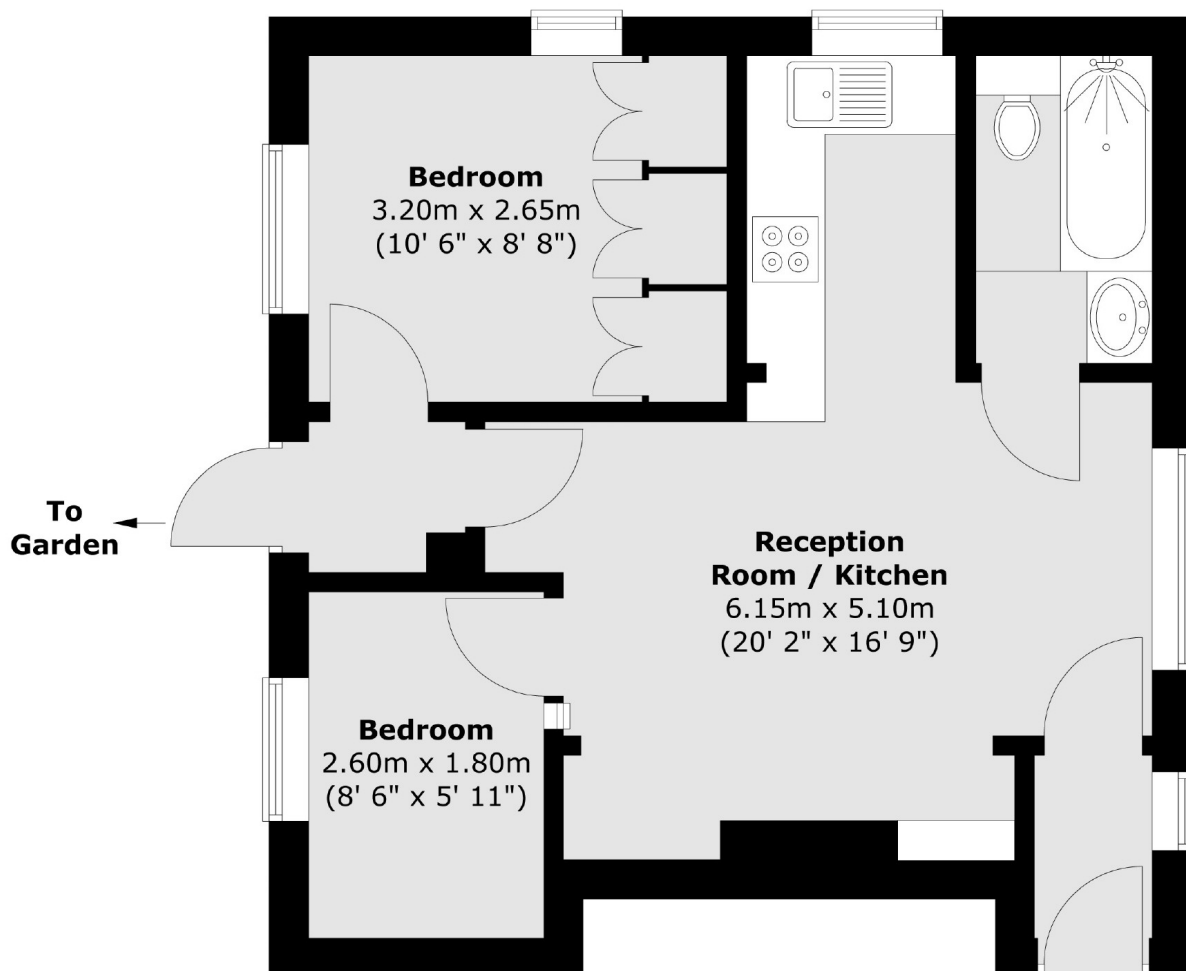
Rosemoor Street is ideally located between Sloane Square and South Kensington tube stations. A number of notable restaurants, cafés and boutique shops are within easy reach.

Features

- Share of Freehold
- One Double Bedroom
- Study
- South Facing Garden
- Popular Location
- Quiet Street

Rosemoor Street, London, SW3

Ground Floor



Total area (approx.) : 41.6 sq. m (448 sq. ft)