



## Waldron Mews, SW3

£3,500,000

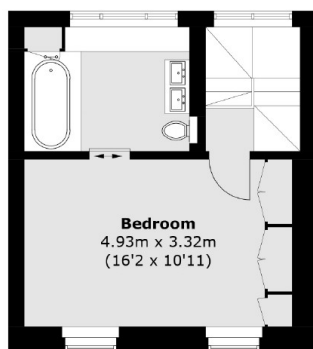
A stunning house that has been refurbished to the highest of standards. This property boasts a garage, three bedrooms, beautiful living spaces, and is set within a secure, gated development.

Waldron house is a small boutique development by Native Land, discreetly located within the quiet confines of Chelsea's oldest street, occupying a unique position.

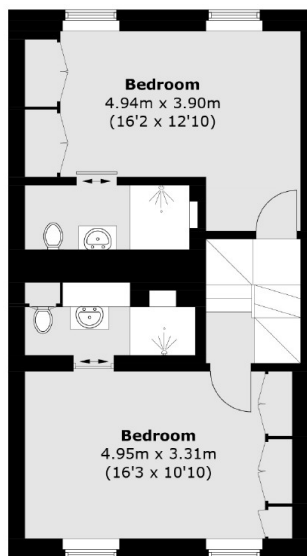
### Features

- Newly Developed
- Garage
- Porter
- Three Bedrooms
- Gated Development
- Communal Courtyard

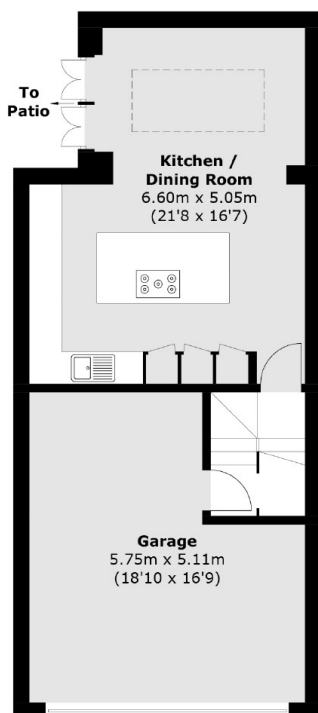
# Waldron Mews, London, SW3



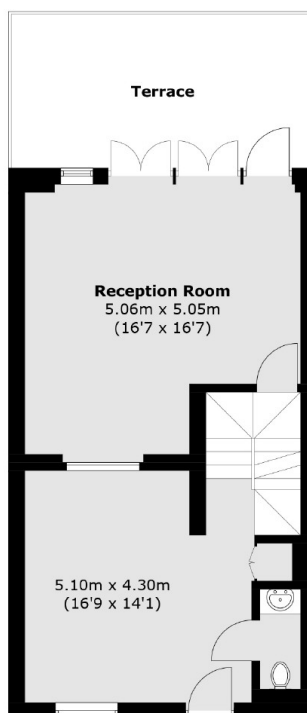
Second Floor



First Floor



Lower Ground Floor



Ground Floor

Total area (approx.): 186.7 sq. m (2009.6 sq. ft)  
Terrace: 15.9 sq. m (171.1 sq. ft)