



Cheltenham Terrace, SW3

£2,650,000

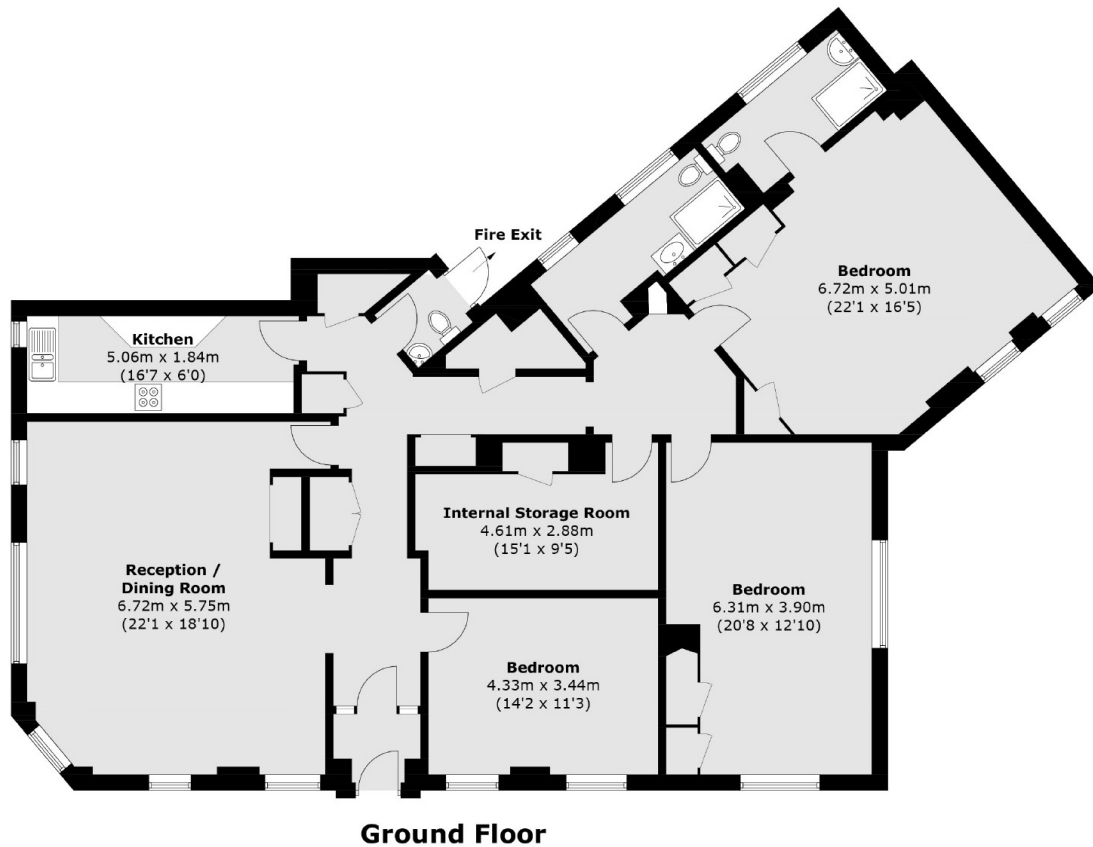
A spacious lateral flat with the unusual benefit of it's own private front door. The property measures close to 2000sqft and benefits from a share of the freehold and portorage.

Whitelands House is ideally located in Chelsea with an array of local shops, restaurants and cafés close by. Sloane Square, Knightsbridge and South Kensington are all within walking distance.

Features

- Share Of Freehold
- Lateral Apartment
- Private Front Door
- Three Bedrooms
- Raised Ground Floor
- Porters

Cheltenham Terrace, London, SW3



Total area (approx.): 177.2 sq. m (1907.4 sq. ft)