

Slaidburn Street, SW10

£1,600,000

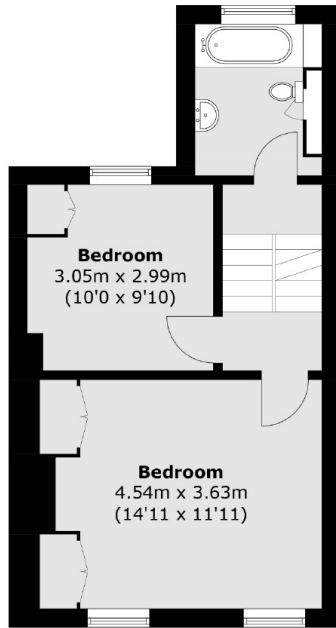
A fantastic house in Chelsea moments from the King's Road. This well-arranged property has four bedrooms, generous entertaining spaces and a superb roof terrace.

Slaidburn Street is a sought-after and quiet cul-de-sac located off the King's Road close to an abundance of boutique shops, cafés and restaurants.

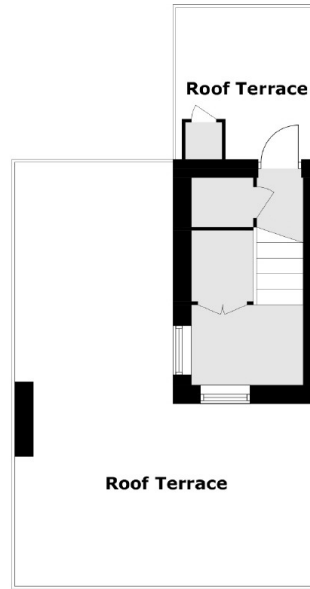
Features

- Roof Terrace
- Freehold
- Four Bedrooms
- Good Condition
- Popular Location
- Two Bathrooms

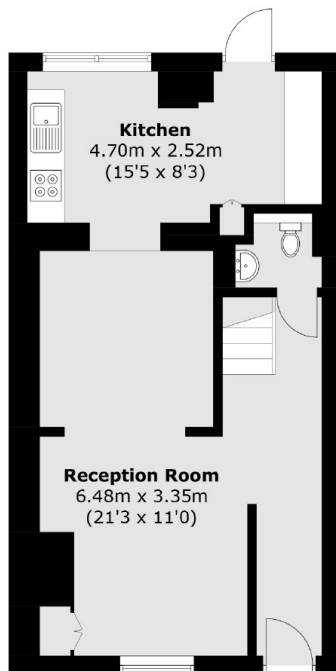
Slaidburn Street, London, SW10



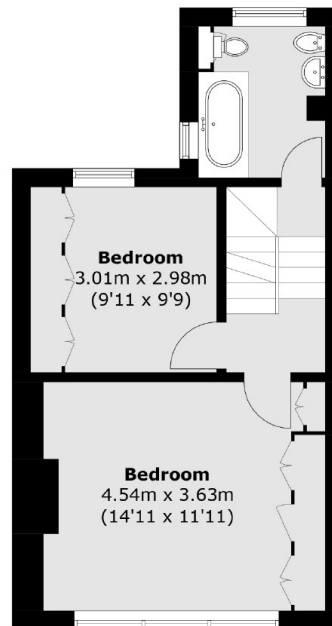
Second Floor



Fourth Floor



Ground Floor



First Floor

Total area (approx.): 124.5 sq. m (1340.0 sq. ft)
Roof Terrace: 29.6 sq. m (318.6 sq. ft)