



## Coleridge Gardens, SW10

£1,250,000

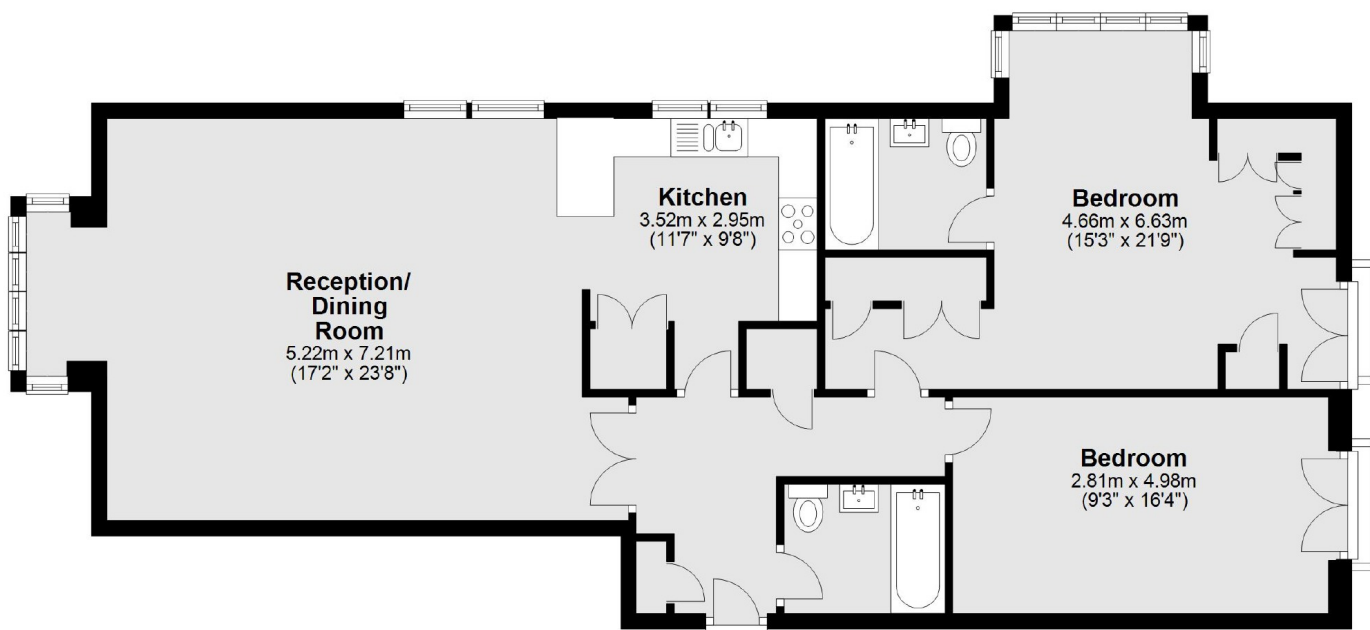
A large two bedroom apartment within a gated development in Chelsea. This property would work perfectly as a rental investment as it is let until August 2024.

Coleridge Gardens is a private development boasting a gym, communal gardens and a swimming pool, ideally located between the Kings Road and Fulham Road with shops, transport links and restaurants close by.

### Features

- Share Of Freehold
- Two Bedrooms
- Porters
- Second Floor
- Secure Parking Space
- Gym & Swimming Pool

# Coleridge Gardens, London, SW10



Total area: approx. 99.2 sq. metres (1067.7 sq. feet)

**Dexters**

Chelsea and Belgravia  
45 Sloane Avenue  
London  
SW3 3DH  
Sales  
020 7590 9510

Energy Rating: C. We aim to make our particulars both accurate and reliable. However they are not guaranteed; nor do they form part of an offer or contract. If you require clarification on any points then please contact us, especially if you're traveling some distance to view. Please note that appliances and heating systems have not been tested and therefore no warranties can be given as to their good working order.

 **RICS** | Regulated  
Estate Agent  
and Letting Agent

[dexters.co.uk](https://www.dexters.co.uk)