



Sloane Gardens, SW1W

£1,185,000

A charming two bedroom apartment ideally located moments from Sloane Square. This two bedroom property has high ceilings, great natural light and is positioned on the second floor of a well-maintained building.

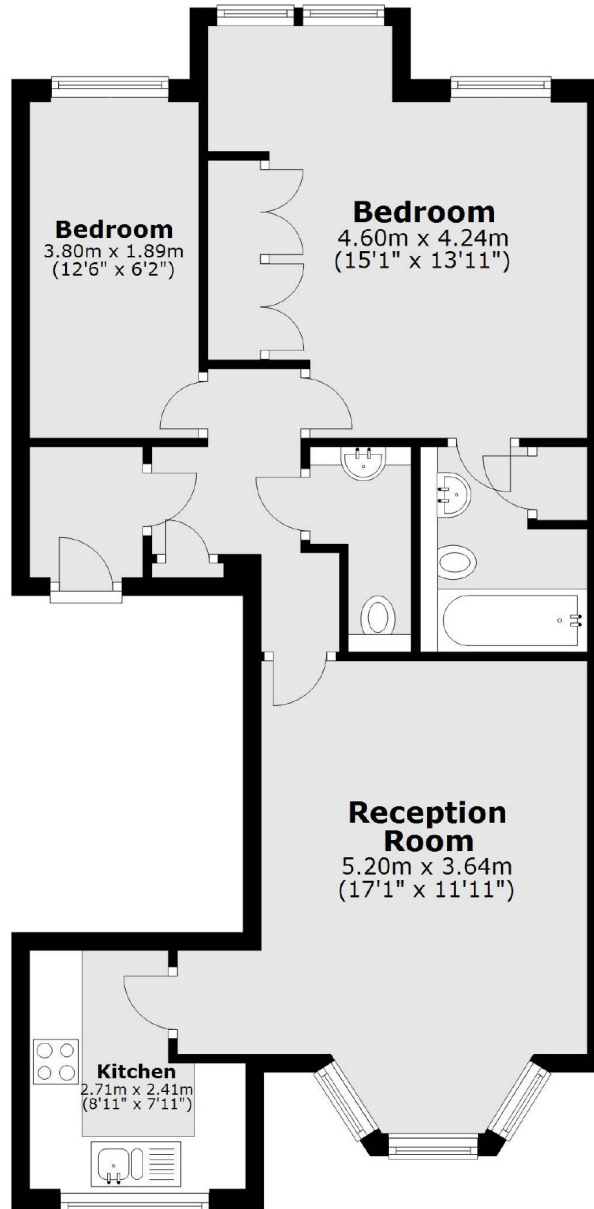
Sloane Gardens is a pretty tree lined street moments from the King's Road and Knightsbridge. Sloane Square and the amenities it has to offer are all within walking distance.

Features

- Two Bedrooms
- High Ceilings
- Good Condition
- One Bathroom
- Ideal Location
- Smart Communal Areas

Sloane Gardens, London, SW1W

Second Floor



Total area: approx. 62.8 sq. metres (675.6 sq. feet)