



Sloane Gardens, SW1W

£2,050,000

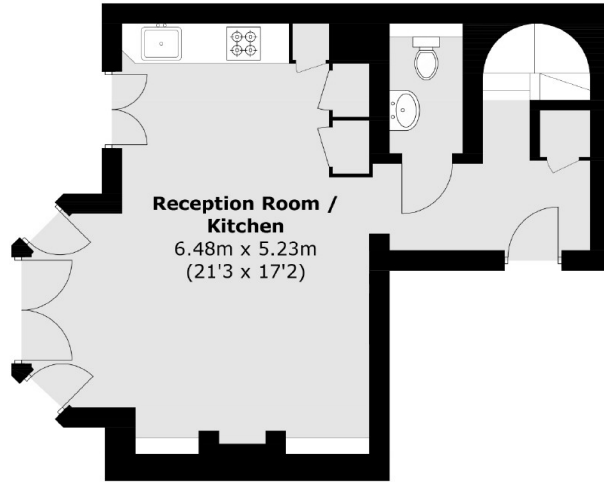
A beautiful apartment with high ceilings, a long lease and access to communal gardens. This building benefits from a resident caretaker and recently refurbished communal areas.

Sloane Gardens is a pretty tree lined street moments from the King's Road and Knightsbridge. Sloane Square and the amenities it has to offer are all within walking distance.

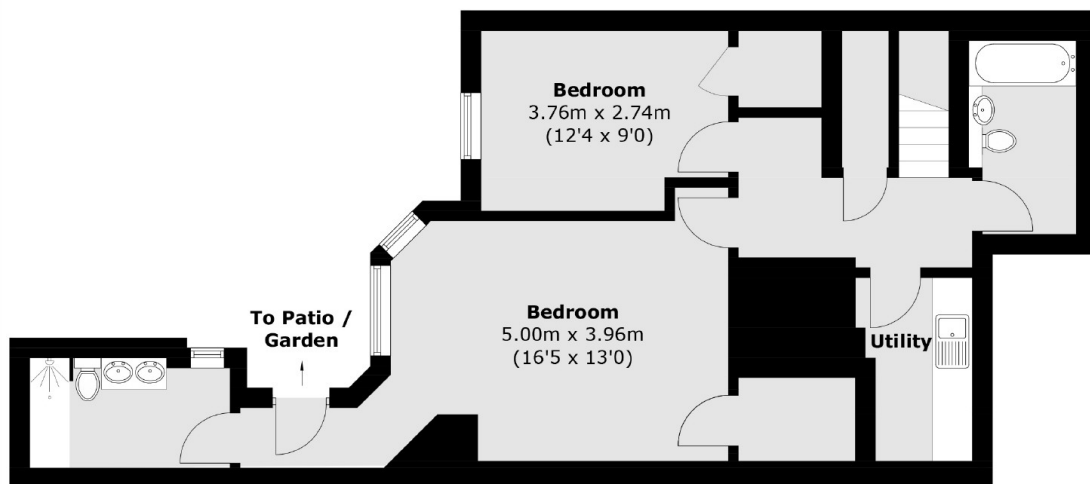
Features

- Caretaker
- Two Bedrooms
- Long Leasehold
- Communal Gardens
- High Ceilings
- Separate Utility Room

Sloane Gardens, London, SW1W



Ground Floor



Lower Ground Floor

Total area (approx.): 103.6 sq. m (1,115.1 sq. ft)