



Coleridge Gardens, SW10

£900 Per week

A beautifully presented two double bedroom flat on the raised ground floor within this sought after gated development which benefits from 24 hour porter, gym, swimming pool, tennis court and landscaped communal gardens.

Coleridge Gardens offers 24 hour portorage, numerous resident only facilities such as gym, pool and tennis courts. Secure underground parking available by separate negotiation.

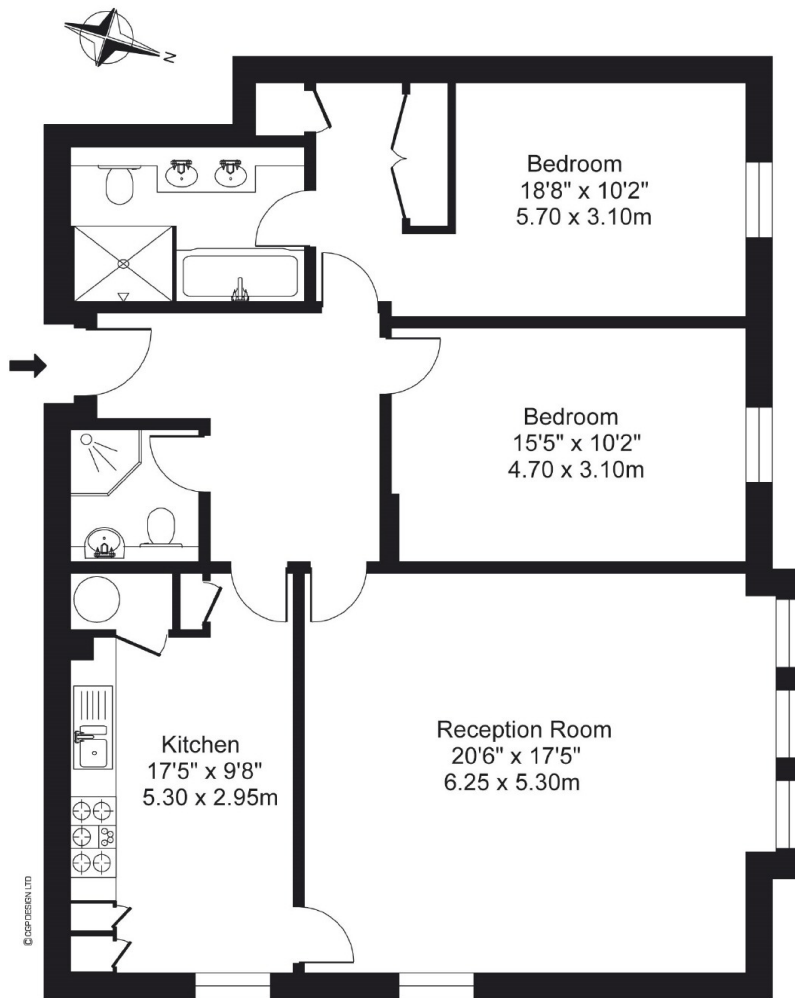
Features

- Two Double Bedrooms
- Wood Floors
- Separate Kitchen
- Two Bathrooms
- Communal Gardens
- Porter

Coleridge Gardens, London, SW10

Chelsea, London SW10

Approximate Gross Internal Floor Area
1122 sq ft / 104.2 sq m



Ground Floor

ILLUSTRATION FOR IDENTIFICATION PURPOSES ONLY

ALL MEASUREMENTS ARE MAXIMUM, AND INCLUDE WINDOW BAYS AND WARDROBES WHERE APPLICABLE
THIS PLAN MUST NOT BE REPRODUCED BY ANY OTHER PERSON WITHOUT PERMISSION.