



Walton Street, SW3

£765,000

A first floor flat within a secure development in Chelsea. This property has great proportions, plenty of natural light and a residential porter.

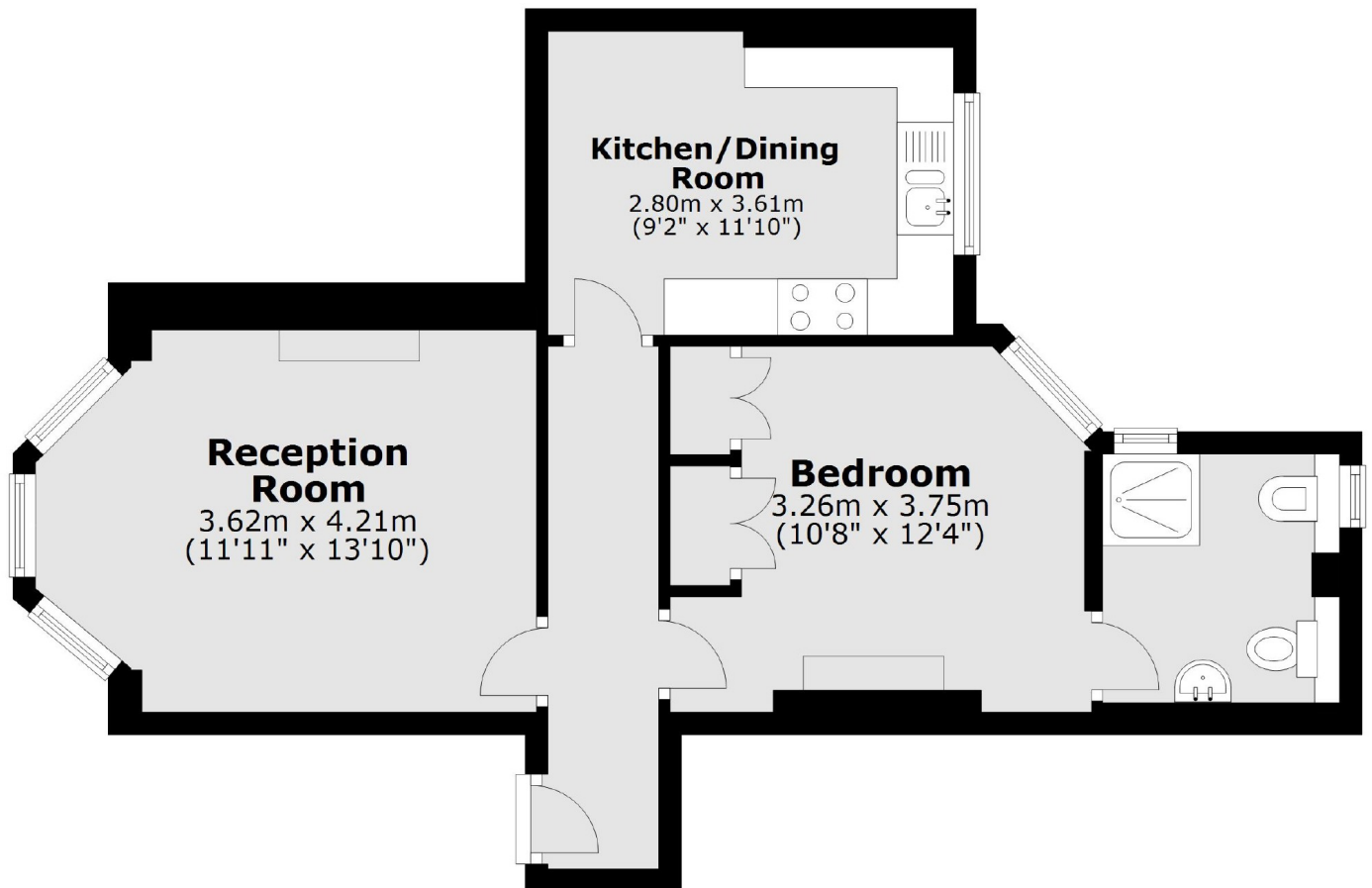
The Marlborough is a secure development located moments from the shops and restaurants on Walton Street. South Kensington and Sloane Square underground stations are both within walking distance.

Features

- Share Of Freehold
- First Floor
- One Bedroom
- Porter
- Gated Development
- Popular Location

**Walton Street,
London, SW3**

First Floor



Total area: approx. 46.9 sq. metres (504.8 sq. feet)