



Thorndike Close, SW10

£399,950

A bright one bedroom flat with access to communal gardens. Located on the second floor within a purpose built building, this property would work excellently as a London base or rental investment.

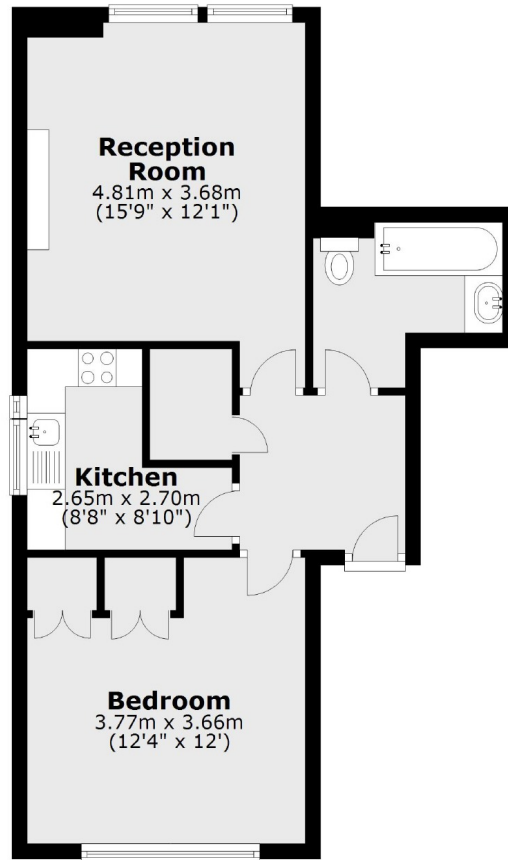
Thorndike Close is moments from Westfield Park, Fulham Broadway and Lots Road. There are a number of local restaurants, cafés and shops within close proximity.

Features

- Communal Gardens
- Second Floor
- Long Leasehold
- Low Service Charge
- One Bedroom
- Parking (Subject To Availability)

Thorndike Close, London, SW10

Second Floor



Total area: approx. 47.2 sq. metres (507.8 sq. feet)