



## Carlyle Court, SW10

£1,350,000

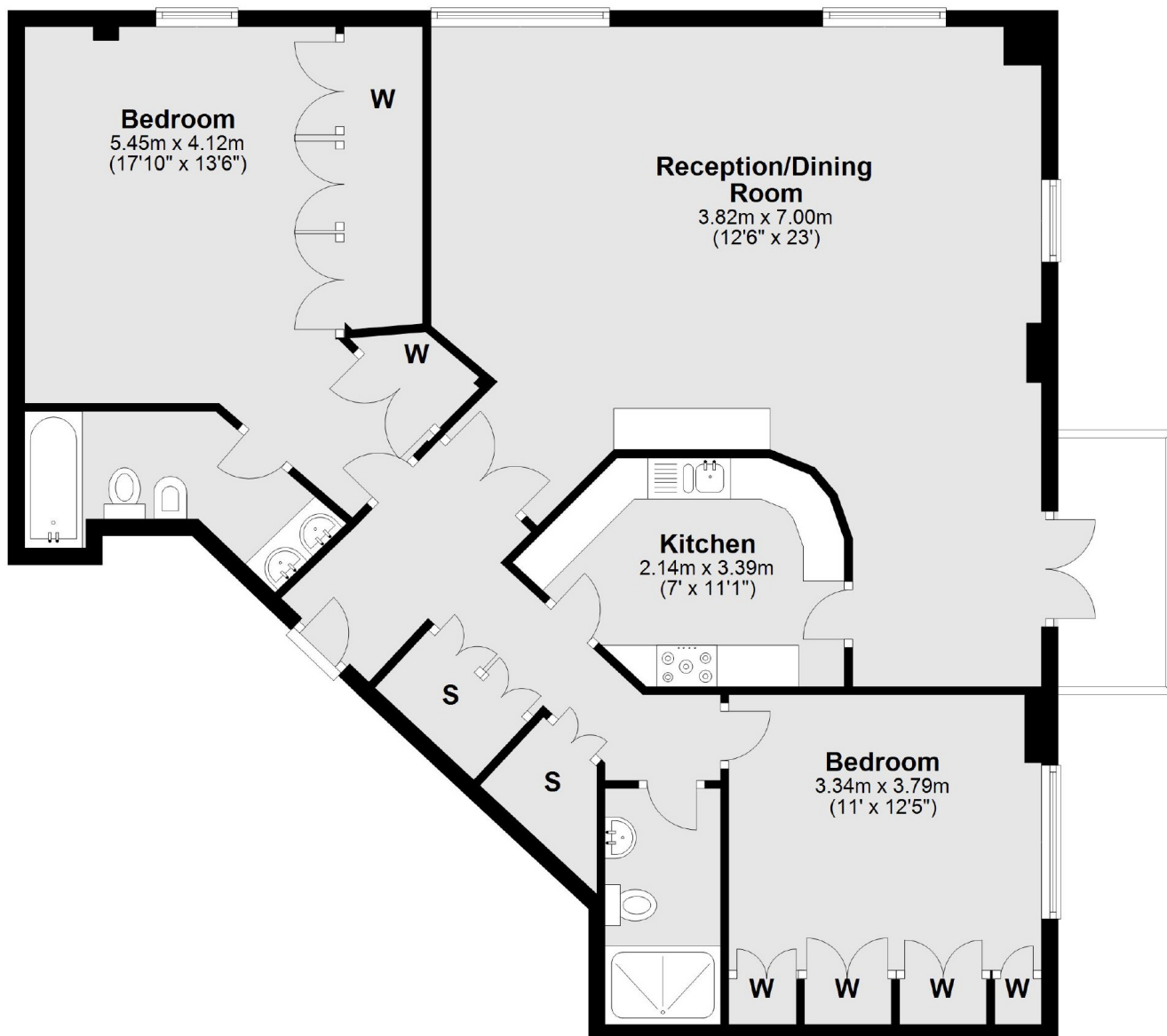
A stunning two double bedroom apartment with the benefit of views of the marina and river within the prestigious Chelsea Harbour development.

Carlyle Court is an exclusive development in Chelsea Harbour located next to the River Thames. Imperial Wharf railway station and river boats to the city are moments away.

### Features

- Spacious Apartment
- River & Marina Views
- Concierge
- Private Balcony
- Lift
- Secure Parking

# Carlyle Court, London, SW10



**First Floor**

Total area: approx. 117.8 sq. metres (1267.6 sq. feet)