



The Quadrangle, SW10

£775,000

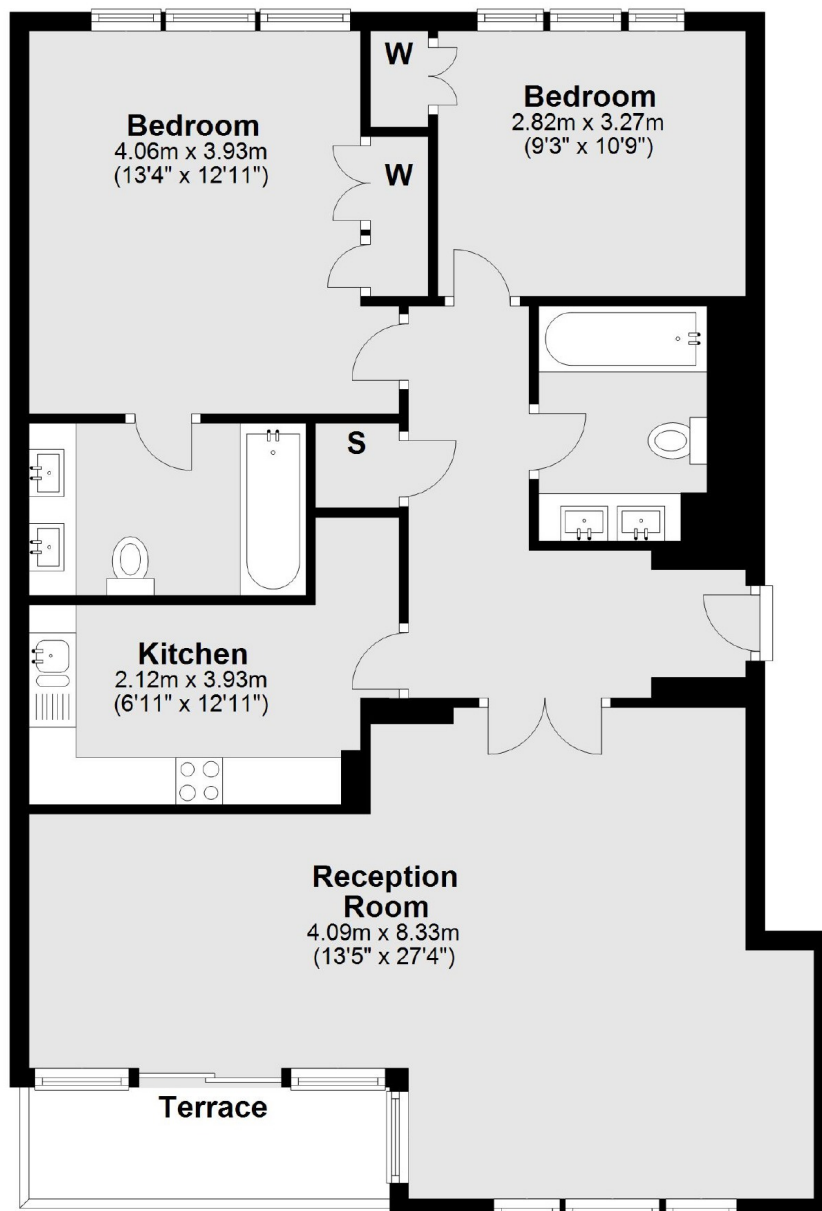
A two bedroom property now that would benefit from updating measuring close to 1000sqft. This portered apartment is located on the second floor (with lift) and has access to a balcony.

The Quadrangle is located in Chelsea Harbour which is an exclusive development located next to the River Thames. Imperial Wharf railway station and river boats to the city are moments away.

Features

- Secure Parking
- Porter
- Unmodernised
- Lift
- Second floor
- Two Double Bedrooms

The Quadrangle, London, SW10



Second Floor

Total area: approx. 90.4 sq. metres (973.4 sq. feet)