



Lettings



Carmans Close

Loose, Maidstone ME15 0DR

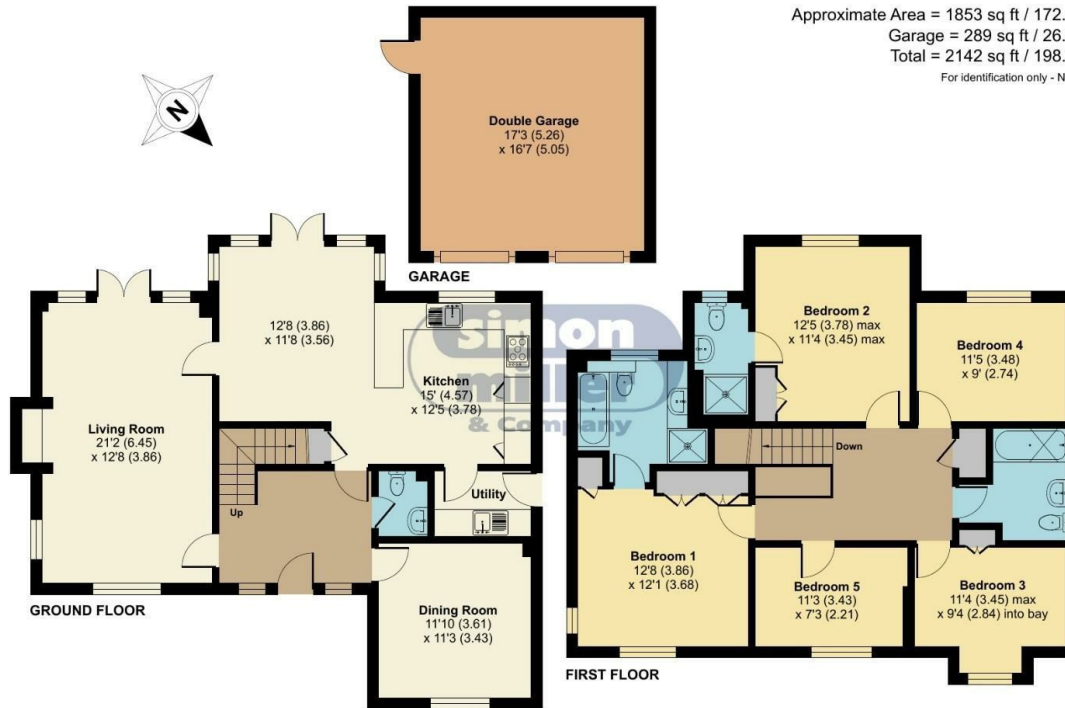
- Brand New To The Rental Market
- Stunning Throughout
 - Versatile Living
 - Large Drive Way
- Large Garden with Greenhouse and Patio Area
- Five Double Bedrooms
- Fantastic Condition
- Beautiful Master Bedroom with Luxurious Ensuite
 - Double Garage
- Property Available Beginning of July!

£2,900 Per Calendar Month

Local Authority Maidstone
Borough Council
Council Tax Band G
EPC Rating C

Carmans Close, Loose, Maidstone, ME15

Approximate Area = 1853 sq ft / 172.1 sq m
Garage = 289 sq ft / 26.8 sq m
Total = 2142 sq ft / 198.9 sq m
For identification only - Not to scale



 Floor plan produced in accordance with RICS Property Measurement Standards incorporating International Property Measurement Standards (IPMS2 Residential). © nichecom 2024. Produced for Simon Miller & Company. REF: 1121894

Lettings Office

Lettings Division, 779 London Road,
Larkfield, Aylesford, Kent, ME20 6DE

Contact

01732 875777
lettings@simonmiller.co.uk
<https://simonmiller.co.uk/landlo/services/>

Agents Note: Whilst every care has been taken to prepare these particulars, they are for guidance purposes only. All measurements are approximate and for general guidance purposes only and whilst every care has been taken to ensure accuracy, they should not be relied upon and potential buyers/tenants are advised to recheck the measurements.

