



18, Crambeth Place, Kelty, KY4 0AX.

A well appointed 2 bedroom end terraced villa with a driveway.

Offers over £115,000.







Particulars of Sale

A well finished 2 bedroom end-terraced villa in a popular setting near schools and amenities.

PARTICULARS OF SALE

SITUATION

Kelty`s amenities are all within walking distance including the village primary schools and nursery, local shops, small supermarket, cafes, pubs and local bus services. The M90 is under 0.5 miles from the property offering excellent commuter links. The secondary schooling for the village is Beath High Cowdenbeath and St Columba High in Dunfermline. The amenities of Dunfermline, Perth and Edinburgh are easily accessible by road offering extensive facilities

DESCRIPTION

The property enjoys a prime corner plot with mature level gardens and a mono block driveway formed in the front garden.

The design includes a reception hall, a spacious lounge / dining room with a gas stove style fire, a fitted kitchen with integrated appliances, an upper floor landing, 2 double bedrooms and a quality shower room. There is a gas fired central heating system, double glazing and a range of in built storage space.

The property is perfect for couples and families.

Viewing is recommended.

GENERAL INFORMATION

VIEWING By appointment please telephone J & G Wilson on 01577 862302 or email contact@jgwilson.co.uk

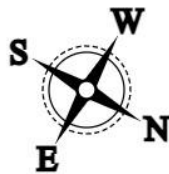
COUNCIL TAX The property is Band A.

ENERGY RATING The property is rated as C (70).

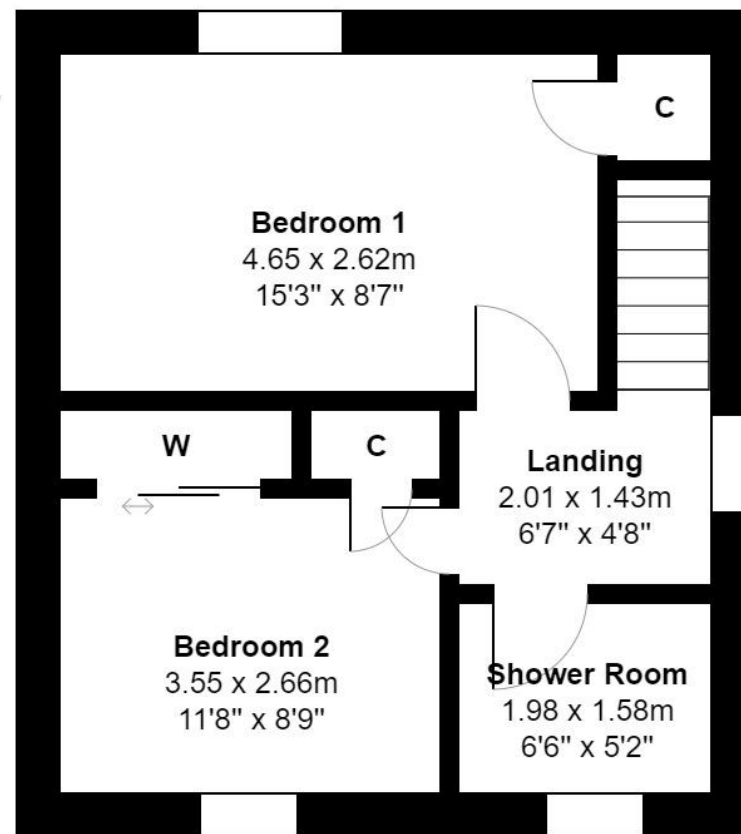
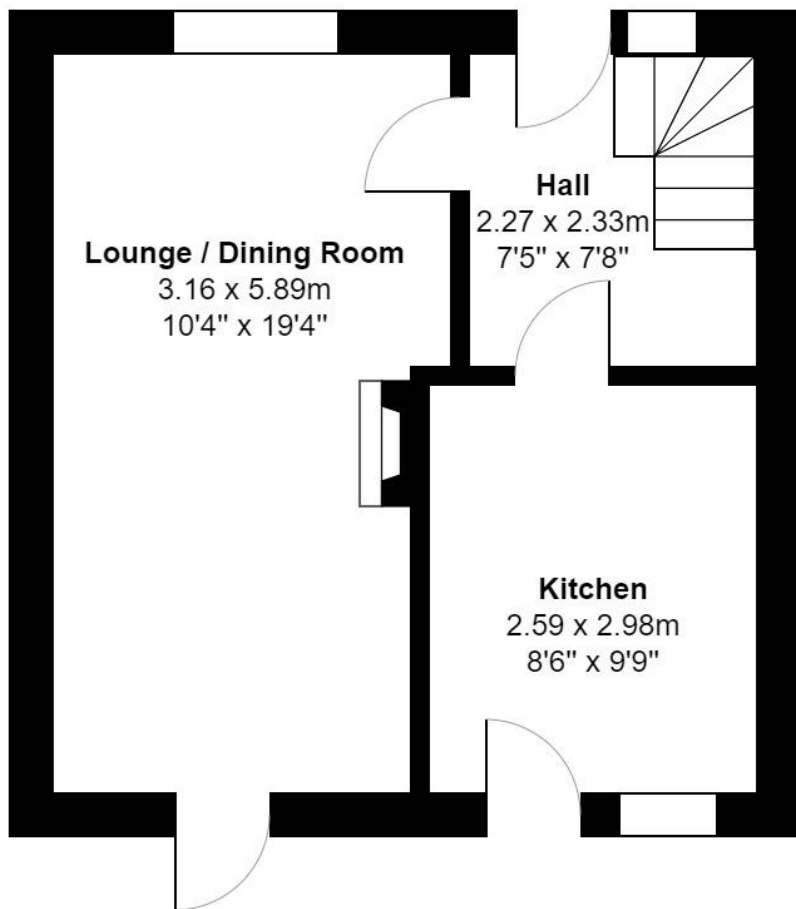
Particulars prepared May 2024.

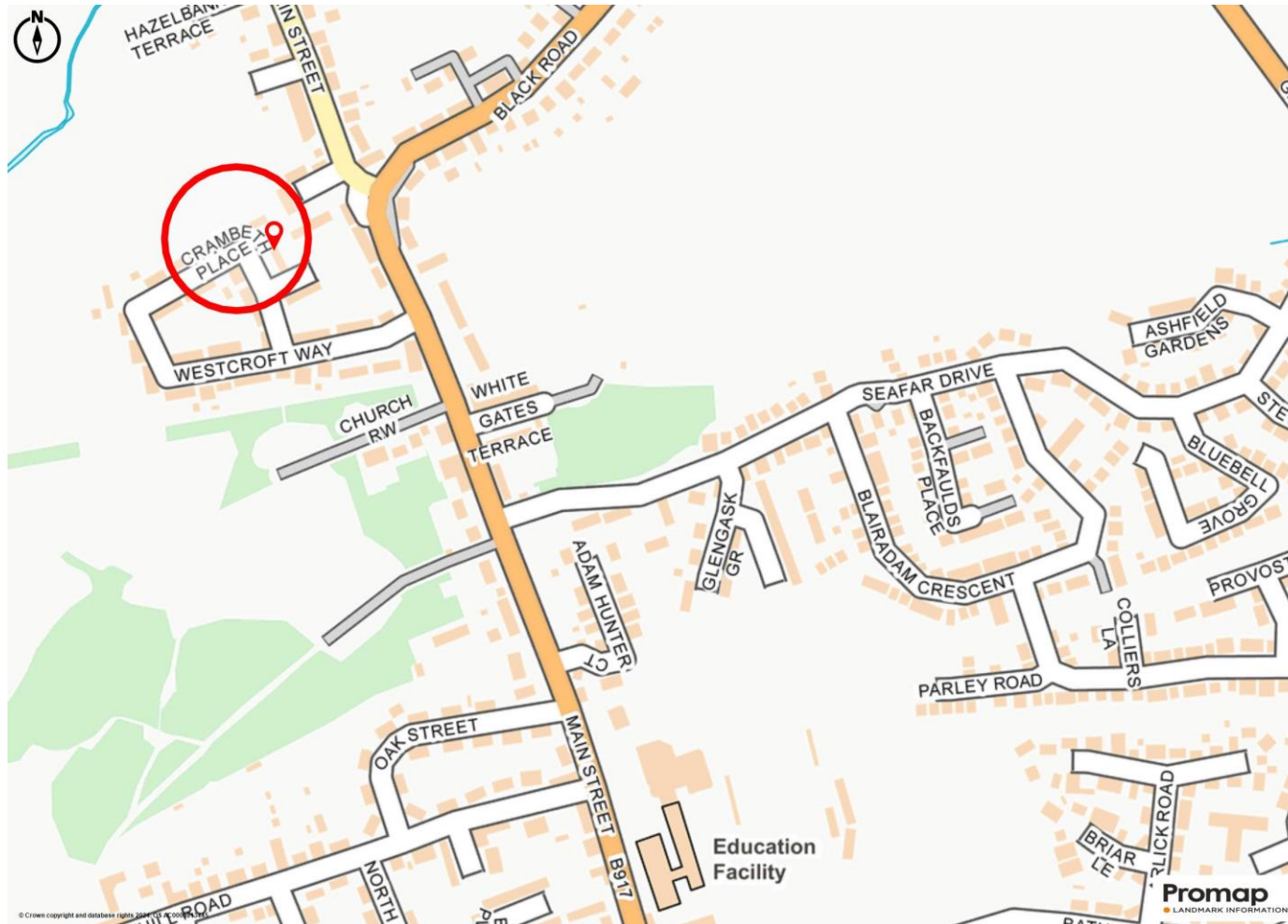






18, Crambeth Place,
Kelty,
KY4 0AX.
(Not to scale).





PARTICULARS AND MISREPRESENTATION

J & G Wilson Law & Property are for themselves and for the owners of this property whose agents they are give notice that these particulars are set on as a general outline only for the guidance of intending purchasers or tenants and do not constitute part of an offer or contract.

Selling Agents

J & G Wilson
18 High Street
Kinross
KY13 8AN

T: 01577 862302
E: contact@jgwilson.co.uk
www.jgwilson.co.uk