



Private and Gated Modern House at Balls Park

Three Bedrooms, Two Bathrooms

Private Garden

Off Street Parking

Short Walk /Drive to Hertford Town Centre

Good School Catchment Area.

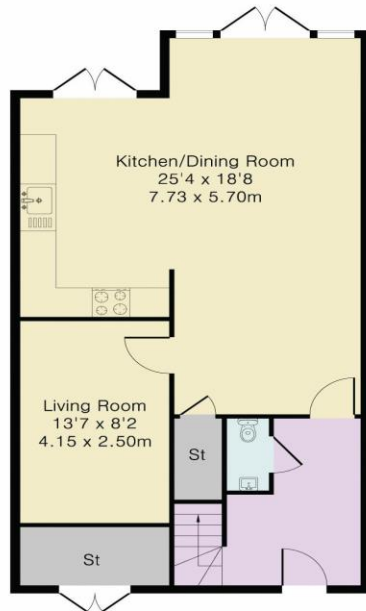


6 Willis Grove
Hertford, SG13 8FH

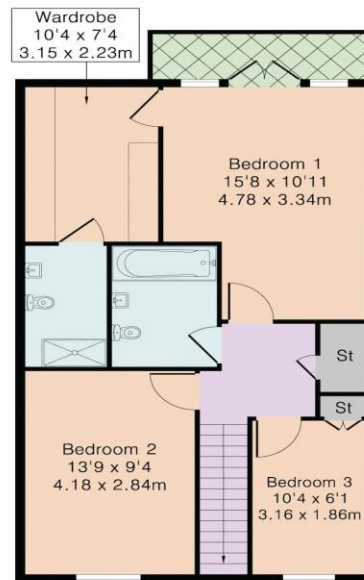
Offers Over £700,000

Located in a sought after gated community within the Balls Park Estate, Willis grove is a private road moments away from Hertford Town Centre. This property has three bedrooms, two bathrooms, a large open plan reception, further TV room and a modern kitchen. to the rear there is a private garden and with countryside views and off street parking is available to the front of the house. Please register your interest: 01992 721 321

Approximate Gross Internal Area 1271 sq ft – 118 sq m
 Ground Floor Area 657 sq ft – 61 sq m
 First Floor Area 614 sq ft – 57 sq m



Ground Floor



First Floor



Although Pink Plan Ltd ensures the highest level of accuracy, measurements of doors, windows and rooms are approximate and no responsibility is taken for error, omission or misstatement. These plans are for representation purposes only as defined by RICS code of measuring practise. No guarantee is given on total square footage of the property within this plan. The figure icon is for initial guidance only and should not be relied on as a basis of valuation.



Energy performance certificate (EPC)

6, Willis Grove
Balls Park
HERTFORD
SG13 8FH

Energy rating

C

Valid until: 1 December 2025

Certificate number: 9046-3802-7328-9605-4361

Property type

Mid-terrace house

Total floor area

104 square metres

Rules on letting this property

Properties can be rented if they have an energy rating from A to E.

If the property is rated F or G, it cannot be let, unless an exemption has been registered. You can read [guidance for landlords on the regulations and exemptions \(https://www.gov.uk/guidance/domestic-private-rented-property-minimum-energy-efficiency-standard-landlord-guidance\)](https://www.gov.uk/guidance/domestic-private-rented-property-minimum-energy-efficiency-standard-landlord-guidance).

Energy efficiency rating for this property

This property's current energy rating is C. It has the potential to be B.

[See how to improve this property's energy performance.](#)

Score	Energy rating	Current	Potential
92+	A		
81-91	B		91 B
69-80	C	80 c	
55-68	D		
39-54	E		
21-38	F		
1-20	G		

The graph shows this property's current and potential energy efficiency.

Properties are given a rating from A (most efficient) to G (least efficient).

Properties are also given a score. The higher the number the lower your fuel bills are likely to be.

For properties in England and Wales:

the average energy rating is D
the average energy score is 60

MONEY LAUNDERING REGULATIONS 2003

intending purchasers will be asked to produce identification and proof of financial status when an offer is received. We would ask for your co-operation in order that there will be no delay in agreeing the sale. THE PROPERTY MISDESCRIPTIONS ACT 1991

The Agent has not tested any apparatus, equipment, fixtures and fittings or services and so cannot verify that they are in working order or fit for the purpose. A Buyer is advised to obtain verification from their Solicitor or Surveyor. References to the Tenure of a Property are based on information supplied by the Seller. The Agent has not had sight of the title documents. A Buyer is advised to obtain verification from their Solicitor. You are advised to check the availability of this property before travelling any distance to view. We have taken every precaution to ensure that these details are accurate and not misleading. If there is any point which is of particular importance to you, please contact us and we will provide any information you require. This is advisable, particularly if you intend to travel some distance to view the property. The mention of any appliances and services within these details does not imply that they are in full and efficient working order. These particulars are in draft form awaiting Vendors confirmation of their accuracy. These details must therefore be taken as a guide only and approved details should be requested from the agents.