

Welcome to
EAST RIDGEWAY

THOMAS
CHILDS &
CO
ESTATE AGENTS

The prestigious road of East Ridgeway in Cuffley boasts a magnificent seven bedroomed property, offering up 8200 square feet of luxury modern living space. On arrival at the property, through its own gated parking, you'll pass through landscaped front gardens before entering a hyper-modern space with an elegant imperial staircase.



From this impressive reception area, you will find a cinema room fitted with Dolby 7.1 surround sound, a 86" LCD screen, air conditioning, small bar, and a star-light ceiling.

On your left, you have a formal sitting room. It is large and has a beautiful curved window. Just opposite, is a luxurious white seated reception room, furnished with large aquariums, and a separate home gym fully-fitted Live Strong equipment.



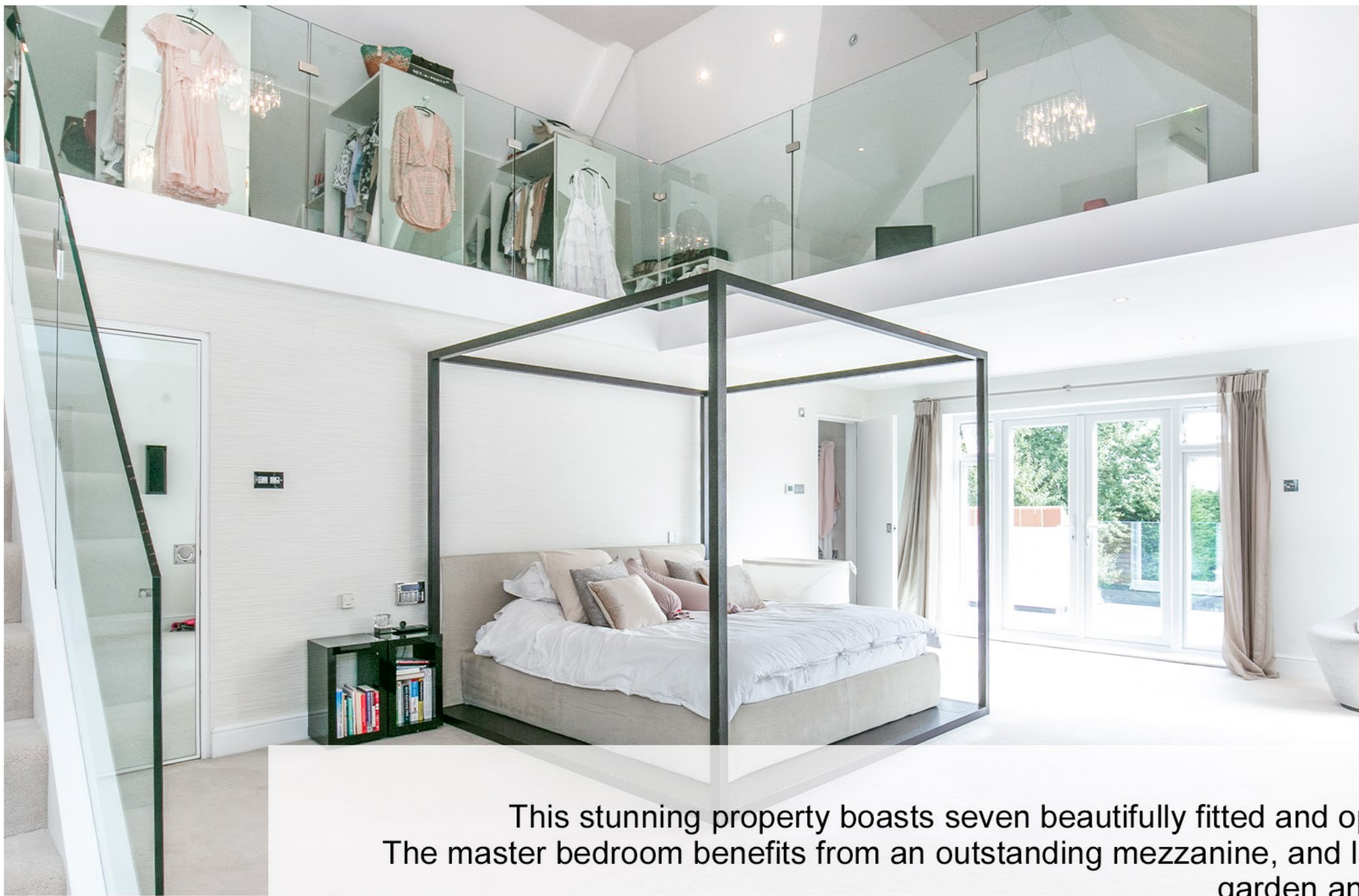


The crowning jewel of the ground floor is the stylishly refined kitchen and large family area - designed and installed by Point 5 Kitchen with Gaggenau appliances. Its' simple and spacious design is sure to relax even the most chaotic of cooks. Views from the kitchen showcase the classically landscaped garden; replete with mature trees and shrubs.

You will also find an outdoor kitchen area inclusive of alfresco pizza oven, grill, and hot/cold taps.

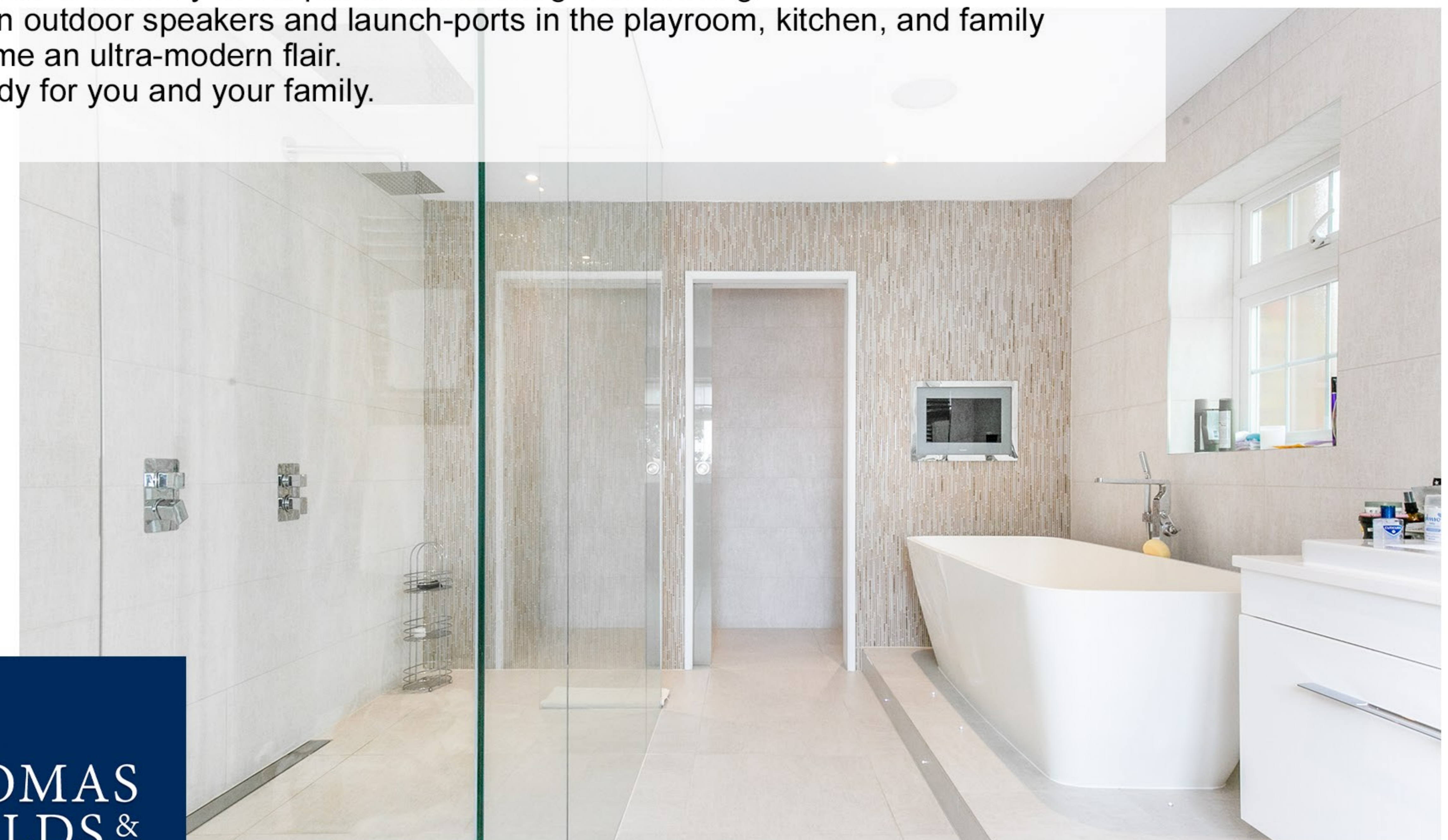
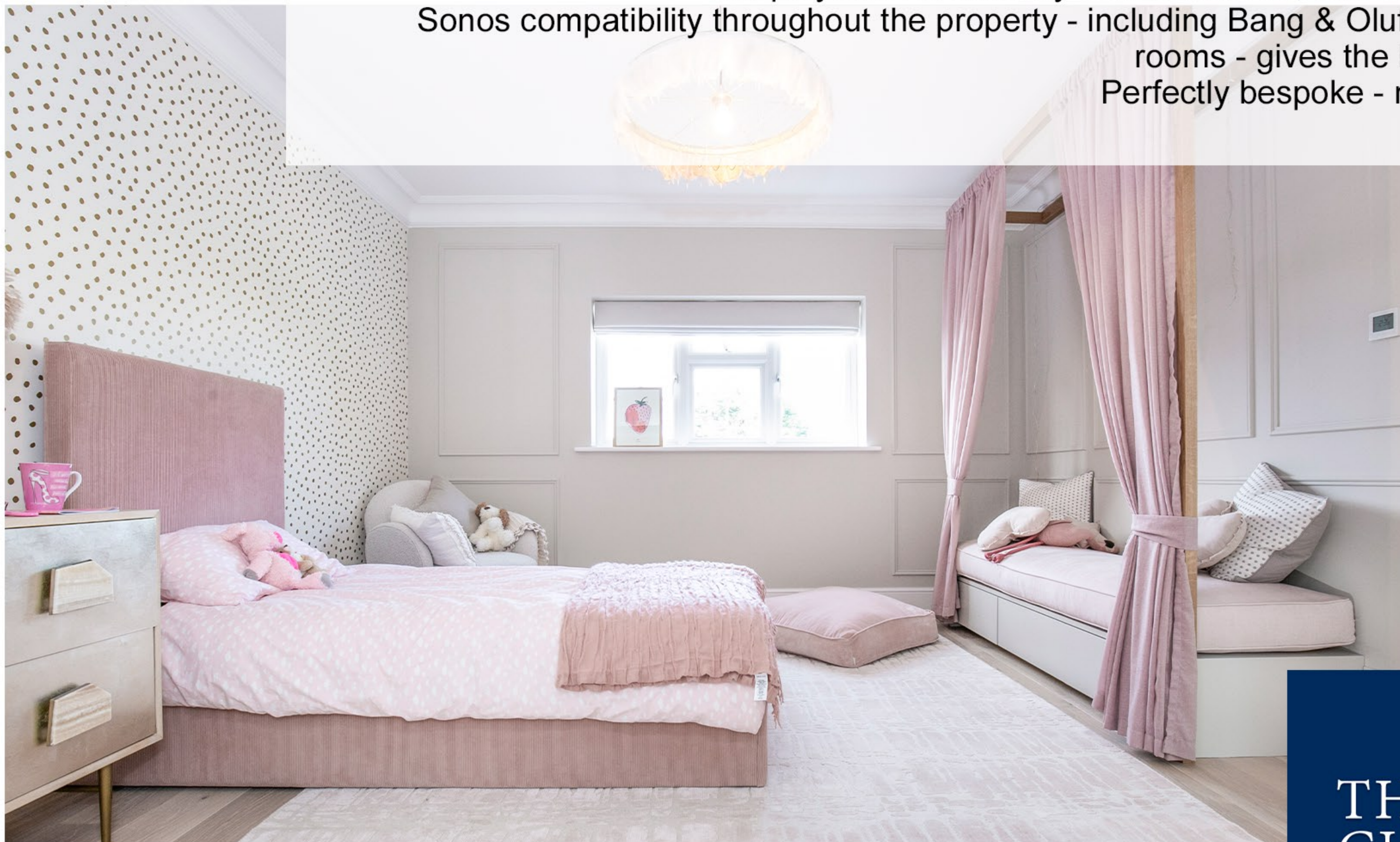
From here, you are able to look out over the large heated pool, which is situated close to the extension - inside of which is a spa-like garden room, tastefully designed to provide a sense of ultimate leisure. Much like the majority of the property, this garden room has been fashioned by Cherie Lee Interiors.





This stunning property boasts seven beautifully fitted and opulent bedrooms, six of which are complete with spacious en-suites. The master bedroom benefits from an outstanding mezzanine, and large double doors lead onto a private terrace which overlooks the manicured garden and pool area below.

The playroom is similarly well-structured, with alcoves and cubby-holes perfect for reading and relaxing. Sonos compatibility throughout the property - including Bang & Olufsen outdoor speakers and launch-ports in the playroom, kitchen, and family rooms - gives the home an ultra-modern flair. Perfectly bespoke - ready for you and your family.



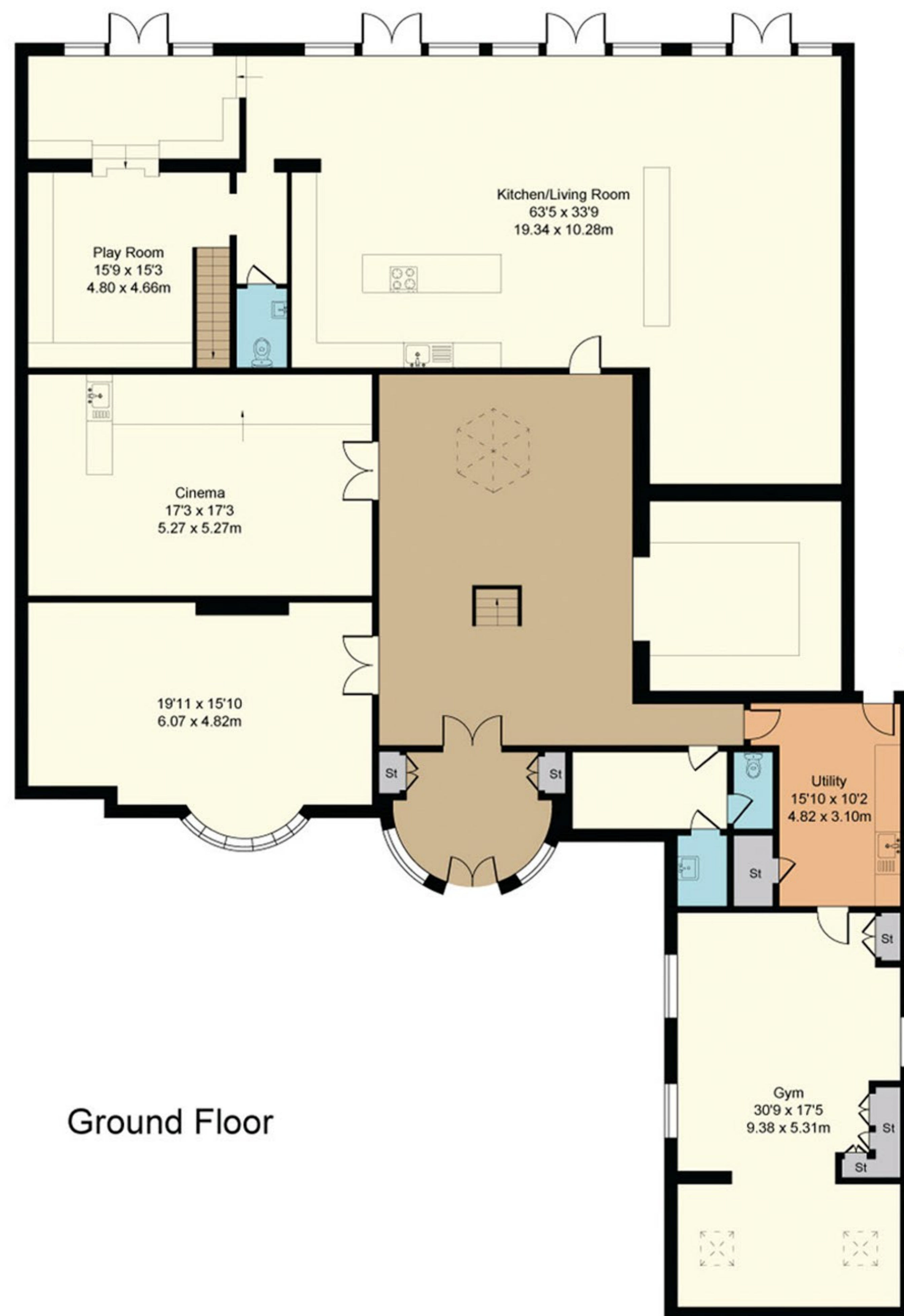
**THOMAS
CHILDS &
CO**
ESTATE AGENTS



THOMAS
CHILDS & CO
ESTATE AGENTS

This property is fitted with Hikvision surveillance and monitoring CCTV systems - the nine cameras throughout include two situated inside the property. To conclude, this property wants for nothing. It is an extremely rare find, in a truly fantastic location. Cuffley, a commuter hotspot, benefits from excellent road and rail links, able to get you directly into Moorgate, London in only 35 minutes.

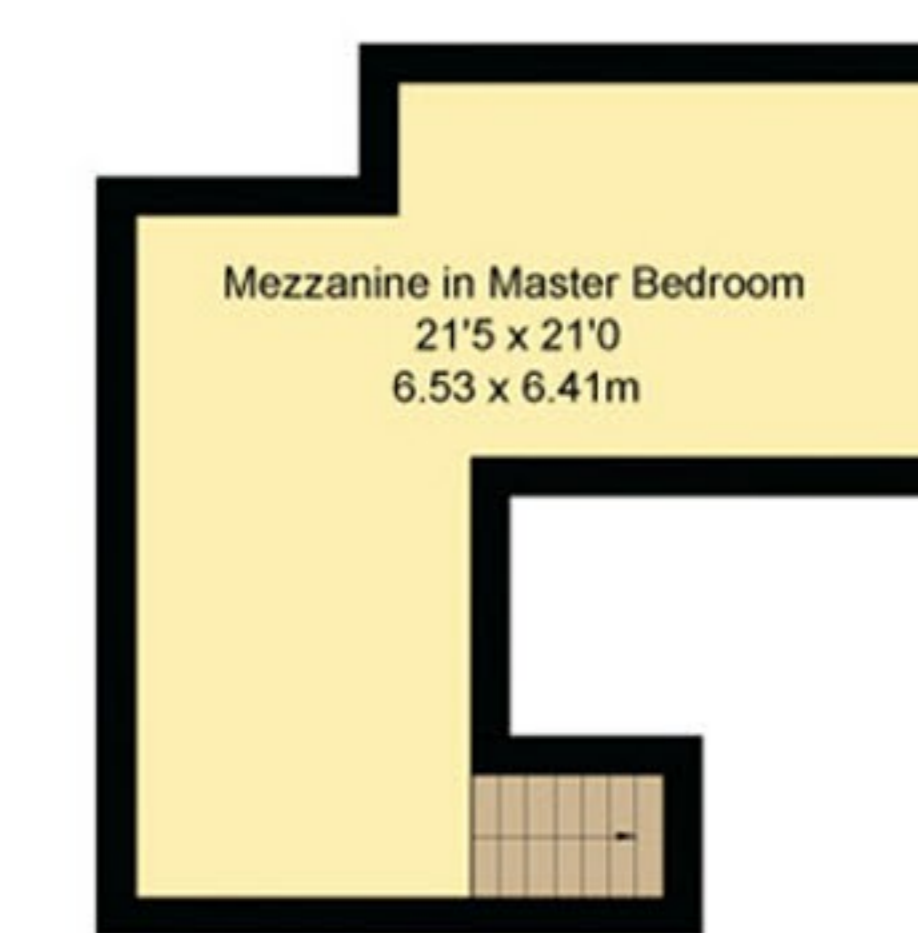
Approximate Gross Internal Area
8201 sq ft - 762 sq m



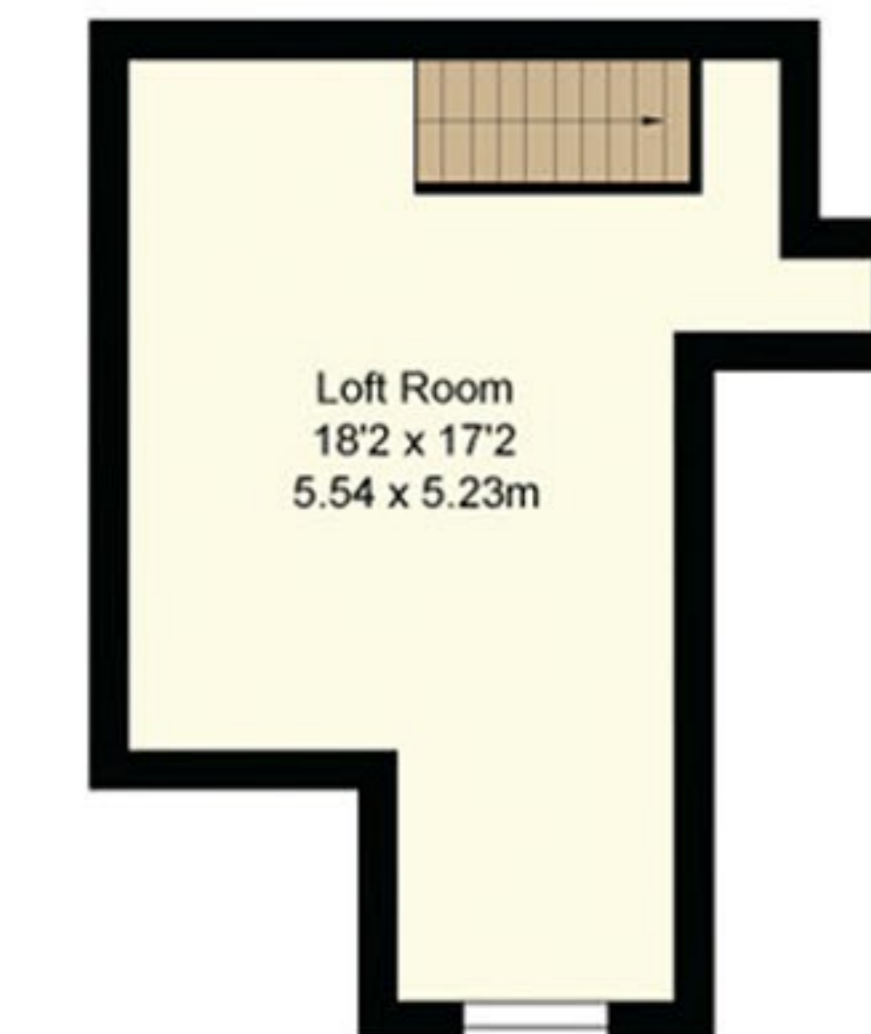
Ground Floor



First Floor



Mezzanine



Loft Room

THOMAS
CHILDS &
CO
ESTATE AGENTS