

campbell
smith

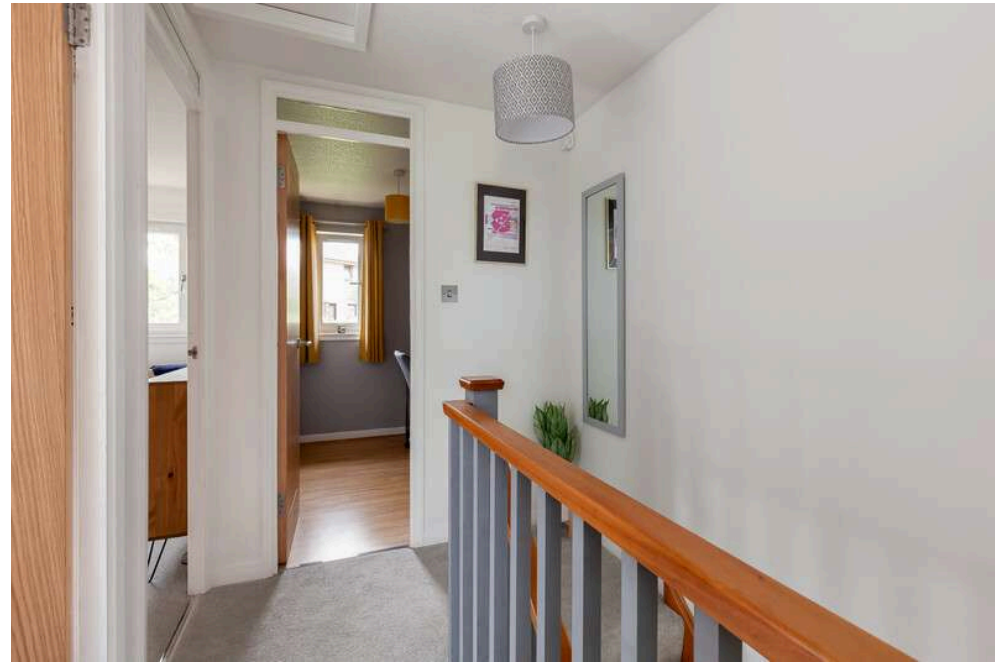
37 Currievale Park Grove,
Currie,
EH14 5XA



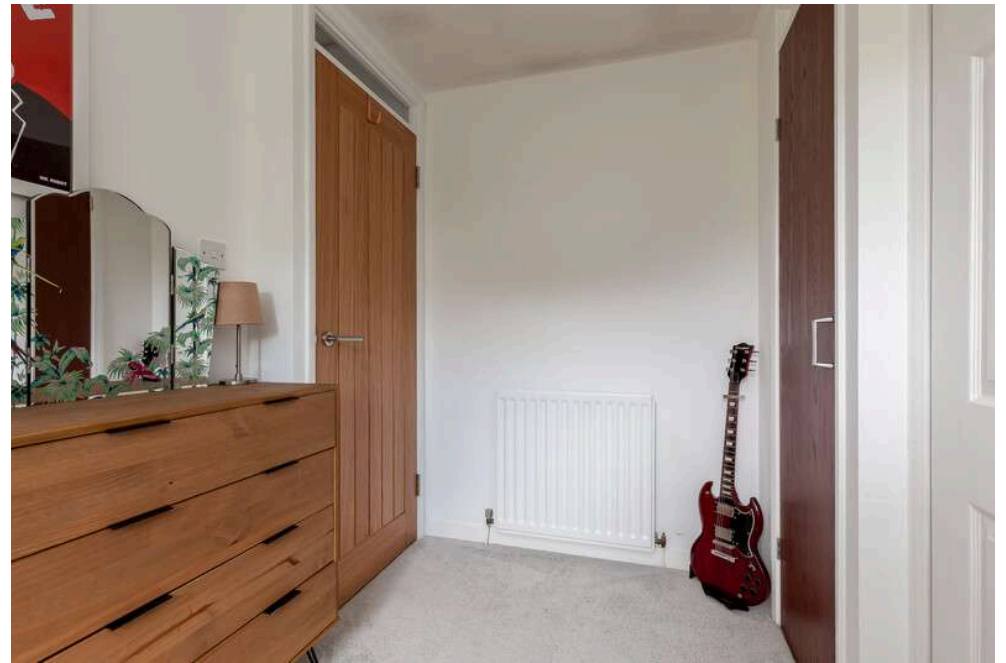
- Beautifully presented semi detached villa
- Move in condition
- Sitting room
- Dining kitchen with appliances and patio doors
- 3 bedrooms
- Bathroom with shower over bath
- GCH/DG
- Lovely well stocked rear garden with patio and shed
- Driveway

Offers Over : £259,000









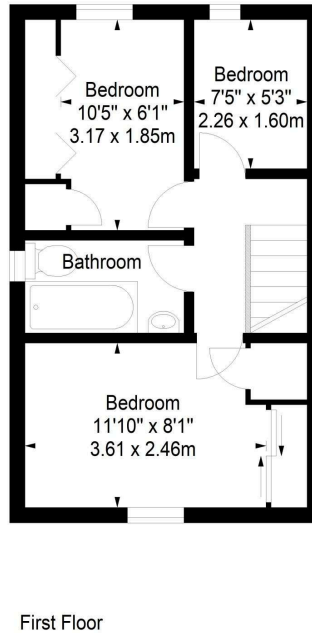
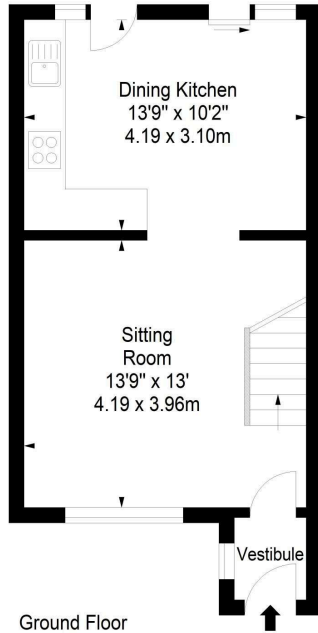
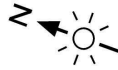




Currievale Park Grove,
Currie,
Midlothian, EH14 5XA



Approx. Gross Internal Area
669 Sq Ft - 62.15 Sq M
For identification only. Not to scale.
© SquareFoot 2024



+ Extras
The fitted carpets, blinds, curtains, kitchen white goods and shed & are included

Buses
Lanark Road West - 32, 44, 63, N44

Shops
Scotmid on Pentland View Court & Sainsbury Local on Lanark Road West, Juniper Green, the Cyle Shopping Centre & Hermiston Gait retail park

Schools
Currie PS, St Cuthbert's RC PS, Currie Community High School, St Augustine's RC HS

Parking
Driveway

Council Tax Band - D

EPC - C

Factor
None

Viewing
Telephone Campbell Smith on
0131 555 2999

DISCLAIMER
While our sales particulars are believed to be accurate and reliable, no guarantee is given as to their correctness or accuracy, if there is any point which is of particular importance to you, please contact the office and we will be pleased to check the information. The mention of any appliances and/or services in these details does not imply that these are in full and efficient working order. All measurements are taken using a sonic measuring tape and are therefore approximate sizes only.



21 York Place, Edinburgh, EH1 3EN
Tel: 0131 555 2999
Fax: 0131 555 5450
camsmith.co.uk