



6 Edward Lisle Gardens
Tettenhall, WV6 8UB

peterjames
PROPERTY

6 Edward Lisle Gardens

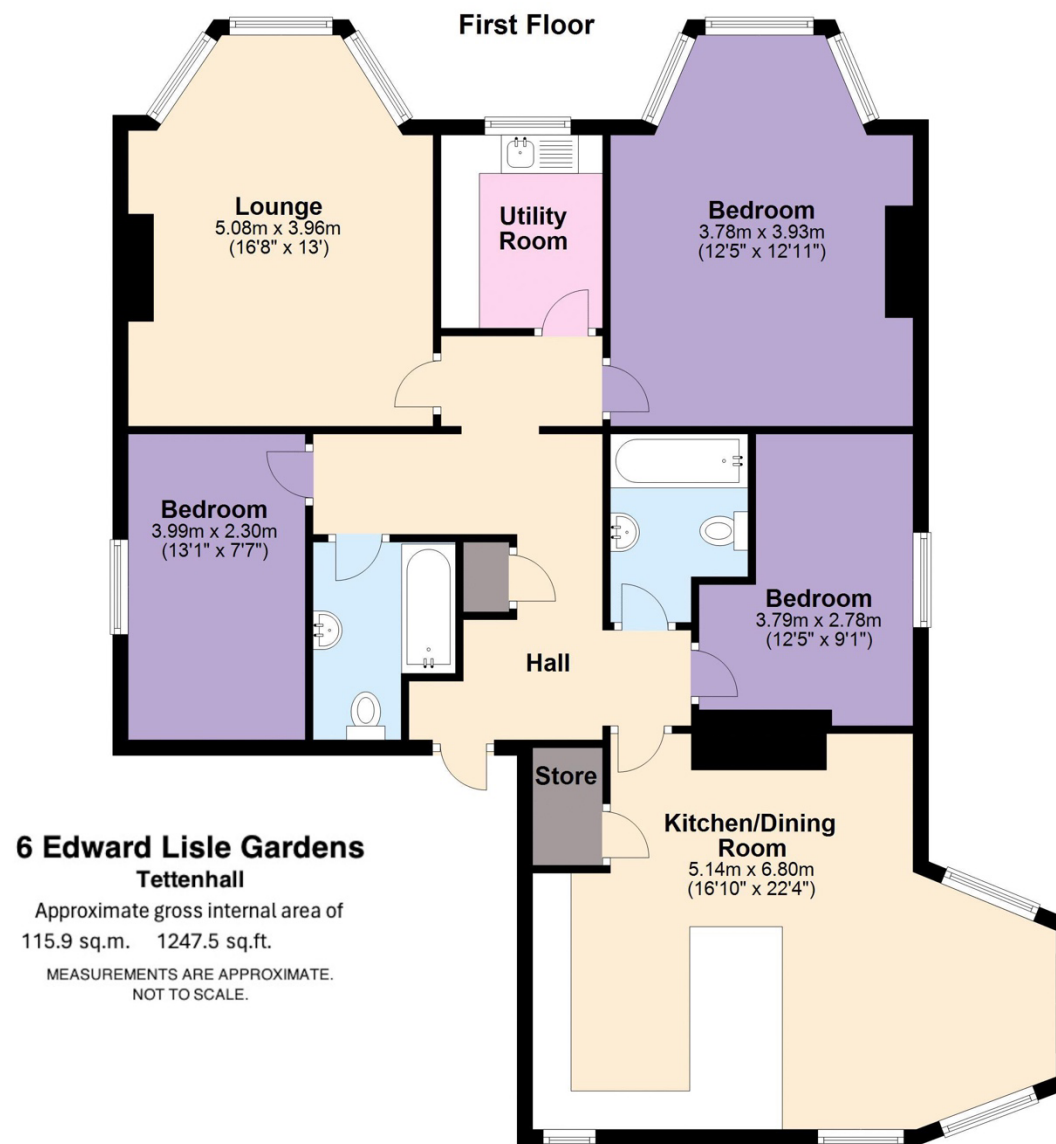
Wolverhampton – 2.7 miles
Tettenhall – 0.3 miles
(Distances are approximate)

A beautifully present three-bedroom first-floor apartment, formerly two separate apartments.

Spacious hall
Sitting room with bay window
Large kitchen/dining/living room
Master bedroom with bay window
Second double bedroom
Third double bedroom/study
Two family bathrooms
Gated parking
Lovely communal gardens
Secure entry with intercom system







EPC - The EPC is attached to these particulars. If it has become detached or is lost, please contact us for a further copy.

Fixtures and Fittings - All carpets and curtains are excluded from the sale but may be available by separate negotiation.

peterjames
PROPERTY

2 High Street, Tettenhall, WV6 8QT
Tel: 01902 754777

Email: sales@peterjamesproperty.com
www.peterjamesproperty.com