



5d Lower Green

Tettenhall
WV6 9AH

Guide Price £325,000

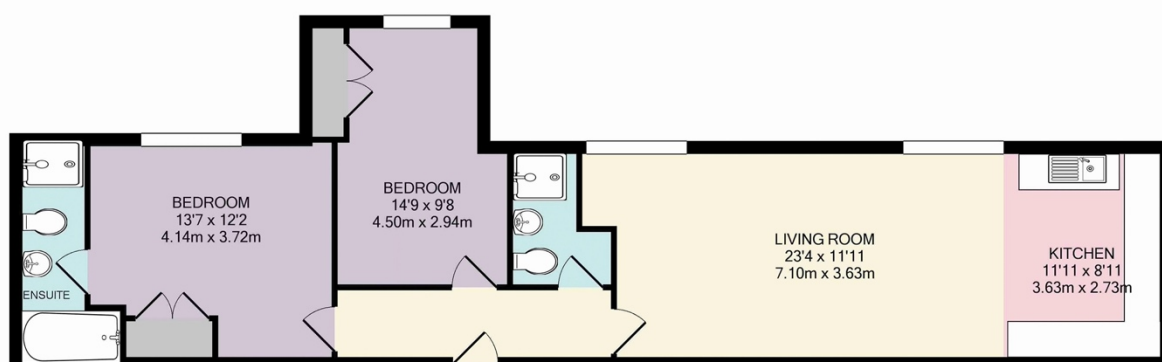
peterjames
PROPERTY



5d Lower Green, Tettenhall, Wolverhampton

An enviable 2 bedroom first floor apartment individually designed to a high specification having only had one owner * Immediately off Tettenhall's leafy Lower Green * Walking distance to local amenities and bus links * Private development * Hall * Open plan kitchen, dining and living area * Fully integrated, appliances * Finished to an excellent standard throughout, with cohesive contemporary décor * Master bedroom with en suite * Second double bedroom * Built in Wardrobes * Family bathroom * Secure electric gated parking to rear * Private and Maintained communal gardens to the rear * Bike store * The Apartment is benefiting from Cat 6 cabling * Zoned lighting * Corian topped kitchen worktops * High end Bristan showers * Bosch hob & oven * Existing build zone guarantee * NO CHAIN *

This excellent first-floor apartment is situated within the former Mitre Inn, a charming black and white timber period building which directly faces Tettenhall's lovely Lower Green. Set well back from the main road, the apartments are ideally positioned within easy walking distance of a range of excellent amenities, including the range of independent shops and eateries offered by Tettenhall High Street. Apartment D enjoys the exclusive benefit of being the only apartment within the complex to enjoy direct views from all windows over Lower Green. Within, the apartment offers two generous double bedrooms including the master en suite, with a chic family bathroom. The well-proportioned open-plan living, kitchen and dining area features a contemporary fitted kitchen with integrated appliances.



APARTMENT D, THE MITRE APARTMENTS
TOTAL APPROX. FLOOR AREA 828 SQ.FT. (76.9 SQ.M.)
Measurements are approximate. Not to scale. Illustrative purposes only
Made with Metropix ©2016

Fixtures & Fittings - All carpets and curtains are excluded from the sale but may be available by separate negotiation.