



72a Wrottesley Road  
Tettenhall, WV6 8SF

peterjames  
PROPERTY



# 72a Wrottesley Road

Tettenhall – 0.5 miles

Wolverhampton – 2.8 miles

(Distances are approximate)

A very appealing three-bedroom detached house set back from the road in sought-after Tettenhall, just a short walk from Upper Green.

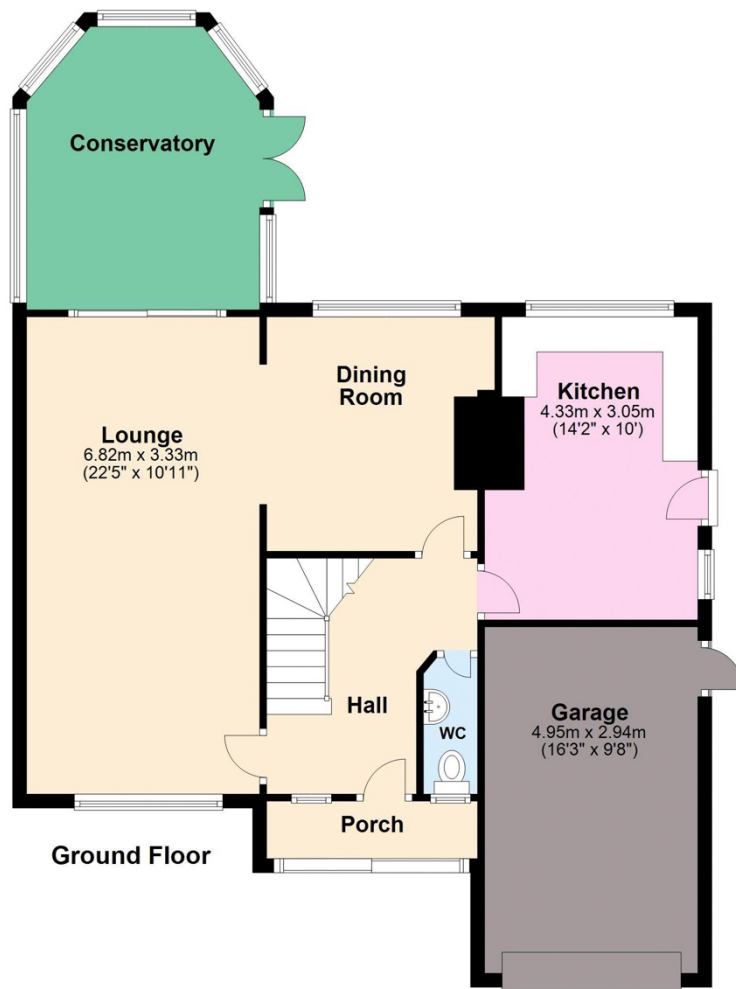
Porch  
Hall  
Downstairs WC  
Lounge  
Dining room  
Conservatory  
Kitchen with fridge freezer and washer/dryer  
Landing  
Master bedroom with en-suite shower room  
Two further double bedrooms  
Family bathroom  
Separate first-floor WC  
Garage  
Driveway parking for multiple cars  
Good-sized rear garden  
Potential to extend subject to planning permission











## 72a Wrottesley Road

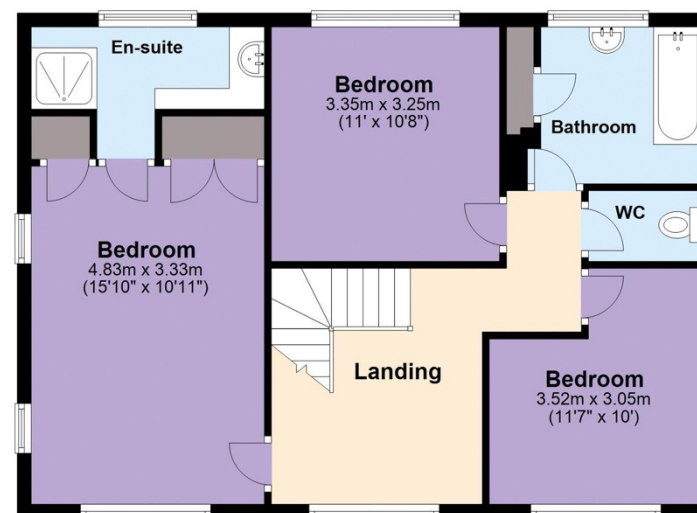
Tettenhall

HOUSE: 139.2 sq.m 1,498 sq.ft.

GARAGE: 14.6 sq.m 157 sq.ft.

**TOTAL: 153.7 sq.m 1,654 sq.ft.**

DOORS, WINDOWS AND OTHER FURNITURE ARE FOR ILLUSTRATION ONLY, SIZE AND LOCATION APPROXIMATE.



**EPC** - The EPC is attached to these particulars. If it has become detached or is lost, please contact us for a further copy.

**Fixtures and Fittings** - All carpets and curtains are excluded from the sale but may be available by separate negotiation.

**peterjames**  
PROPERTY

2 High Street, Tettenhall, WV6 8QT

**Tel:** 01902 754777

**Email:** sales@peterjamesproperty.com

**www.peterjamesproperty.com**