



The Gatehouse, Burlington Court
Shifnal, TF11 8BW

peterjames
PROPERTY

The Gatehouse

Telford – 7.4 miles

Shifnal – 3.9 miles

(Distances are approximate)

A beautifully presented and charming 3-bedroom detached barn conversion on a quiet rural development, offering a tranquil countryside retreat with exceptionally convenient commuter links.

Large living area with double-height ceiling

Breakfast kitchen

Family bathroom

Master bedroom with ensuite, split over two floors

Two further double bedrooms

Driveway parking

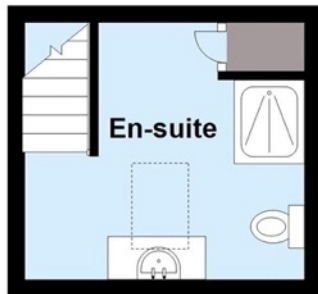
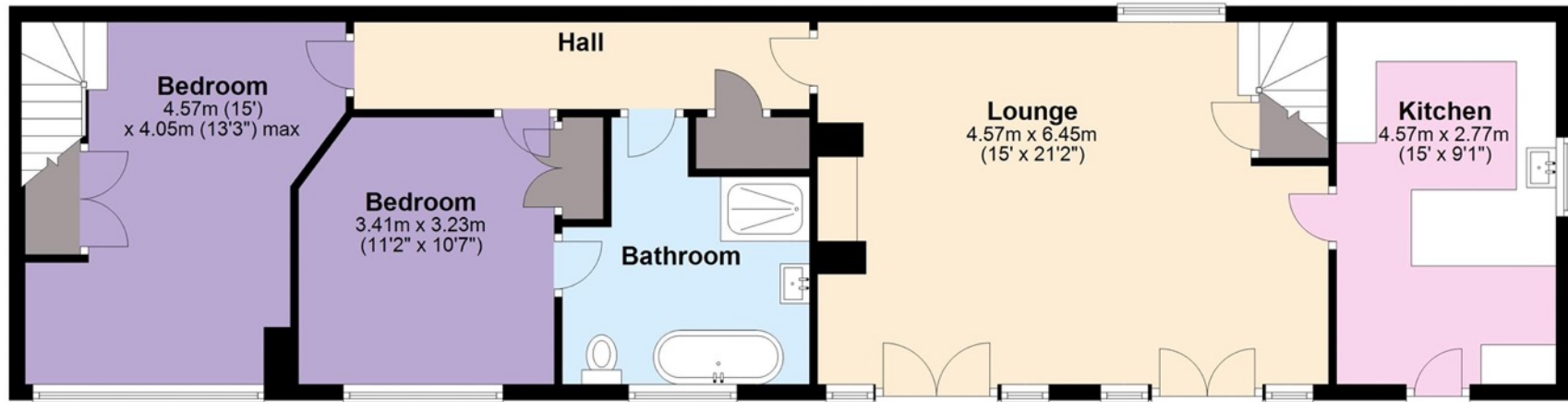
Well presented gardens

Tranquil countryside views





Ground Floor



Split First Floor

The Gatehouse Burlington Court

Approximate gross internal area of
(excluding storage space)
110.8 sq.m. 1192.6 sq.ft.

MEASUREMENTS ARE APPROXIMATE.
NOT TO SCALE.



EPC - The EPC is attached to these particulars. If it has become detached or is lost, please contact us for a further copy.

Fixtures and Fittings - All carpets and curtains are excluded from the sale but may be available by separate negotiation.

peterjames
PROPERTY

2 High Street, Tettenhall, WV6 8QT
Tel: 01902 754777

Email: sales@peterjamesproperty.com
www.peterjamesproperty.com