



6 Tudor Court  
Bridgnorth, WV16 4DQ

peterjames  
PROPERTY

# 6 Tudor Court

Wolverhampton – 14.6 miles

Telford – 13.8 miles

(Distances are approximate)

A spacious 2-bedroom terraced house just steps from the centre of picturesque Bridgnorth.

Hall

Downstairs WC

Breakfast kitchen

Conservatory

Lounge

Two en-suite double bedrooms

Charming low-maintenance walled Gardens



## 6 Tudor Court

Just off Bridgnorth's bustling and historic High Street, this charming 2-bedroom terraced house offers a relaxed lifestyle at the heart of an idyllic Shropshire market town, only steps from a wide range of restaurants, coffee shops, and vibrant weekly markets. Bridgnorth is ideal for commuting to Wolverhampton, Shrewsbury, and Telford, yet is surrounded by glorious open countryside. The property offers a good-sized breakfast kitchen with space for dining, a comfortable lounge, and a substantial conservatory at the rear. Upstairs, two double bedrooms each enjoy an attractive en suite, while a delightful courtyard-style walled garden is located behind the house.



At the front of the property, a grey door opens to the L-shaped **hallway**, where the **downstairs WC** can be found to the right. On the left, the **breakfast kitchen** is of a good size, laid with wooden flooring and furnished with timber-style units and granite-effect worktops. A gas hob and integrated oven are provided in addition to space for a fridge-freezer and washing machine. Double doors continue to the spacious **conservatory** at the rear, offering patio doors to the garden. On the right-hand side of the hall, one enters the sizeable **through lounge**, featuring a window to the front elevation and patio doors to the rear. An internal door conceals storage beneath the stairs.

At the rear of the hallway stairs continue to the first-floor landing, lit by a roof window overhead. The **master bedroom** is located opposite the staircase, having a roof window, a dormer window to the front, and a well presented en suite. The **en suite** includes white fittings and a walk-in shower. The

**second bedroom** is a further comfortable double overlooking the garden with a built-in cupboard and a well-appointed **en suite**, having a bath with shower attachment.

The property is approached via a patio-style garden at the front and enjoys a low maintenance outdoor space to the rear, enclosed by charming red brick walls.

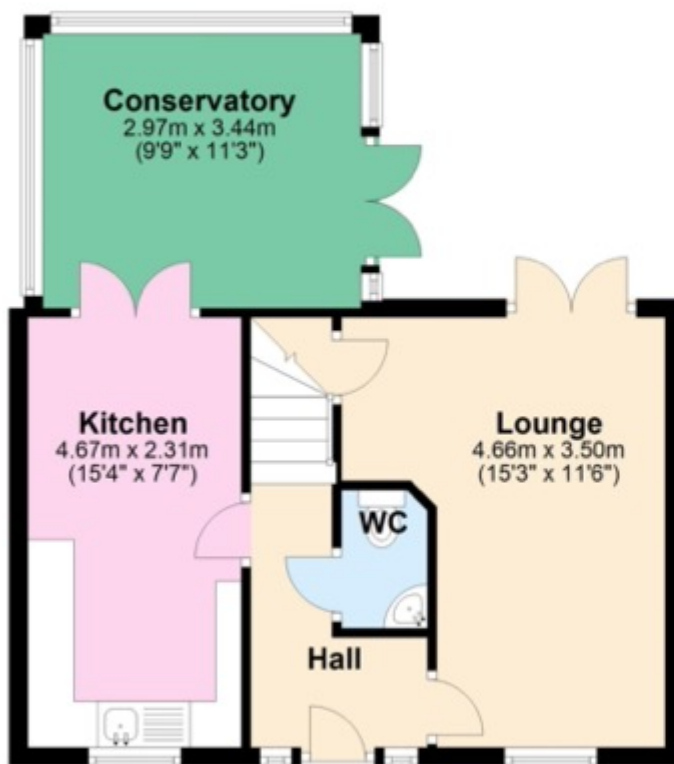
### Situation

Located on a select development just off the High Street at the heart of Bridgnorth, an ancient river-port built around majestic sandstone cliffs bordering the Severn. Now a picturesque Shropshire market town, Bridgnorth offers an excellent range of amenities and services including supermarkets, traditional weekly street markets, and a broad selection of independent eateries and retailers positioned just a couple of minutes' walk

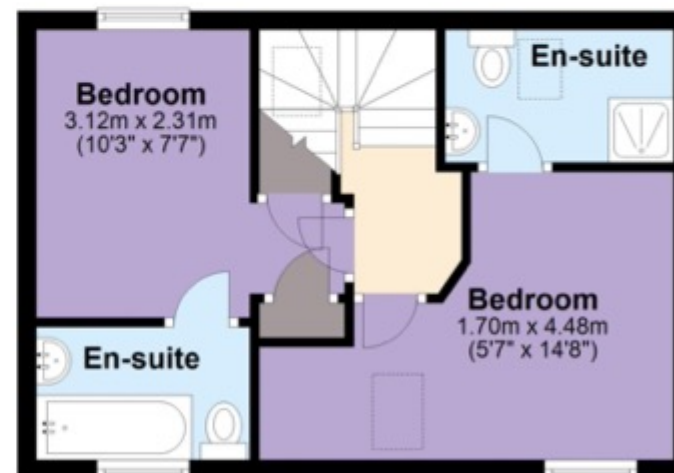
from this delightful home. The property is conveniently placed for commuting to Wolverhampton, Telford, Shrewsbury, and the wider Black Country area. Rail connections are provided at Albrighton and access to the M54 motorway J3 can be found just under 13 miles from the property, in addition to the nearby A5, A41, and A449.

**PROPERTY MISDESCRIPTIONS ACT 1991:** The Agent has not tested any apparatus, equipment, fixtures, fittings or services and as so does not verify they are in working order, fit for their purpose, or within ownership of the sellers, therefore the Buyer must assume the information given is incorrect. Neither has the Agent checked legal documentation to verify the legal status of the property or the validity of any guarantee. A buyer must assume the information is incorrect, until verified by their own Solicitors. The sale particulars may change in the course of time and any interested party is advised to make a final inspection of the property to exchange of contracts.

## Ground Floor



## First Floor



Total area: approx. 74.7 sq. metres (803.9 sq. feet)

Measurements are approximate. Not to scale. Illustrative purposes only.  
Plan produced using PlanUp.

## 6 Tudor Court

**EPC** - The EPC is attached to these particulars. If it has become detached or is lost, please contact us for a further copy.

**Fixtures and Fittings** - All carpets and curtains are excluded from the sale but may be available by separate negotiation.

**peterjames**  
PROPERTY

2 High Street, Tettenhall, WV6 8QT  
Tel: 01902 754777

Email: [sales@peterjamesproperty.com](mailto:sales@peterjamesproperty.com)  
[www.peterjamesproperty.com](http://www.peterjamesproperty.com)