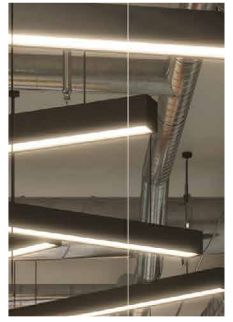


RUNWAY



Brighton

EAST

York & Elder Works, 50 New England St, Brighton, BN1 4AW

HI THERE.

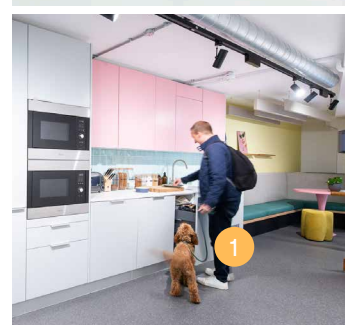
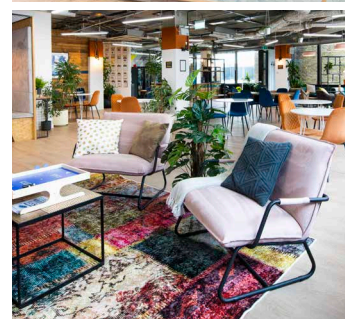
Fighting boring offices since 2014.

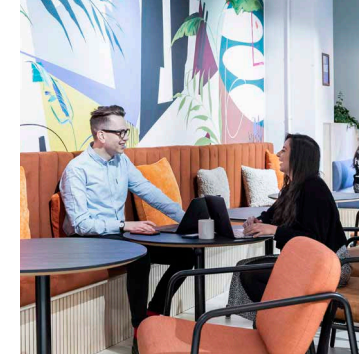
We're relentless when it comes to making our teams happy. Can't stop, won't stop. That's why over 3,500 ambitious members across the country love us.

Customised private offices, flexible coworking spaces and everything in between — all sorted for you with zero faff.

Limber up at Run Club. Delight in dogs on demand. Go nuts on Cake Wednesday. Don't organise any of it. Bliss.

Runway East Brighton





WHAT WE DO



Team Bliss

We create countless moments to make your team happy all day, every day. Enjoy an unrivalled collection of team perks and events to boost your careers page — all sorted by our on-site dream team.



Space to Scale

Bask in beautiful, customisable office space, where stuff gets fixed by people who care. All under membership plans as flexible as I'm a Celebrity's definition of celebrity. Plus no hidden fees down under. For teams of all sizes from 1-70.



Big Desk Energy

Join other startups, agencies and growing companies in a forward-thinking community that cares about its impact. Be part of something bigger, supported by a growing team (...us) that feels the same. We're big advocates for green energy and greener rewards (like the living wage).



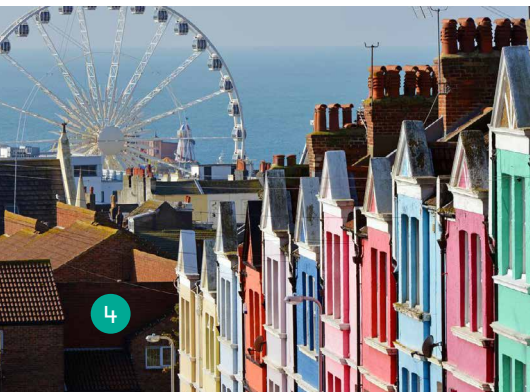


WHERE WE ARE



You'll be less than 5 minutes from Brighton station and 70 minutes from Central London.

With just 10 minutes to North Laine, you're spoilt for choice on every lunch break.



WHAT'S HERE

When you step through the door, you'll have a cold drink in one hand and a puppy in the other.



Easy transport

Just five minutes from Brighton station.



Free meeting rooms

A bunch of rooms and phone booths for meetings (or karaoke).



Funky office add-ons

Neon sign? Ball pit? In-office espresso? Drinks fridge? You name it.



Fully serviced

All cleaning, printing and faffing included. Bliss.



On-site dream team

Local experts, champion hype team and always here for you.



Dogs on demand

Hard day? Here's a puppy at your desk. You're welcome.



Drinks trolley

Our famous Friday drinks brought to your desk. Cold. Free. Desk.



Cake Wednesdays

It's halfway through the week. Here's a tonne of cake.



Space to unwind

Acres of comfy space to relax, work, breakdance. Take your pick.



Honesty cafe

Grab a decent coffee or a cold beer. Go wild. It's for charity.



Super speedy WiFi

Not a shocker, but here it is anyway. Dedicated lines available.



Fully furnished

You bring the people, we'll bring comfy chairs and desks. It's a date.



On-site showers

Ideal for commuters (and people that like showering).



Bike storage

Have a bike? You'll love being able to put it somewhere.

MEMBERSHIPS

All our members get:

- Access to meeting rooms and phone booths
- A faff-free environment (think utilities, printing, cake)
- Membership plans as flexible as I'm a Celebrity's definition of a celebrity
- No hidden fees down under



From
£370
pp per month

Private Office

A lockable, private office

- 👥 Suitable for teams of 4-70
- 🔧 Fully serviced
- 🪑 Fully furnished with desks and chairs
- 🎁 All membership perks included
- 📅 Flexible agreements
- ⚙️ Customisation available



Price dependant
on requirements

Private Office Plus

Enhanced customisation options

- 👥 Suitable for larger teams
- 🔧 Fully serviced
- 🪑 Fully furnished with desks and chairs
- 🎁 All membership perks included
- 📅 Flexible agreements
- ⚙️ Advanced customisation options

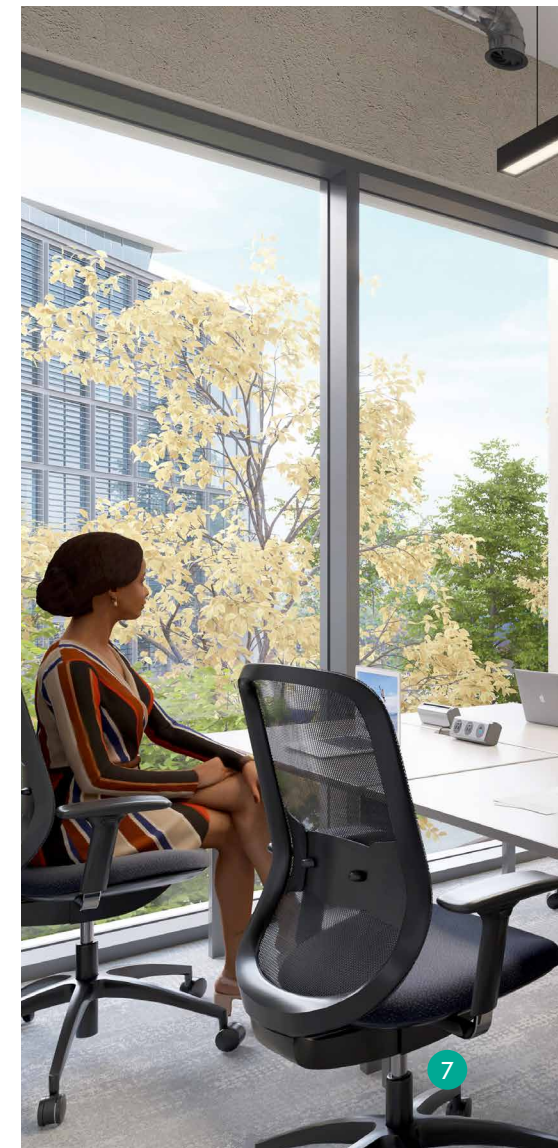


From
£390
pp per month

Dedicated Desk

A fixed desk in a shared office

- 👤 Individuals and small teams
- 🔧 Fully serviced
- 🪑 Fully furnished with desks and chairs
- 🎁 All membership perks included
- 📅 Flexible agreements



HIGHLIGHTS



NATURAL LIGHT

Enjoy the (rare) British sun on your face through enormous windows as you consider a stroll to The Levels at lunch.



ALL ACCESS PASS

Get access to all our gorgeous spaces in London & Bristol, including 2 sites 3 minutes from London Bridge station.



RUNWAY
EAST



CUSTOMISE YOUR OFFICE

From simple logos to custom murals, we've seen – and done – it all. We want your office to feel like your home.

- Lockers
- Plants
- Tech
- Branding
- Fridges
- Painting
- Furniture
- Tea Points
- Meeting Rooms
- Call Booths

Chat to our membership team about giving your space some razzle dazzle.

WORD ON THE STREET



We've tried everyone else, and we prefer us.
So do thousands of our members.

500
startups



Here's why...

"There's just something about the place that just feels right."

Duncan Cheatle
CEO & Co-Founder
Learn AMP



"It generally makes coming into work that little bit more fun."

SR2



"The staff are incredibly supportive, they're so friendly."

PerformanceIN



"Really pleased that we moved here. Highly recommended."

Kate Boulton
General Manager
Unbound



"We couldn't be happier with our choice."

Marcus Exall
Director
Monese



"Runway massively amplifies your company culture."

Tom Woollard
CEO & Co-Founder
Bunk



"It's completely revolutionised our business. It's given us the room to grow. It's all been such an incredible experience."

Tom
Director
Lumenate



"The most social place I've ever worked."

Paul Wiseall
Co-Founder
Death.io



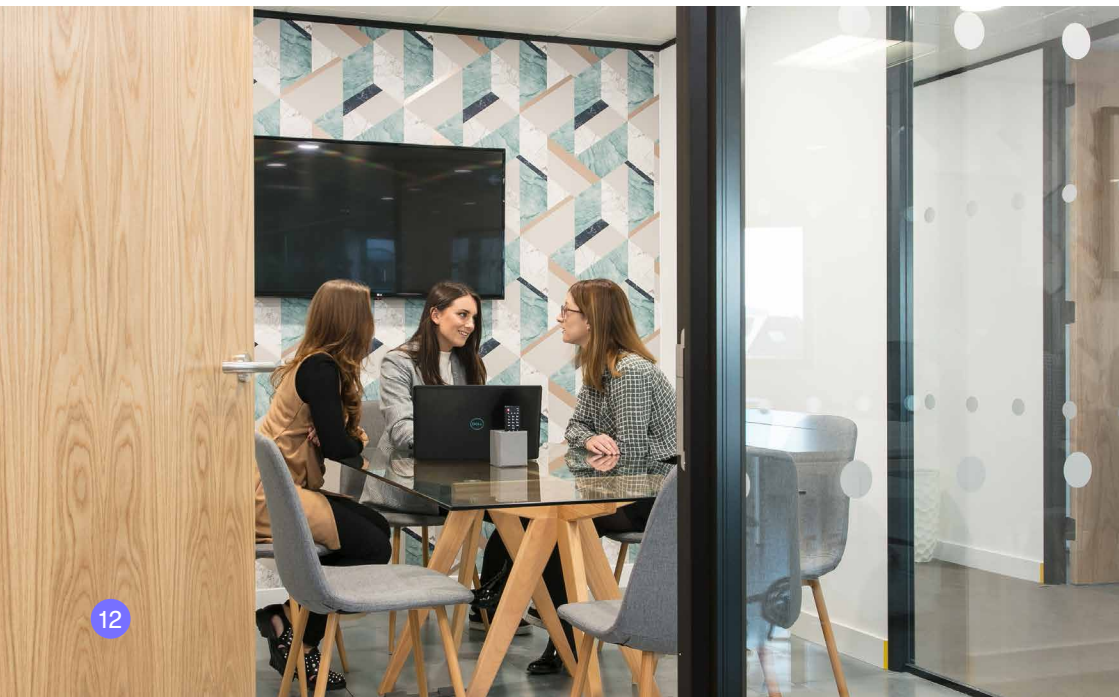
"Runway East is our spiritual (and actual) home."

Joe Cripps
Managing Director
Trail



"Runway East is the best place to scale a business."

Gareth Williams
Founder
YellowDog



FAQS

The Building

Can Runway East accommodate technical requests like on-site servers?

Yes, Runway East can accommodate a wide variety of technical requests including secure on-site servers, though there may be additional fees.

How many other people will be in the building?

There's space for over 500 members.

Do you host events?

Yes, we host a bunch of events, all sorted by our on-site dream team. And when we say events, we don't mean awkward networking sipping on warm drinks. We mean tense team quizzes, mouth-watering cooking demonstrations, sing-your-heart-out karaoke and so much more.

Am I allowed as many people as I want in my office?

Each office comes with a capacity restriction, sadly. But you're welcome to have as many guests in as you like.

Your Membership

How flexible is flexible?

Standard pricing for private offices is based on a 12-month term. We offer lots of flexible options on longer terms, too.

Are there any hidden fees we should be aware of?

All options come fully furnished with desks and chairs and fully serviced; all broadband, utilities, printing, tea, (decent) coffee, water etc are included in your price. The only additional fees would be if you requested that we customised your office with breakout furniture, branding etc, or if you went over the very generous meeting room coins.

What are the membership criteria?

Any business can join, but we do make sure that they're aligned with the casual and relaxed atmosphere of our sites. Very formal, quiet businesses may not find us best suited to their needs!

The Area

How easy will it be for my team to get to work?

We're a 5-minute walk from Brighton station and less than 10 minutes from London Road station. Central London is just 70 minutes away and there are also 3 bus stops within a 3-minute walk of the building.

Where can I keep fit?

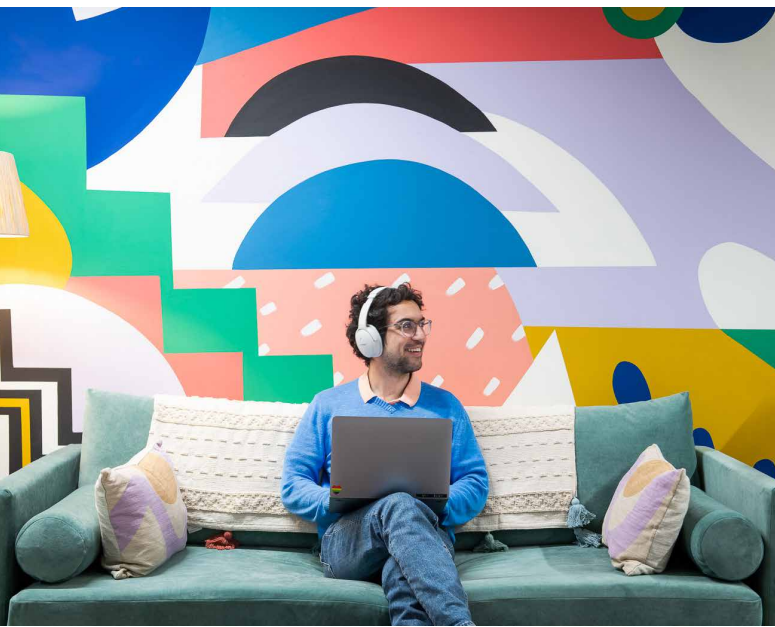
Fitness Hub and Total Fit are a 30-second walk away. Plus SPACE Yoga, The Gym Group and PureGym are within about 5 minutes of the building.

And how about places nearby for team outings?

If you're treating the team to a bite to eat then we love a bit of Fatto A Mano for pizza, Tinto Taperia for tapas and if we're craving Indian food then it's got to be Chilli Pickle. Need help organising an epic team event? We're pretty good at it.

Any recommendations for client meetings?

We have 18 meeting rooms of all sizes that could help. Want fancy catering to impress? We'll bring it to your room. But if it's off-site you're after, Flour Pot Bakery and Small Batch are great for a meeting over coffee.



SOLD?