



Carters Road, Epsom

Guide Price **£550,000**



Carters Road

Epsom

Charming 2-bed semi-detached house in sought-after location. Fully renovated with open-plan layout, modern kitchen, luxury bathroom, south-facing garden, garden room. Close to town centre & Epsom Downs. Ideal for commuters. Viewing highly recommended! Council Tax band: D

Tenure: Freehold

EPC Energy Efficiency Rating: C

EPC Environmental Impact Rating: G

- Beautifully Presented
- Character Cottage
- Fully Renovated
- Open Plan Living
- Contemporary Kitchen
- Modern Bathroom
- South Facing Garden
- Garden Room
- Close To Town Centre & Station
- Short Walk To Famous Epsom Downs



Nestled in a sought-after private cul-de-sac location, this charming 2-bedroom semi-detached house exudes character and style.

Boasting a beautifully presented interior, this character cottage has been fully renovated to a high standard, offering a blend of traditional charm and modern elegance. The open plan living area is ideal for entertaining guests, seamlessly flowing into the contemporary kitchen fitted with sleek appliances. On the first floor are two generous bedrooms and a modern bathroom, providing a tranquil retreat, perfect for relaxation after a long day.

Step outside the rear to discover the south-facing courtyard garden offering a serene oasis from the hustle and bustle of every-day life. Whilst to the front a landscaped garden provides a fabulous area to relax and unwind or host gatherings with friends and family. In addition a 6m x 4m garden room with heating, power, WIFI and Sky offers versatile options to suit your lifestyle needs.

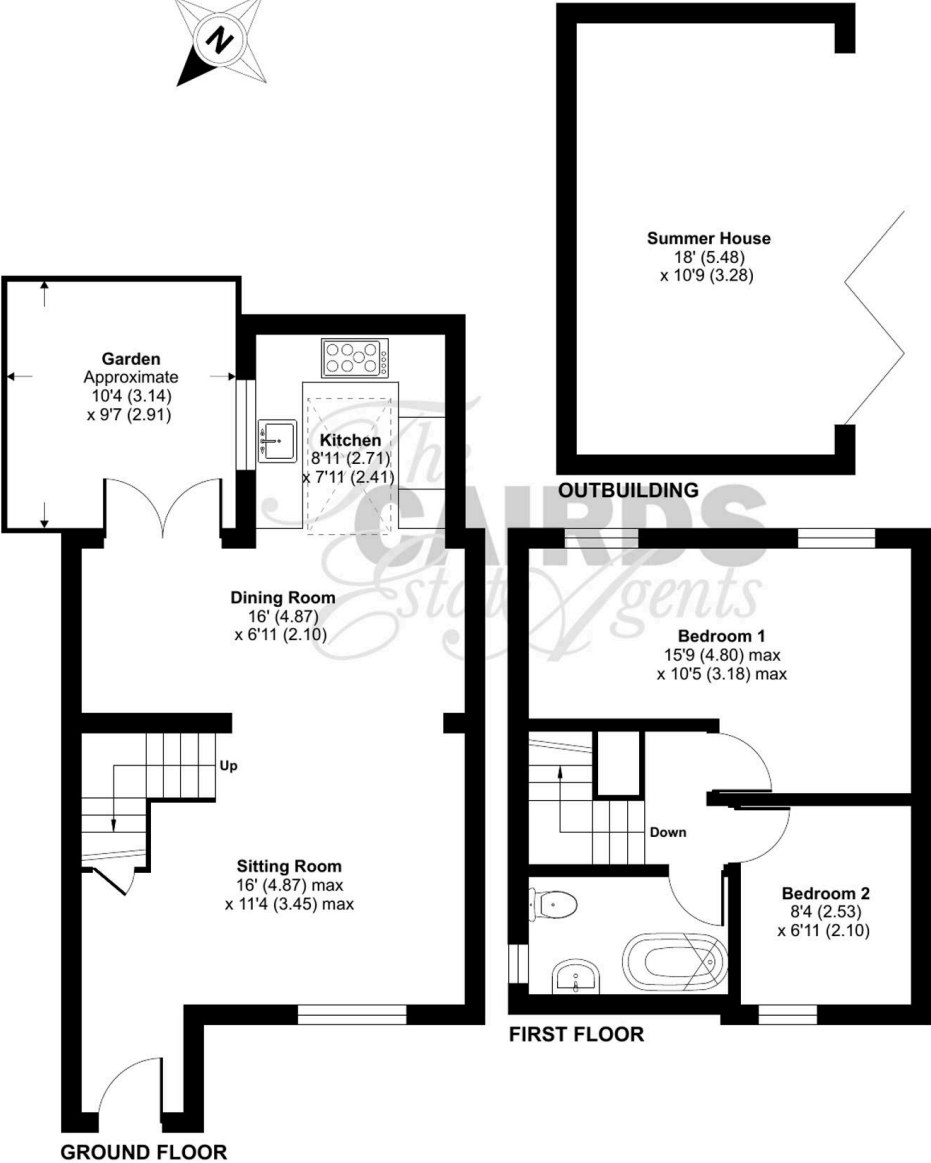
Further enhancing the property is the new Indian Sandstone driveway providing the added convenience of off street parking for residents and visitors alike.

Situated close to the town centre and train station and within a short walk from the famous Epsom Downs, makes this property a true gem in a prime location.

Do not miss out on the opportunity to make this stunning property your own – call us today to arrange your viewing!

Carters Road, Epsom, KT17

Approximate Area = 694 sq ft / 64.4 sq m
Garage = 193 sq ft / 17.9 sq m
Total = 887 sq ft / 82.3 sq m
For identification only - Not to scale







Cairds The Estate Agents

Cairds The Estate Agents, 128-130 High Street - KT19 8BT

01372 743033 • homes@cairds.co.uk • www.cairds.co.uk