



Ebbisham Road, Epsom

Guide Price **£635,000**





## Ebbisham Road

Epsom

Spacious four-bedroom terraced home in a sought-after area with modern kitchen, two bathrooms, large garden and off-street parking with EV charger. Easy access to excellent schools, town centre, and station. Call today to view!

Council Tax band: D

Tenure: Freehold

EPC Energy Efficiency Rating: C

EPC Environmental Impact Rating: D

- Spacious Mid Terrace
- Catchment For Excellent Schools
- Four Bedrooms
- Large Through Reception
- Contemporary Kitchen
- Utility
- Modern Bathroom & Separate Ground Floor Shower Room
- Good Sized Garden With Raised Terrace
- Off Street Parking With EV Charging Point
- Easy Reach of Town Centre & Station



This impressive four-bedroom terraced home offers generous and versatile accommodation, making it an ideal choice for families seeking both comfort and convenience.

Located within a sought-after residential area and falling within the catchment of highly regarded schools, the property features a spacious mid-terrace layout. A large through reception room provides excellent space for both living and dining, while the contemporary kitchen is fitted with modern units and ample work surfaces. A separate utility area adds valuable practicality to everyday living. To the upper floors are four well-proportioned bedrooms, offering flexible accommodation for family members or guests, complemented by a modern family bathroom. An additional ground floor shower room further enhances convenience for busy households.

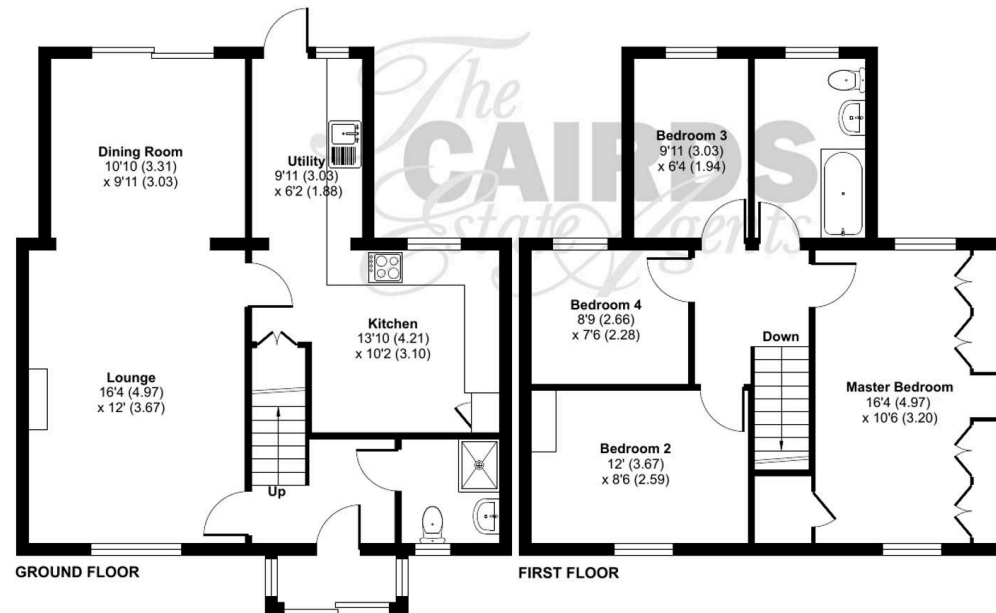
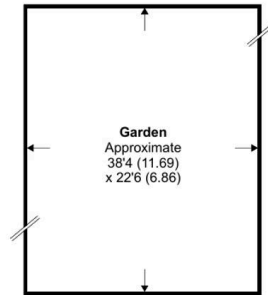
The rear garden is a particular highlight, offering a generous outdoor space with a raised terrace and large patio area, ideal for al fresco dining and entertaining during the warmer months. To the front, the property benefits from off-street parking for two vehicles with electric car charging point.

Ideally positioned within easy reach of the town centre and mainline station, this home is perfectly suited to commuters and those who appreciate convenient access to local amenities. Contact Cairds today to arrange your viewing.

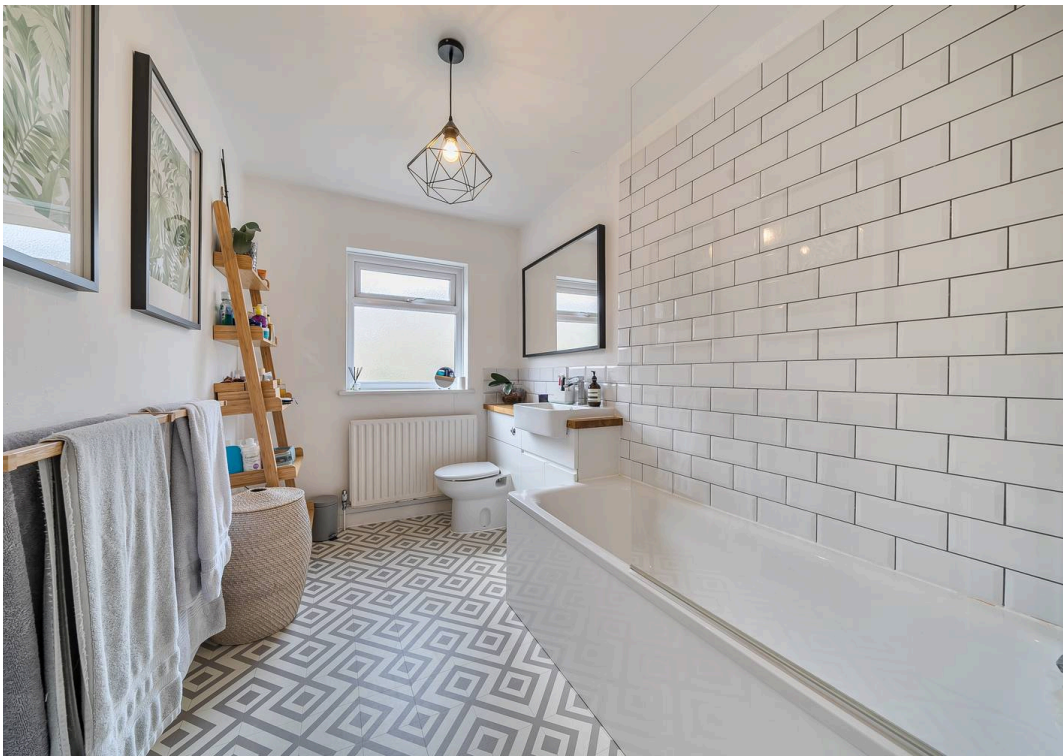
# Ebbisham Road, Epsom, KT18

Approximate Area = 1195 sq ft / 111 sq

For identification only - Not to scale











## Cairds The Estate Agents

Cairds The Estate Agents, 128-130 High Street - KT19 8BT

01372 743033 • [homes@cairds.co.uk](mailto:homes@cairds.co.uk) • [www.cairds.co.uk](http://www.cairds.co.uk)