



Treadwell Road, Epsom

Guide Price £560,000



Treadwell Road

Epsom

Charming Victorian semi-detached in College Area with versatile living spaces, 2/3 Receptions, 2/3 bedrooms, south-facing garden. Near amenities and Epsom Downs. No onward chain. Ideal home for comfort and convenience.

Council Tax band: TBD

Tenure: Freehold

EPC Energy Efficiency Rating: F

EPC Environmental Impact Rating: F

- No Onward Chain
- Sought After College Area
- Extended Victorian Semi
- Versatile Accommodation
- Two/Three Receptions
- Two/Three Bedrooms
- First Floor Bathroom
- South Facing Rear Garden
- Close to Town Centre & Station
- Easy Reach of Fabulous Epsom Downs



Situated in the sought-after College Area, this extended Victorian semi-detached home boasts versatile accommodation and is available with no onward chain, making it an attractive option for those ready to make a swift and uncomplicated move.

Upon entering the property, you are greeted by a well-appointed interior featuring three reception rooms, offering ample space for living and dining areas or the flexibility to create a study or additional bedroom according to individual needs. Upstairs, the property offers two generously proportioned bedrooms, providing comfortable sleeping quarters for residents and guests alike. The first floor bathroom ensures convenience and privacy for occupants, adding to the functional layout of the home.

Outside, the south-facing rear garden, offers a delightful space providing those with green fingers plenty of opportunities to cultivate their own oasis in this charming setting.

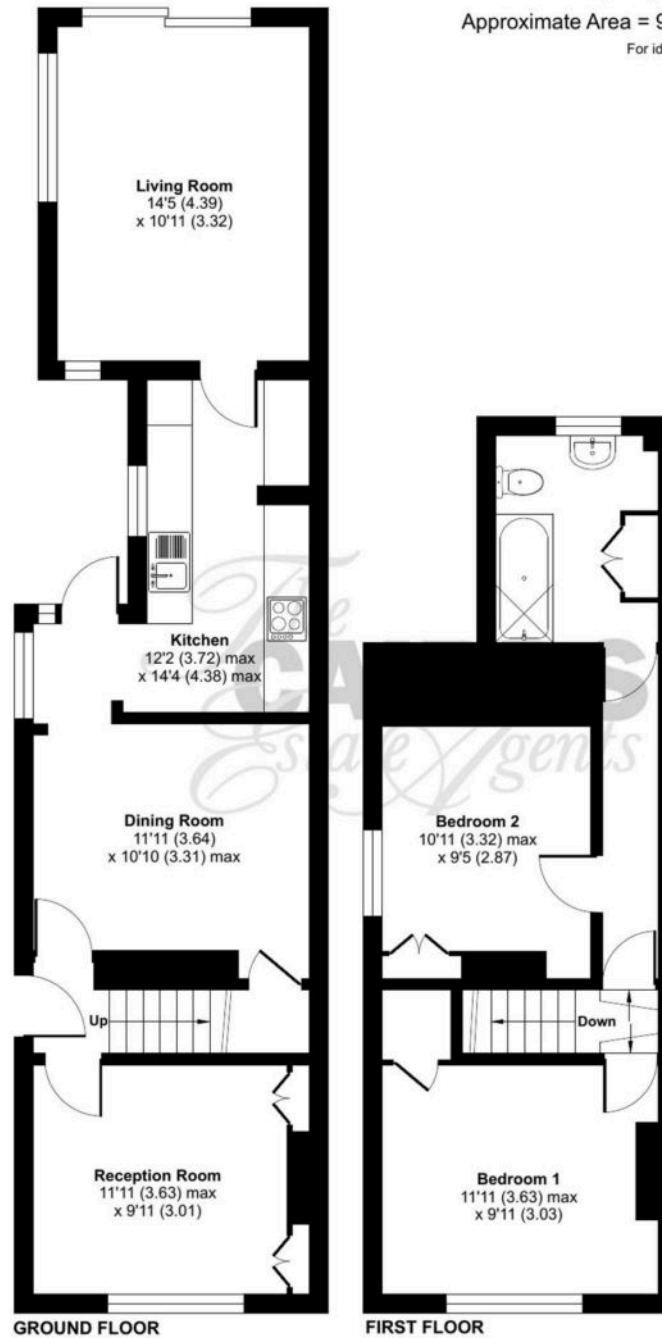
Conveniently located near the town centre and train station, residents of this property will benefit from easy access to a range of amenities, including shops, restaurants, and transport links. The property also affords close proximity to the fabulous Epsom Downs, offering residents the chance to enjoy leisurely walks, picnics, or horse racing activities in this scenic area.

In summary, this property presents a rare opportunity to acquire a well-located home in the desirable College Area. This property is sure to appeal to a wide range of buyers seeking comfort, convenience, and character in their next home. Don't miss out on the chance to make this property your own and enjoy all the benefits of living in this vibrant and sought-after neighbourhood.

Treadwell Road, Epsom, KT18

Approximate Area = 960 sq ft / 89.1 sq m

For identification only - Not to scale







Cairds The Estate Agents

Cairds The Estate Agents, 128-130 High Street - KT19 8BT

01372 743033 • homes@cairds.co.uk • www.cairds.co.uk