



Flat 1, Rowan Mead Henbit Close, Tadworth
Tadworth

Guide Price **£190,000**



Flat 1

Rowan Mead Henbit Close, Tadworth

This modern ground floor retirement property in a tranquil cul-de-sac setting is ideal for over 60s. Featuring a well-maintained one-bedroom flat, a welcoming patio, ample parking, communal gardens, and a peaceful atmosphere. Ready to move in with no chain. Council Tax band: C

Tenure: Leasehold

EPC Energy Efficiency Rating: C

EPC Environmental Impact Rating: E

- One Bedroom Retirement Flat
- Ground Floor
- Direct Access to Patio
- Parking and Visitor Parking
- Modern Condition
- Over 60's
- Communal Gardens
- Private Cul du Sac

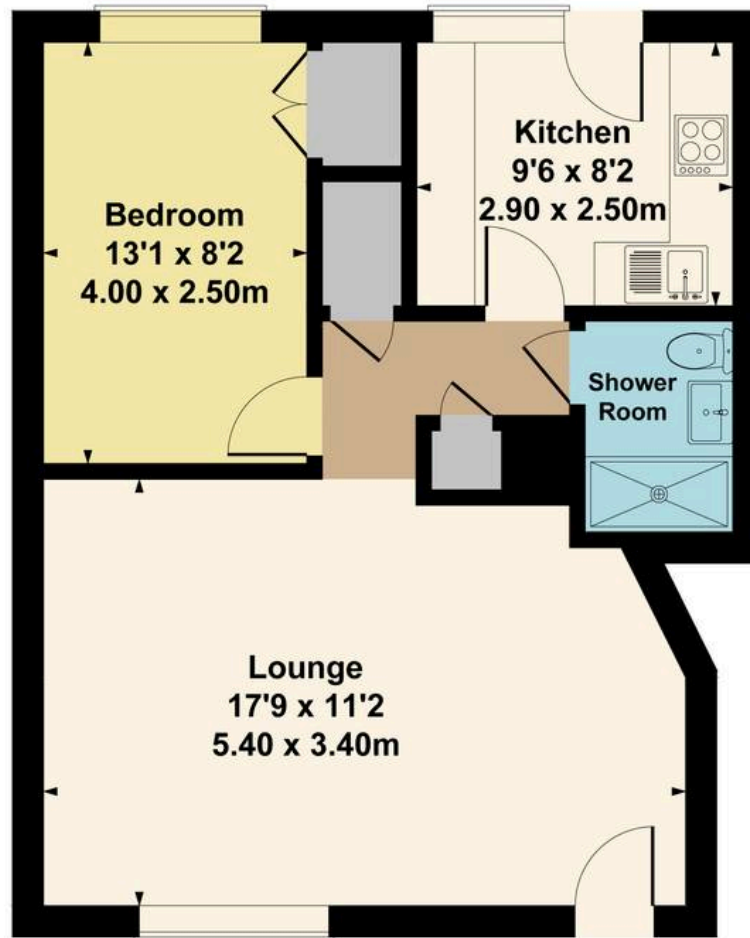


You can include any text here. The text can be modified upon generating your brochure.

You can include any text here. The text can be modified upon generating your brochure.

Approximate Gross Internal Area

51.6 sq. m. (555 sq. ft.)



Floor Area 51.6 sq.m. (555 sq.ft.) approx

Not to scale, for layout reference only. All measurements are approximate.
Produced by As Built Energy Surveys for Cairds Estate Agnets.





Cairds The Estate Agents

Cairds The Estate Agents, 128-130 High Street - KT19 8BT

01372 743033 • homes@cairds.co.uk • www.cairds.co.uk