



Highridge Close, Epsom

In Excess of £800,000





## Highridge Close

Epsom

This 4-bed terraced house in the sought-after College area offers contemporary design, a modern kitchen, en-suite master bedroom, landscaped garden, garage, and off-street parking. Blend suburban tranquillity with urban convenience. Lifestyle home not to be missed! Schedule a viewing now!

Council Tax band: F

Tenure: Freehold

EPC Energy Efficiency Rating: C

EPC Environmental Impact Rating: C

- Sought After College area
- Cul-De-Sac Location
- Spacious Reception
- Modern Kitchen/Breakfast Room
- Four Bedrooms - New Fitted Wardrobes/Storage
- En-Suite Bathroom To Master
- Family Bathroom
- Landscaped Garden & Terrace
- Garage & Off Street Parking
- Easy Reach of Town Centre & Station

Introducing this exceptional 4-bedroom terraced house, perfectly positioned in the sought-after College area. Tucked away in a peaceful cul-de-sac, it offers the ideal balance of privacy and convenience.

Step inside to a welcoming reception area that sets the tone for the home's contemporary design. The modern kitchen is a culinary haven, ready to inspire your gastronomic creations, while the well-planned layout ensures effortless everyday living.

Upstairs, four generously proportioned bedrooms include a master with en-suite, providing both comfort and practicality. A family bathroom serves the remaining bedrooms, whilst a ground floor W.C adds convenience, catering to the needs of a busy household.

Outside, a beautifully landscaped garden in a Sylvan setting creates a serene retreat—perfect for morning coffee, alfresco dining, or entertaining guests. Additional benefits include a garage and off-street parking, enhancing accessibility for homeowners and visitors alike. With the town centre and station within easy reach, this home delivers the perfect fusion of suburban tranquillity and urban convenience.

This property offers more than just a place to live—it's a lifestyle, combining comfort, style, and sophistication at every turn.

Call us today to schedule your viewing!

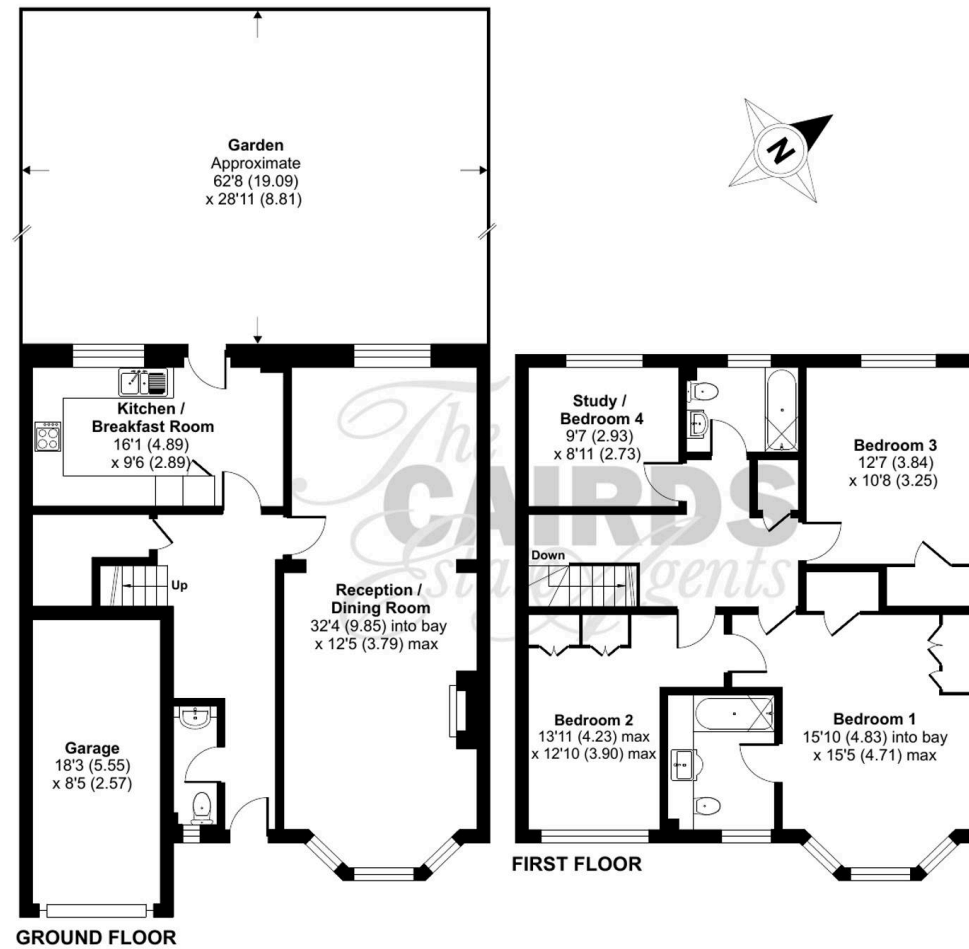
# Highridge Close, Epsom, KT18

Approximate Area = 1590 sq ft / 147.7 sq m

Garage = 149 sq ft / 13.8 sq m

Total = 1739 sq ft / 161.5 sq m

For identification only - Not to scale











## Cairds The Estate Agents

Cairds The Estate Agents, 128-130 High Street - KT19 8BT

01372 743033 • [homes@cairds.co.uk](mailto:homes@cairds.co.uk) • [www.cairds.co.uk](http://www.cairds.co.uk)