



Church Close, Church Street, Epsom

Guide Price £425,000



Church Close, Church Street

Epsom

* Chain Free * 3-bedroom first-floor flat in vibrant town centre. Spacious reception area, well-appointed kitchen, allocated parking, communal garden. Close to amenities and transport links. Call now to view!

Council Tax band: D

Tenure: Leasehold

EPC Energy Efficiency Rating: C

EPC Environmental Impact Rating: C

- No Onward Chain
- First Floor
- Convenient Town Centre Location
- Three Bedrooms
- Spacious Reception
- Well Appointed Kitchen
- Bathroom
- Separate W.C.
- Allocated Parking
- Short Walk To Station



Nestled in a vibrant town centre, this spacious first-floor flat presents an ideal opportunity for urban living. With no onward chain, this property offers three generously proportioned bedrooms, a spacious reception area with feature bay window, a well-appointed kitchen, a bathroom, and a separate W.C.

Step outside to discover a well-maintained communal garden that offers residents a perfect space to relax and unwind, whilst the convenience of an allocated parking space caters to modern lifestyle demands.

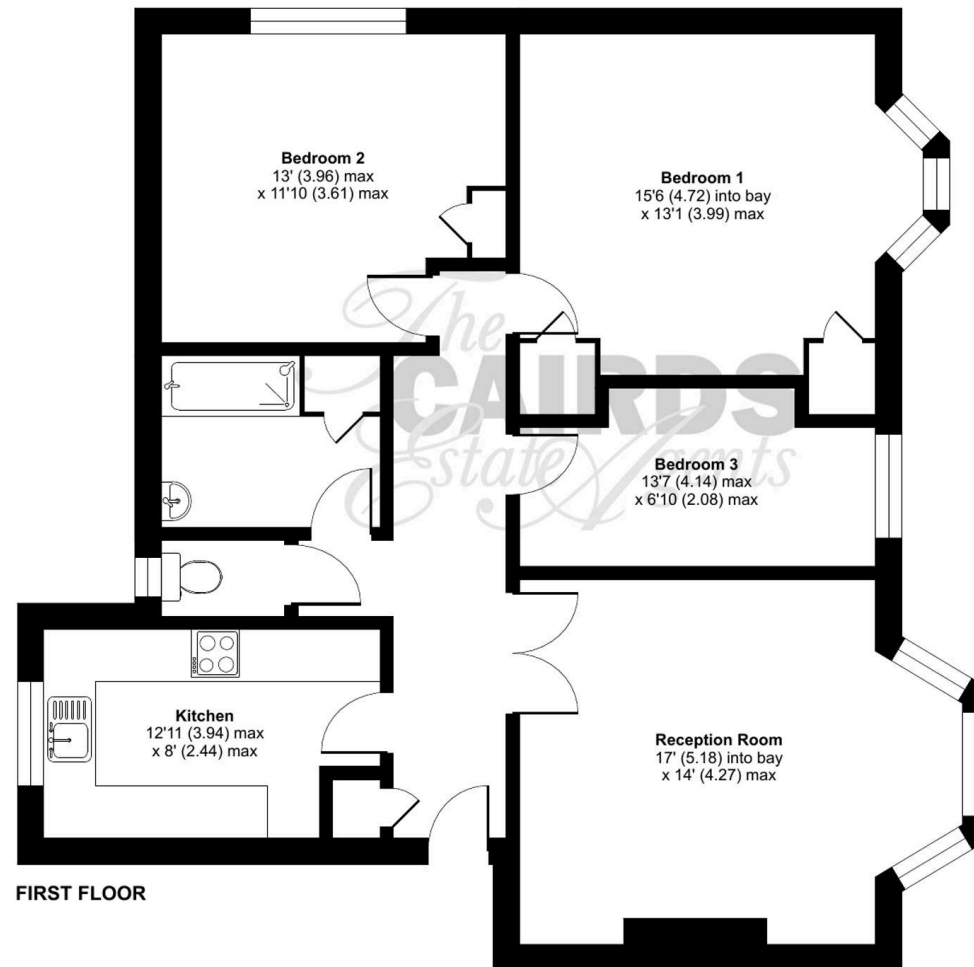
Just a short walk from the town centre with its plethora of shops, restaurants and leisure facilities together with the mainline station, this residence provides a perfect blend of comfort and functionality, ensuring easy access to excellent transport links to London and the surrounding area.

Embrace the charm of this residence and relish the balance of urban convenience – call us today to schedule your viewing!

Church Close, Epsom, KT19

Approximate Area = 967 sq ft / 89.8 sq

For identification only - Not to scale







Cairds The Estate Agents

Cairds The Estate Agents, 128-130 High Street - KT19 8BT

01372 743033 • homes@cairds.co.uk • www.cairds.co.uk