



Manor Green Road, Epsom

Guide Price £900,000



Manor Green Road

Epsom

Charming 3-bed house in sought-after Chase Estate with immense potential. Two reception rooms, south west garden, garage, and off-street parking. Prime location near outstanding schools and town centre. Ideal for family living. Council Tax band: G

Tenure: Freehold

EPC Energy Efficiency Rating: D

EPC Environmental Impact Rating: G

- No Onward Chain
- Sought After Chase Estate
- Requiring Some Updating
- Catchment For Outstanding Schools
- Two Receptions
- Kitchen/Breakfast Room
- Utility/Snug
- Well Maintained Secluded Rear Garden
- Garage & Off Street Parking
- Ten Minute Walk to Town Centre & Station



Nestled within the sought-after Chase Estate, this charming 3-bedroom detached house presents a unique opportunity for those seeking a property with immense potential. Offered with no onward chain, this residence is situated in a prime location within the catchment area for outstanding schools.

The property, while requiring some updating, boasts two generously sized reception rooms, providing ample space for comfortable living. The kitchen/breakfast room offers a cosy setting for family meals, while the utility/snug adds a touch of versatility to this home. Upstairs are the three generously proportioned bedrooms and a spacious family bathroom.

Outside the sunny south west facing rear garden offers a peaceful retreat, perfect for relaxing and entertaining. Additionally, this property features a garage and off-street parking, ensuring convenience for residents.

Located just a ten-minute walk from the town centre and station, this residence also benefits from its proximity to Epsom Common, providing a balance of suburban tranquillity and urban amenities for its inhabitants.

Do not miss the opportunity to make this fabulous property your own – call us today to book your appointment!

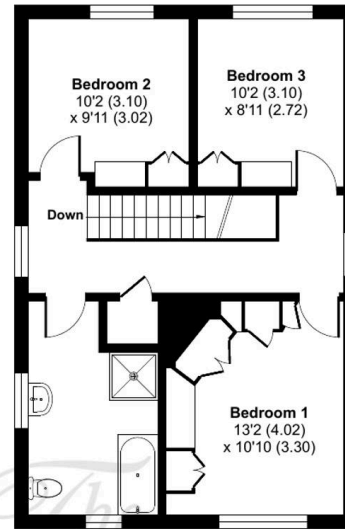
Manor Green Road, Epsom, KT19

Approximate Area = 1425 sq ft / 132.3 sq m

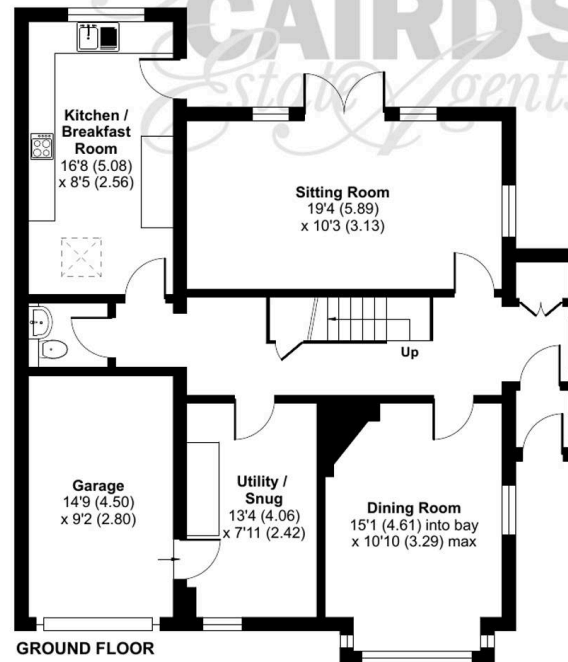
Garage = 131 sq ft / 12.1 sq m

Total = 1556 sq ft / 144.4 sq m

For identification only - Not to scale



FIRST FLOOR



GROUND FLOOR







Cairds The Estate Agents

Cairds The Estate Agents, 128-130 High Street - KT19 8BT

01372 743033 • homes@cairds.co.uk • www.cairds.co.uk