



Mount Pleasant, Epsom

Guide Price **£775,000**



12 Mount Pleasant

Epsom

Impressive 4-bed chalet bungalow with extended layout, modern kitchen/diner, cosy family room, peaceful rear garden, detached garage, off-street parking. Close to amenities and excellent schools.

Council Tax band: D

Tenure: Freehold

EPC Energy Efficiency Rating: D

EPC Environmental Impact Rating: G

- Chalet Bungalow
- Spacious Kitchen/Diner With Underfloor Heating
- Family Room
- Four Bedrooms
- Two Bathrooms
- Smart Heating System
- Good Size Rear Garden With Raised Terrace
- Detached Garage & Driveway Parking
- Catchment of Excellent Schools
- Short Walk to Ewell Village & Ewell West Station



This impressive 4-bedroom semi-detached chalet bungalow offers a perfect blend of modern comfort and classic charm.

The property boasts an extended layout, featuring a spacious well-appointed kitchen/diner complete with underfloor heating and a smart heating system, ideal for hosting family gatherings. With a cosy family room, four well-appointed bedrooms, two of which are on the first floor, a convenient ground floor bathroom and a luxurious first floor shower room, this home provides ample space for all.

The outside space of this home truly enhances its appeal, offering a peaceful retreat right in the heart of the community. The well-maintained rear garden provides a tranquil setting for relaxation and recreation, while the raised terrace offers a lovely spot for enjoying al fresco dining or simply unwinding after a long day. The property also includes a detached garage and off-street parking, offering convenience for residents and visitors alike.

Situated within the catchment area of excellent schools and just a short walk away from Ewell Village and Ewell West Station, this property provides both a quiet refuge and easy access to local amenities and transportation links. Don't miss out on the opportunity to make this charming abode your own and enjoy the best of suburban living in this sought-after location.

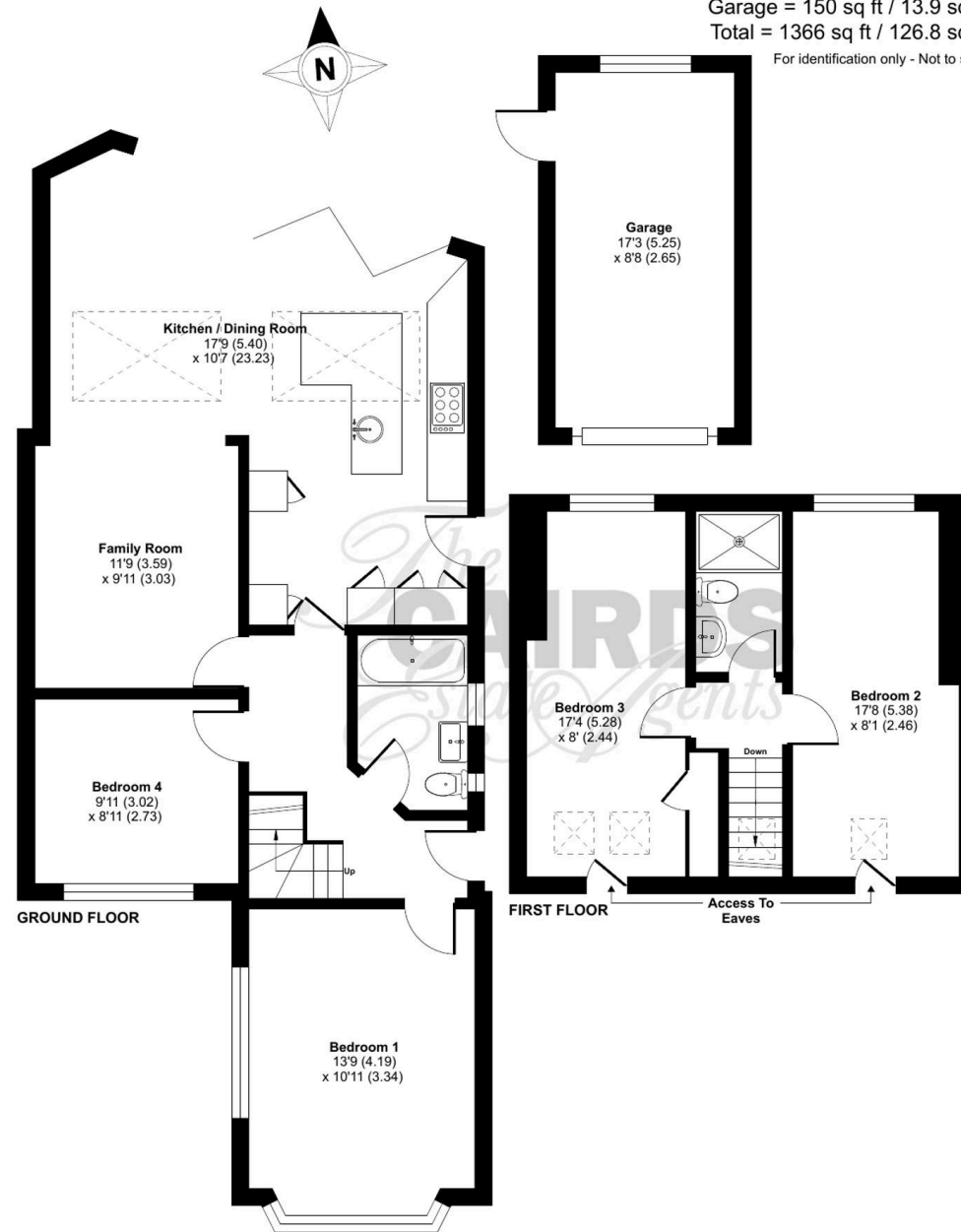
Mount Pleasant, Epsom, KT17

Approximate Area = 1216 sq ft / 112.9 sq m

Garage = 150 sq ft / 13.9 sq m

Total = 1366 sq ft / 126.8 sq m

For identification only - Not to scale







Cairds The Estate Agents

Cairds The Estate Agents, 128-130 High Street - KT19 8BT

01372 743033 • homes@cairds.co.uk • www.cairds.co.uk