



Rosebery House, 57 East Street
Epsom

Guide Price **£399,999**



Rosebery House

Epsom

Located in a prime urban spot, this stylish 2-bed flat offers modern living with a spacious living room, balcony, contemporary kitchen, en-suites, and easy access to amenities and transport links. Perfect for buyers seeking comfort and convenience in a vibrant setting.

Council Tax band: D

Tenure: Leasehold

EPC Energy Efficiency Rating: C

EPC Environmental Impact Rating: G

- Modern Apartment
- First Floor
- Large Balcony
- Spacious Living Room
- Contemporary Kitchen
- Two Generous Double Bedrooms
- Two En-Suites
- Minutes Walk To Town Centre & Station



Nestled in a sought-after location, this exceptional 2-bedroom flat offers a modern and stylish living environment ideal for contemporary urban living. Situated on the first floor of a well-maintained building, this modern apartment boasts a range of impressive features that make it a standout choice for discerning buyers.

Upon entering, you are greeted by a bright and spacious living room that seamlessly connects to a large balcony, providing a perfect spot to relax and enjoy the outdoors. The contemporary kitchen, thoughtfully designed with sleek finishes and high-end appliances, offers both functionality and style, making it a delightful space for culinary enthusiasts.

In addition the property offers two generously sized double bedrooms, each offering ample space and natural light. Both bedrooms have the added benefit of en-suites, finished to a high standard, providing added convenience for residents. A particular feature of this property is the spacious balcony offering a delightful space to relax and unwind with a cup of coffee or glass of wine.

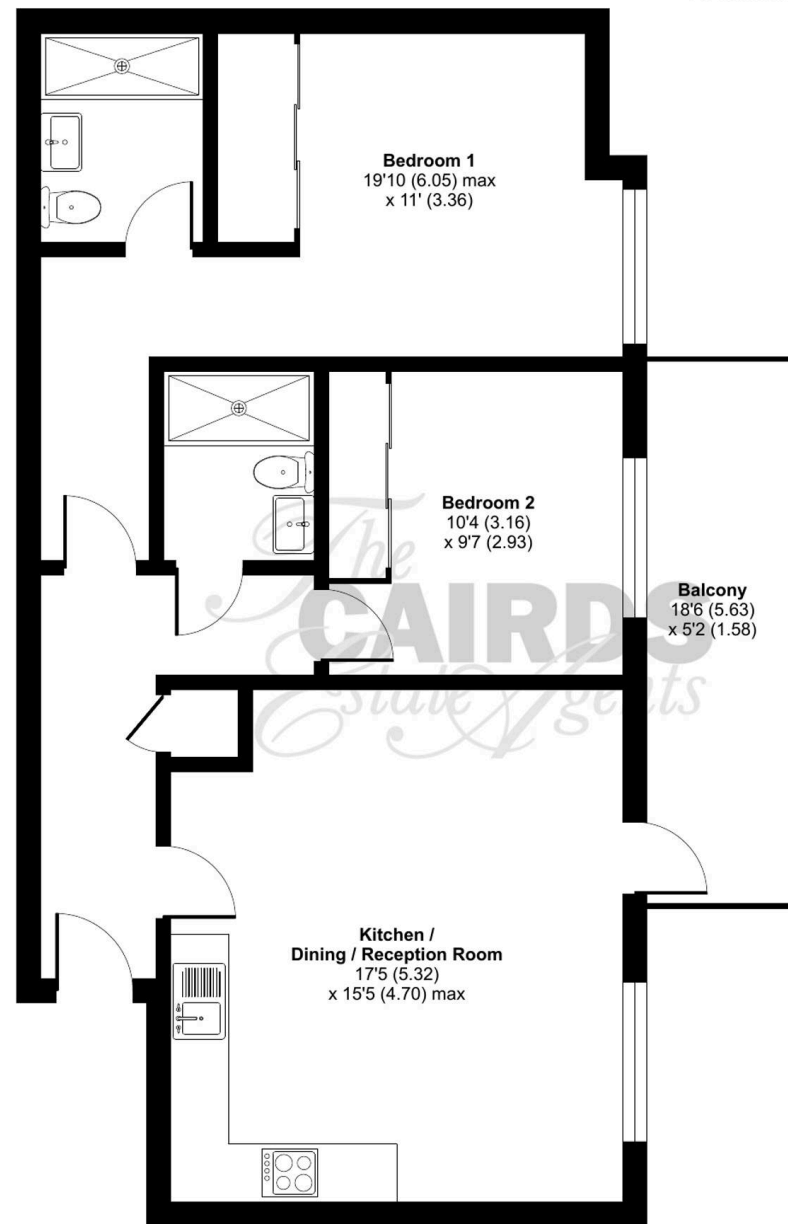
Conveniently located just minutes away from the town centre and the station, this property offers easy access to a wealth of amenities, including shops, restaurants, and public transport links. Whether you're looking to explore the local entertainment options or commute to work, this prime location ensures that everything you need is within reach.

For those seeking a comfortable and convenient lifestyle in a vibrant urban setting, this 2-bedroom flat represents an excellent choice. Whether you are a first-time buyer, a young professional, or an investor looking for a lucrative opportunity, this property offers a unique blend of luxury, location, and liveability. Don't miss the chance to make this modern apartment your own and experience the best of urban living at your doorstep.

East Street, Epsom, KT17

Approximate Area = 750 sq ft / 69.6 sq m

For identification only - Not to scale



FIRST FLOOR





Cairds The Estate Agents

Cairds The Estate Agents, 128-130 High Street - KT19 8BT

01372 743033 • homes@cairds.co.uk • www.cairds.co.uk