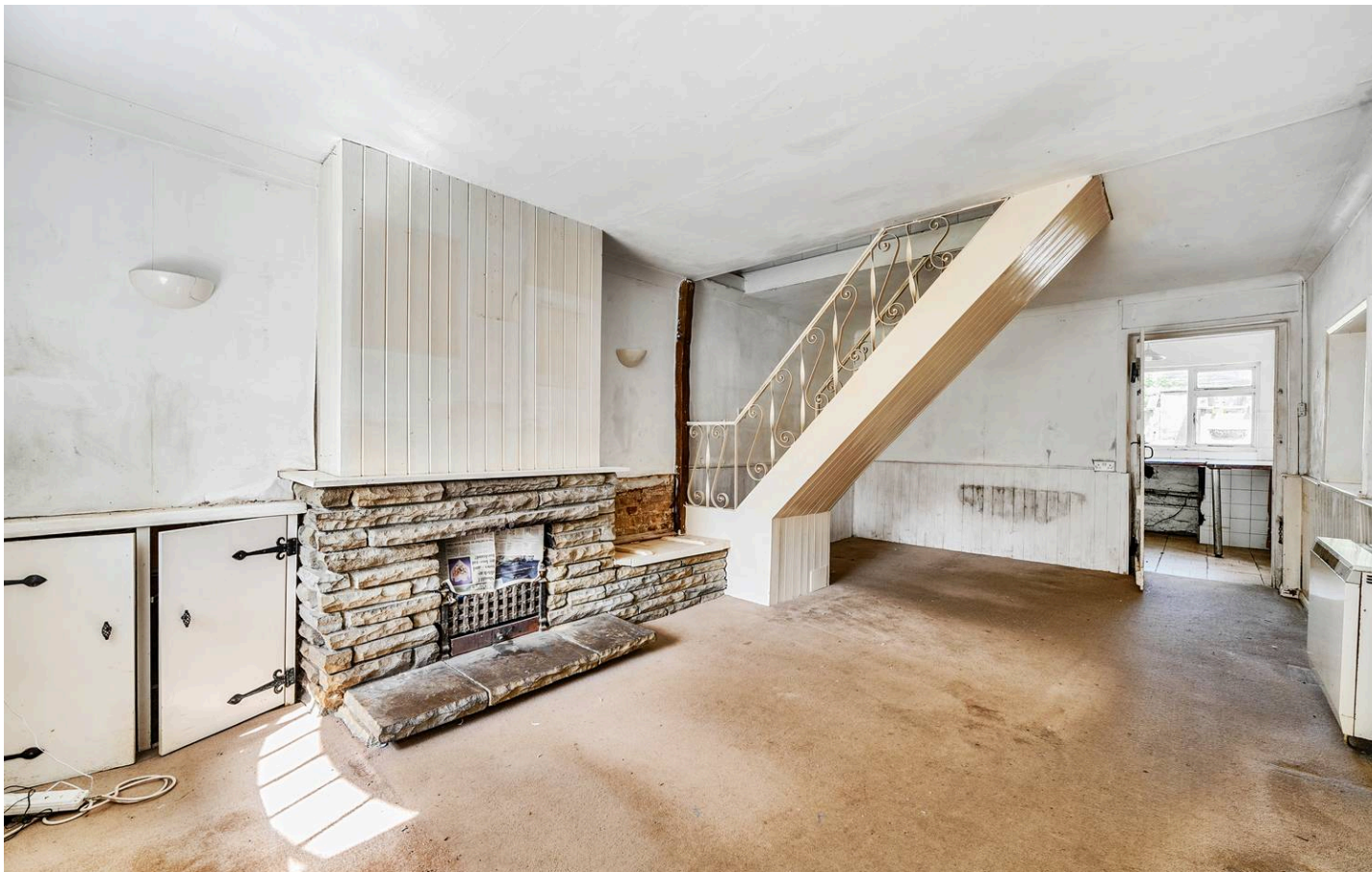




West Hill, Epsom

Prices From **£575,000**



West Hill, Epsom

Characterful semi-detached house in sought-after location with potential for modernisation. Spacious reception, 3 bedrooms, charming garden, garage, and driveway. Close to town centre and station for convenience. Ideal for personalisation and transformation. Viewing highly recommended.

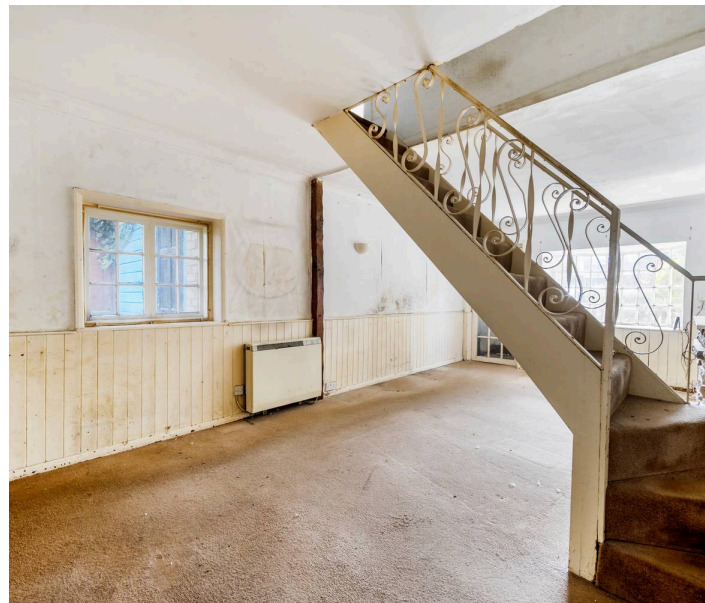
Council Tax band: E

Tenure: Freehold

EPC Energy Efficiency Rating: F

EPC Environmental Impact Rating: F

- Character Semi
- Sought After Location
- Requiring Modernisation
- Spacious Reception
- Kitchen
- Three Bedrooms
- Bathroom
- Garage & Driveway
- Close To Town Centre & Station



Nestled in a sought-after location, this characterful three-bedroom semi-detached house presents an exceptional opportunity for those seeking a home requiring modernisation.

Boasting a spacious reception area and a separate kitchen, this property offers a canvas for personalisation and enhancement. The layout includes three well-proportioned bedrooms and a bathroom, providing comfortable living spaces for a growing family. Furthermore, the property features an external covered side area and charming rear garden together with an integral garage and driveway, ensuring ample parking options for residents and guests alike.

Situated close to the vibrant town centre and the convenient station, this residence offers both tranquillity and connectivity, making it an attractive prospect for those prioritising both lifestyle and convenience.

Don't miss the chance to secure a home within a prime location primed for personalisation and transformation. Call us today to book your viewing.

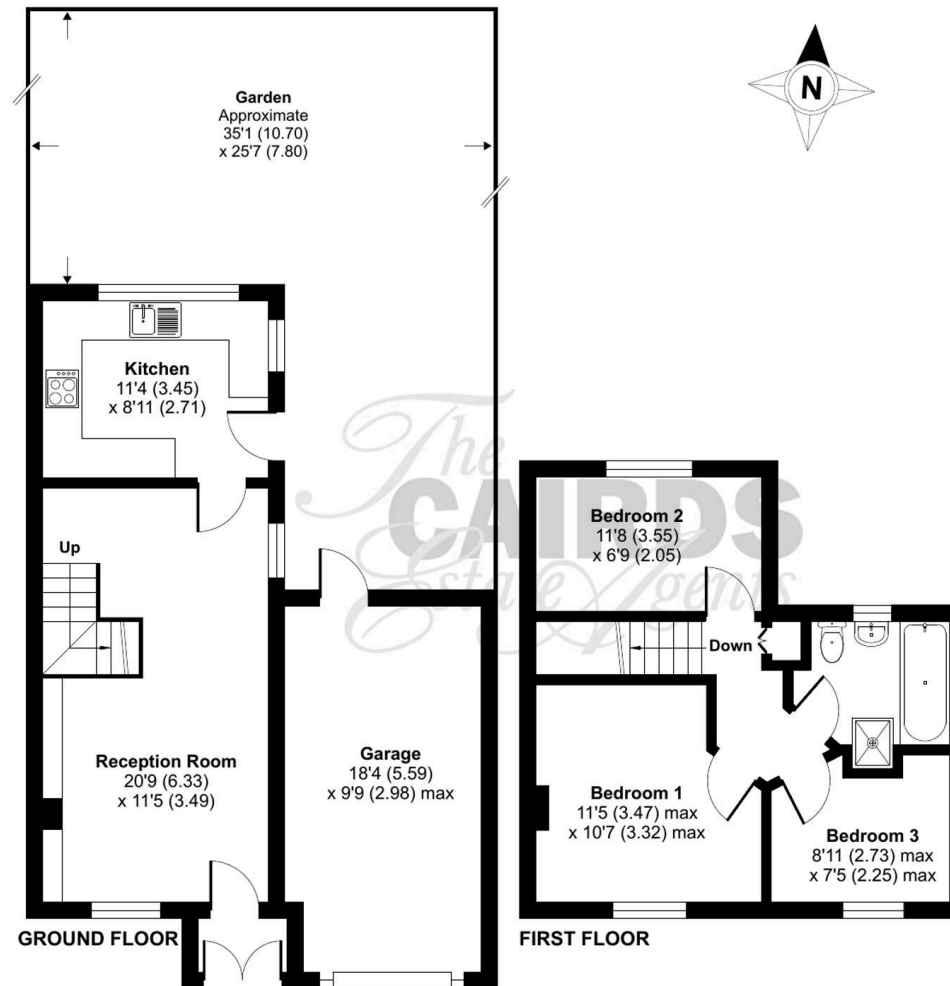
West Hill, Epsom, KT19

Approximate Area = 730 sq ft / 67.8 sq m

Garage = 177 sq ft / 16.4 sq m

Total = 907 sq ft / 84.2 sq m

For identification only - Not to scale







Cairds The Estate Agents

Cairds The Estate Agents, 128-130 High Street - KT19 8BT

01372 743033 • homes@cairds.co.uk • www.cairds.co.uk